



Park and playground directly opposite the new homes!



17B Pitt Street Paradise SA

3 2 2

- DESIGNER STYLE.
- SPACIOUS LIVING ROOMS BRIGHTENED UP WITH NATURAL LIGHT.
- GOOD SIZE BACK YARDS.
- TRANQUIL OUTDOOR UNDERCOVER ALFRESCO AREAS OVERLOOKING THE CONTEMPORARY FULLY LANDSCAPED GARDENS.
- HIGH END INTERNAL FINISHES WITH THE LOOK OF 2020.
- COMPLETION IN APPROXIMATELY FEBRUARY 2020.
- BEAUTIFUL ASPECT OVERLOOKING PITT STREET

Price : \$ 528,000

View : <https://www.bruse.com.au/sale/sa/north-north-east-suburbs/paradise/residential/house/5549524>

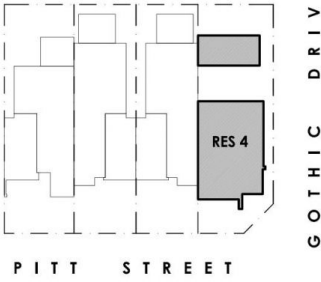


Theon Bruse
08 8431 8181

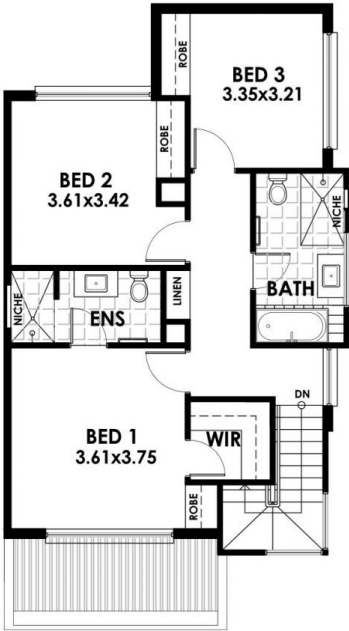
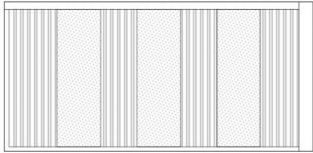


Toby Shipway
8413 8181

RESIDENCE 4	
AREAS	m ²
LOWER LIVING	67.69
UPPER LIVING	66.26
GARAGE	19.70
TOTAL	153.65
SITE AREA	179m ²



GROUND FLOOR / SITE PLAN



FIRST FLOOR PLAN





SITE PLAN
SCALE 1:200 @ A3

P I T T S T R E E T