



10A Leicester Street PARKSIDE SA

3 2 2

CRISP CLEAN MODERN DESIGN - ENJOY THE SPACIOUS OPEN PLAN AND LOW MAINTENANCE LIFESTYLE.

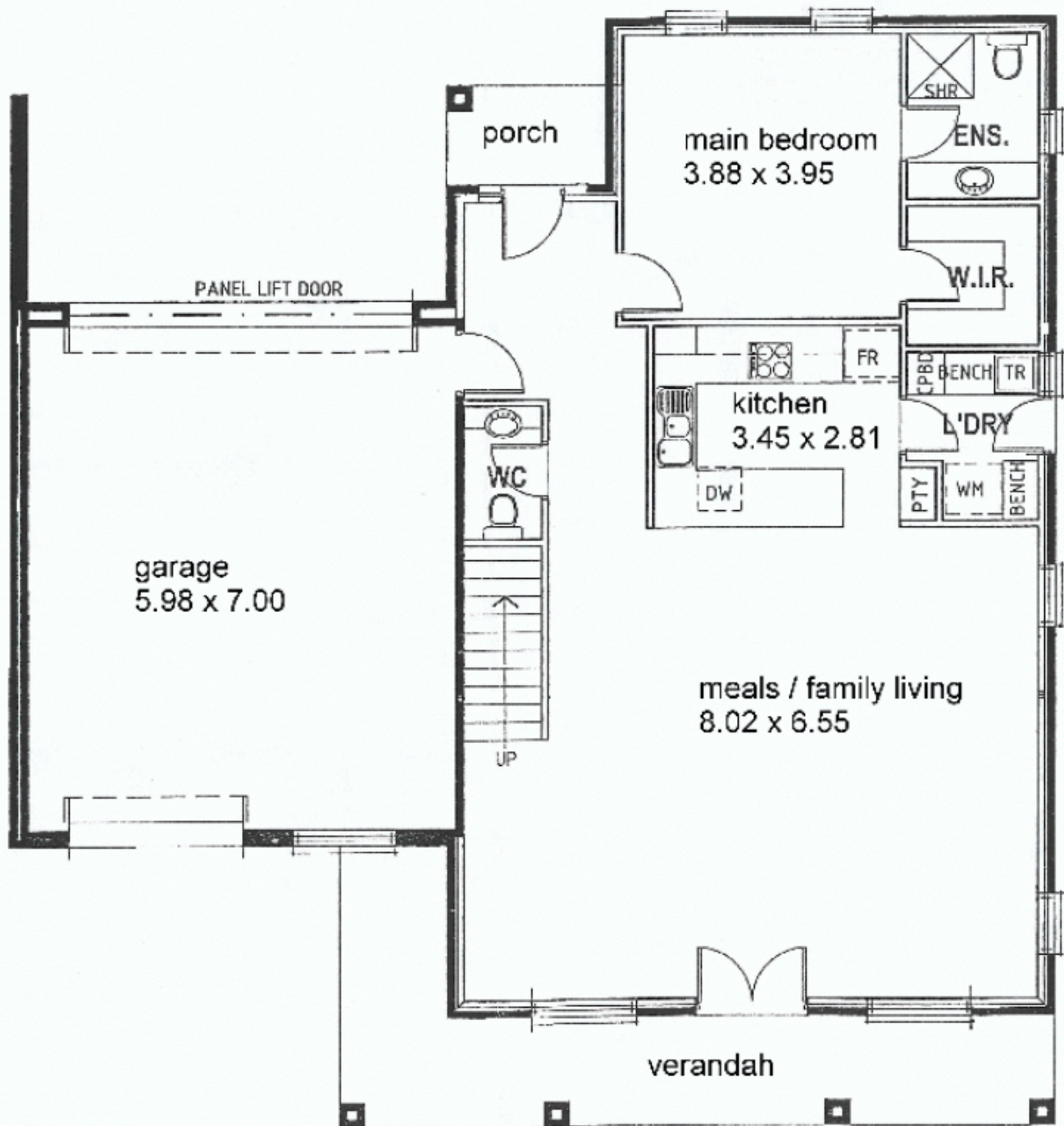
View : <https://www.bruse.com.au/sale/sa/eastern-suburbs/parkside/residential/house/5550379>

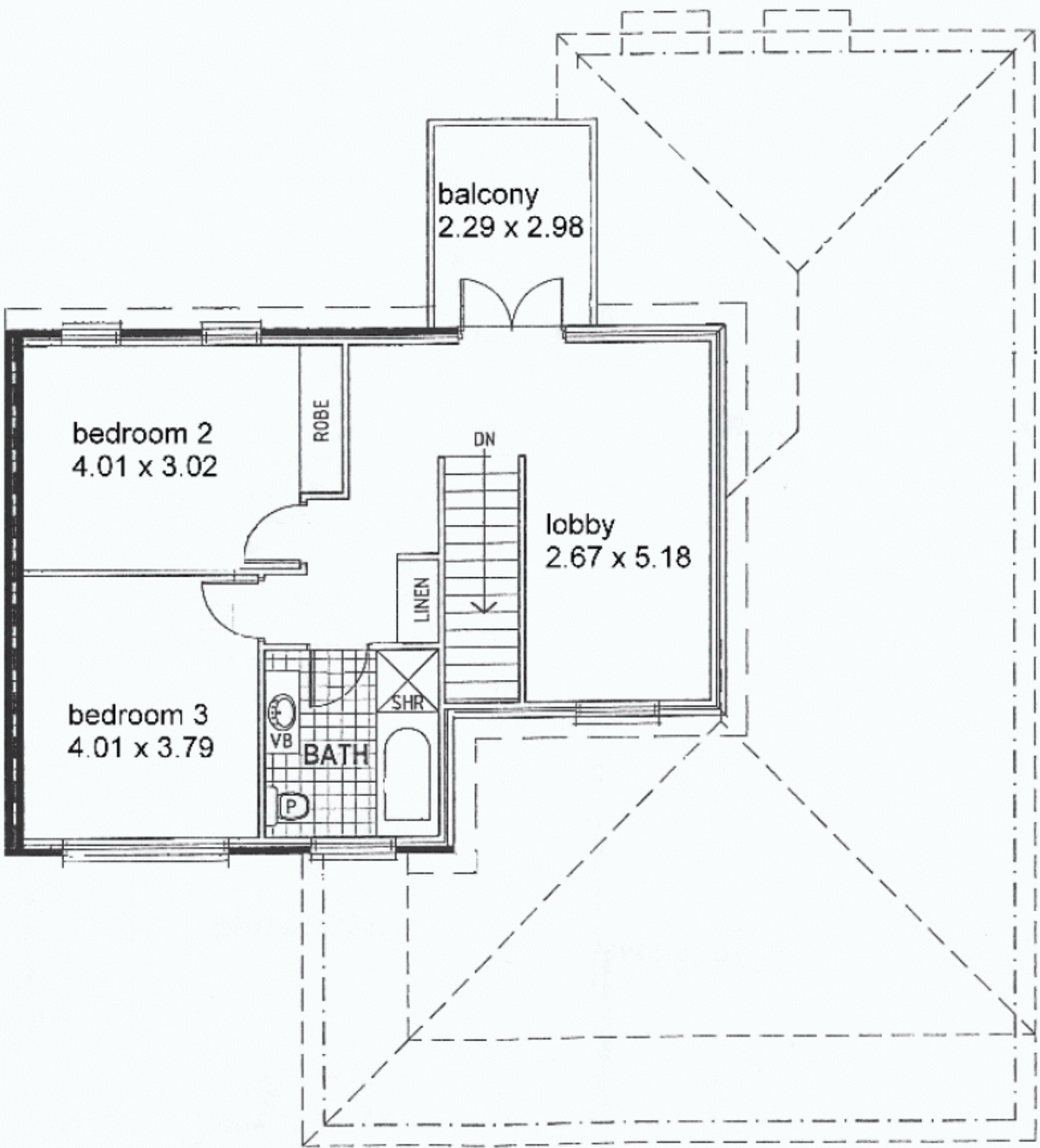
The private road access defines this secure private location. The generous double garage is easy to drive in and out and has ample room for storage. The rear roller door provides access to the rear court yard and can be opened up for entertaining.

The broad entrance foyer and out site portico welcome you into this home. The ground floor is fully tiled and opens up onto a huge living space, family area, formal and informal eating as well as the large kitchen. You will love the granite bench tops, glass splash backs, stainless steel European appliances and the two pact cupboards. Big pantry, big laundry so practical, you'll love the layout it works so well.



Bevan Bruse
08 8431 8181





balcony
2.29 x 2.98

bedroom 2
4.01 x 3.02

ROBE

DN

lobby
2.67 x 5.18

LINEN

bedroom 3
4.01 x 3.79

VB

BATH

SHR

P