



**22 Darley Road PARADISE SA**

4 2 4

**\*\* SOLD - AWAITING SETTLEMENT \*\***

22 Darley Road, PARADISE

\$390,000-\$415,000 UNDER CONTRACT/UNDER OFFER  
SOLD BY BEVAN & THEON BRUSE. TO GET THE  
MAXIMUM PRICE WITH THE MINIMUM OF FUSS CALL  
BEVAN BRUSE TODAY on 0419 809 852 OR THEON  
BRUSE on 0419 816 470.

Priced to be sold quickly well under the council valuation of \$465,000.

A great opportunity for large families or the wise investor looking for an excellent rental return with high growth on the land value.

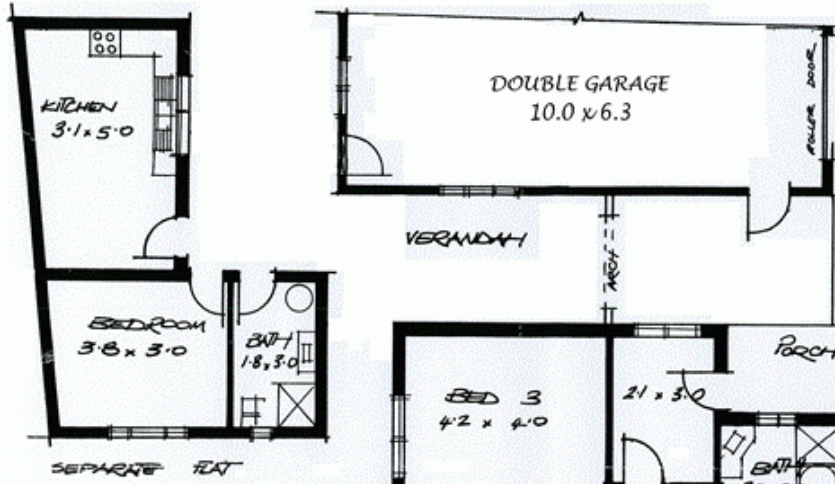
Fully self-contained solid brick unit! Wow. The unit has a potential rental income of (approx) \$150p/wk. A great way

**View** : <https://www.bruse.com.au/sale/sa/north-north-east-suburbs/paradise/residential/house/5550735>



**Bevan Bruse**  
**08 8431 8181**

22 DARLEY ROAD  
PARADISE.



0 1 2 3 4 5  
SCALE: 1cm = 1m

AREAS	M <sup>2</sup>
LIVING	171.86
PORCH	4.30
TOTAL	176.36 (APPROX 19 SQS)
FLAT	39.20 (APPROX 4 1/4 SQS)
GARAGE	69.68
VERANDAH	36.86
TOTAL	322.10 (APPROX 34 1/2 SQS)

