

LEICESTER AVENUE

36A-36B Leicester Avenue KILBURN SA

3 2 2

SOLD BY BEVAN & THEON BRUSE. TO GET THE MAXIMUM PRICE WITH THE MINIMUM OF FUSS CALL BEVAN BRUSE OR THEON BRUSE TODAY!!

View : <https://www.bruse.com.au/sale/sa/north-north-east-suburbs/kilburn/residential/house/5550930>

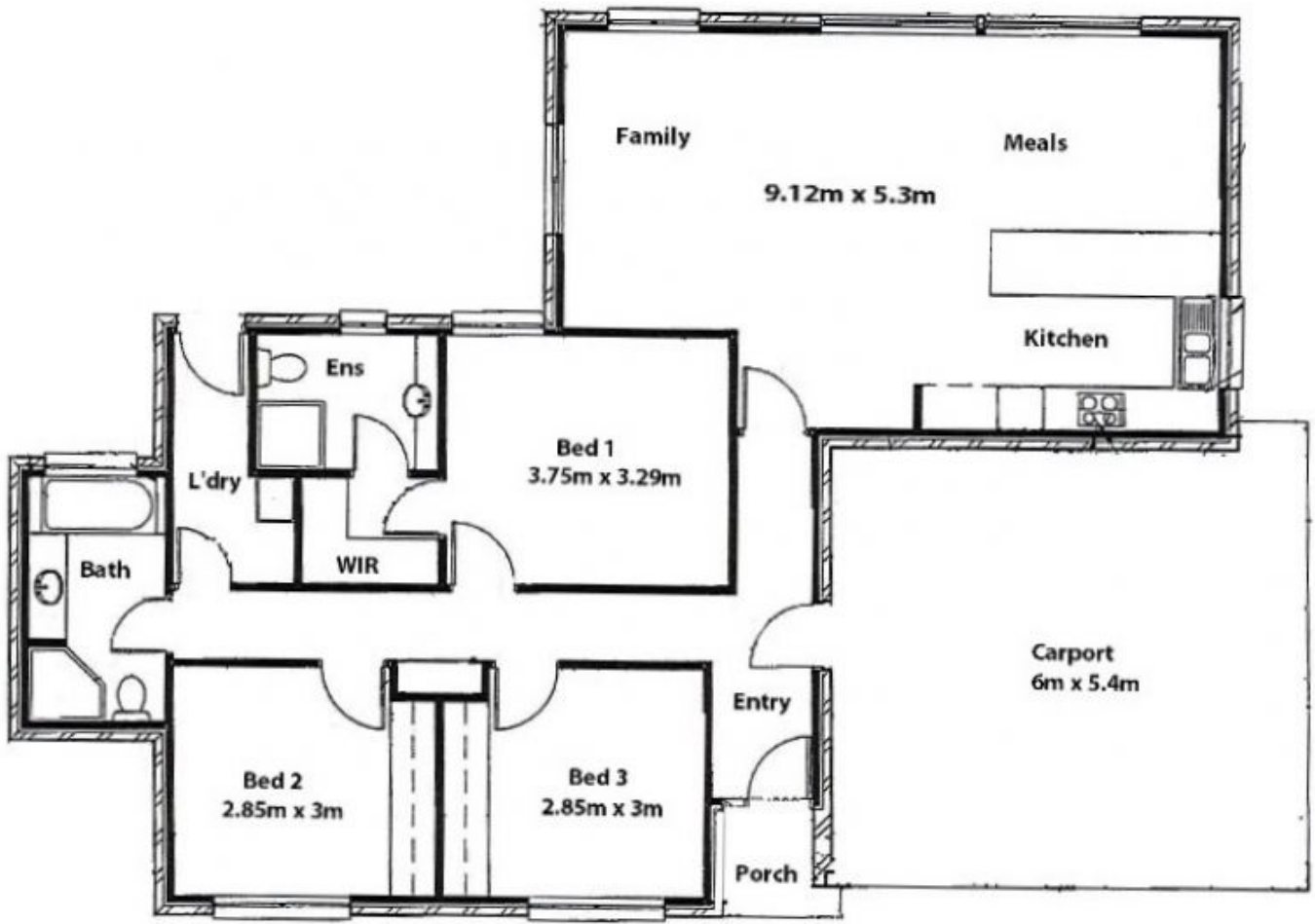
2 new homes to be built including all the extras. Fixed price, ready to build contracts. Absolute value in a top spot. A unique opportunity.

36A \$363,620 - Total package cost
36B \$348,657 - Total package cost

PLANS APPROVED.
FIXED PRICE BUILDING CONTRACTS HAVE BEEN SIGNED.
DEPOSIT FOR BUILDING CONTRACT ALREADY PAID.
ONLY FOR SALE DUE TO OWNERS INTERSTATE TRANSFER.



36A Leicester Avenue



36B Leicester Avenue