



70 Wood Avenue RIDLEYTON SA

4 1 2

SOLD BY TOBY SHIPWAY. TO GET THE MAXIMUM PRICE WITH THE MINIMUM OF FUSS PLEASE CALL TOBY SHIPWAY TODAY!

Building Size : 19 sqm
View : <https://www.bruse.com.au/sale/sa/western-beachside-suburbs/ridleyton/residential/house/5550941>

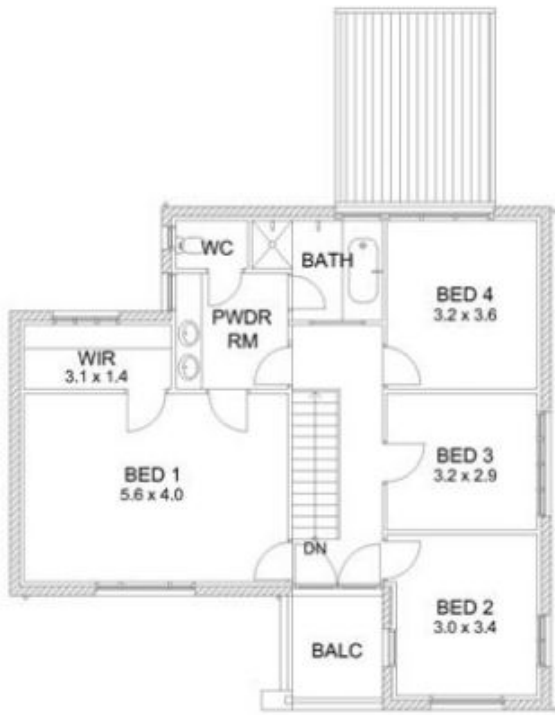
One of a kind!

This one off architecturally designed and custom built home offers a rare opportunity to purchase a quality residence in an excellent city fringe location. Recently updated the property is in immaculate condition with attention to detail throughout. Every effort has been carefully put into the design of this wonderful home to ensure energy efficient and sustainable living is achieved.

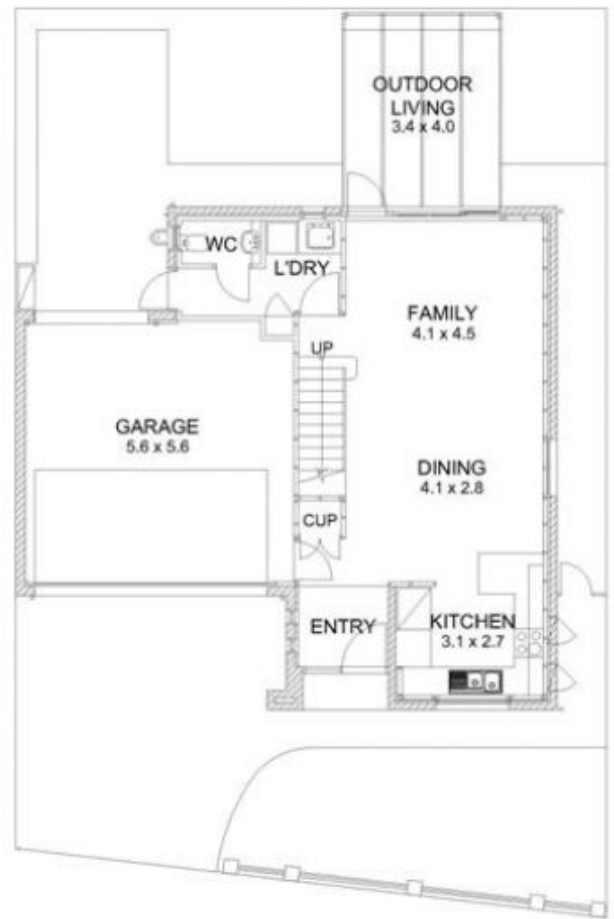


Toby Shipway
8413 8181

Located just metres away from Hawker Street adjacent to the Josiah Mitton Reserve (Brompton) the property is situated on a very appealing tree lined street with a



FIRST FLOOR PLAN



GROUND FLOOR PLAN