



**8C Wemyss Street LINDEN PARK SA**

3 2 2

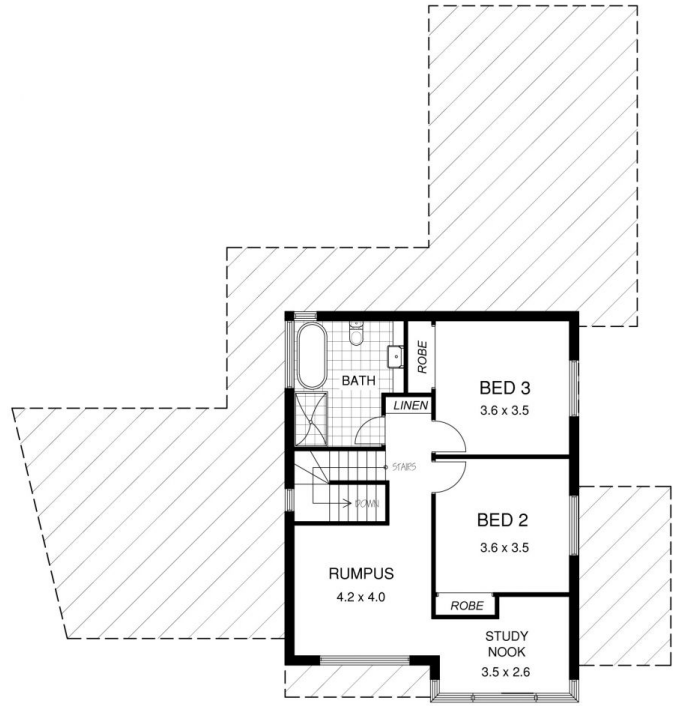
**SOLD BY THEON BRUSE & TOBY SHIPWAY. TO GET THE MAXIMUM PRICE WITH THE MINIMUM OF FUSS CALL THEON BRUSE OR TOBY SHIPWAY TODAY!**

**View :** <https://www.bruse.com.au/sale/sa/eastern-suburb/s/linden-park/residential/house/5550947>

Embracing style, creativity and individuality, this architecturally designed and custom built home offers spacious and luxurious living to suit the modern family lifestyle. Featuring an amazing main bedroom suite on the ground level, 4 free flowing living spaces and a secure double garage. Contemporary and impressive!

Located in this tightly held Eastern suburb, all the conveniences of easy lifestyle living are located nearby. Walking distance to great shopping and dining at Burnside Village, the city less than 10 minutes away and within close proximity to Adelaide's best schools. Across the road is the lovely Tregenza oval and park. Linden Park has it all.

# 8B Wemyss Street



# 8C Wemyss Street

