



Total Land Size
1346m² - 30.48m x 44.19m



25 Brougham Street MAGILL SA

3 **1** **2**

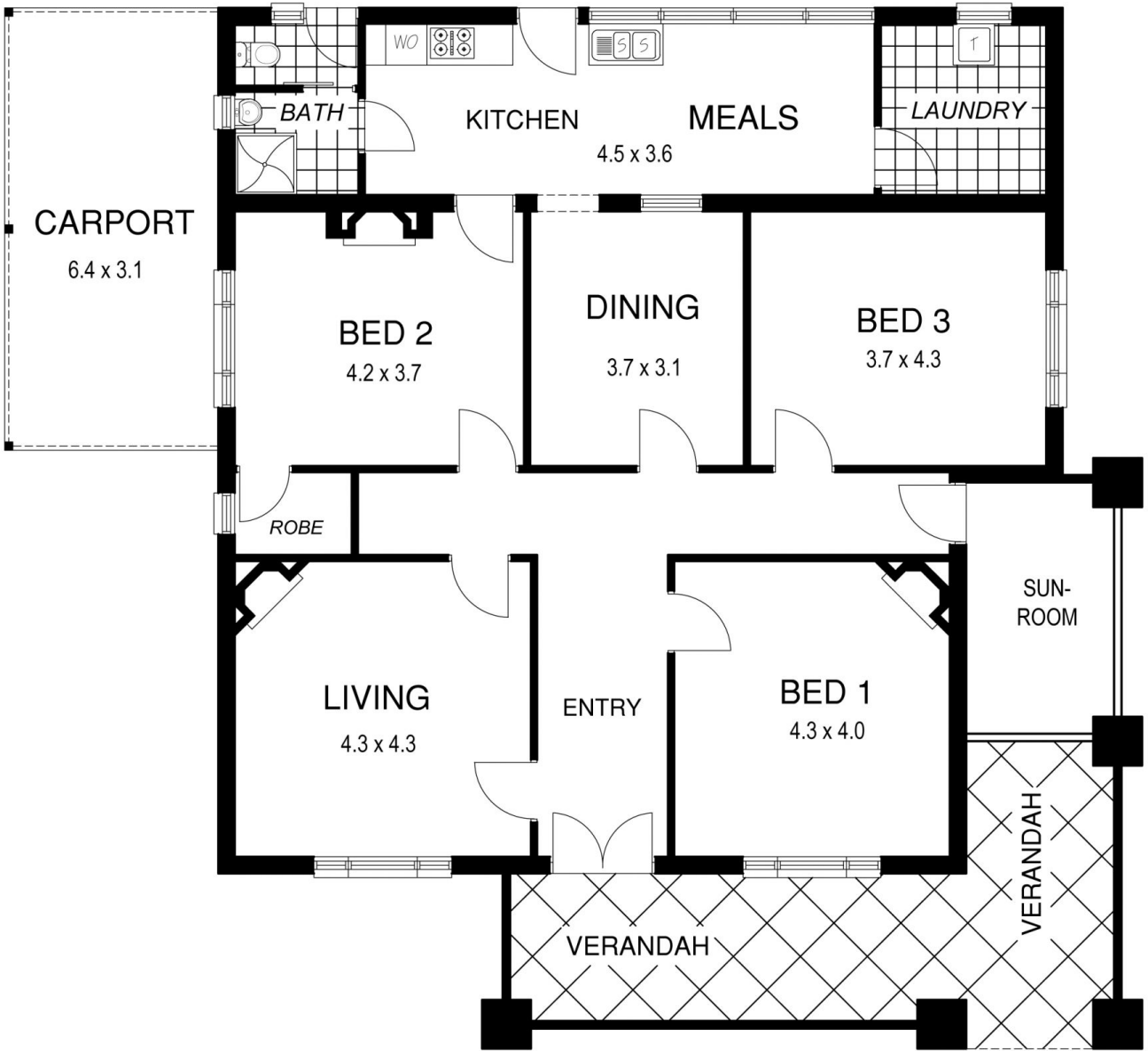
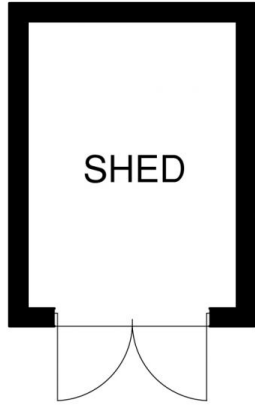
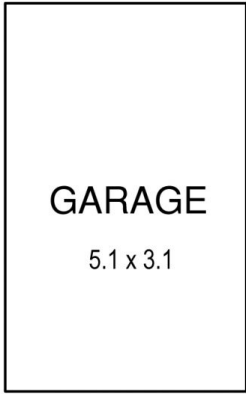
SOLD BY BEVAN & THEON BRUSE. TO GET THE MAXIMUM PRICE WITH THE MINIMUM OF FUSS CALL BEVAN BRUSE OR THEON BRUSE TODAY!

Land Size : 1346 sqm
View : <https://www.bruse.com.au/sale/sa/eastern-suburbs/magill/residential/house/5551013>

This is an excellent portion of land, 1346m² with a frontage of 30.48m and a depth of 44.19m.

THE PROPERTY INCLUDES A GOOD SIZE BUNGALOW HOME THAT IS IN ORIGINAL CONDITION. THIS HOME HAS BEEN WELL KEPT AND MAINTAINED FOR MANY YEARS BUT HAS NOT BEEN UPGRADED TO TODAY'S STANDARDS. BUYERS CAN MOVE IN AND LIVE IN THE HOME AS IT IS THEN CHANGE THINGS AT THEIR LEISURE.

The home has character and charm and has the original



Total Land Size 1346m² - 30.48m x 44.19m

