



137 Dunrobin Road WARRADALE SA

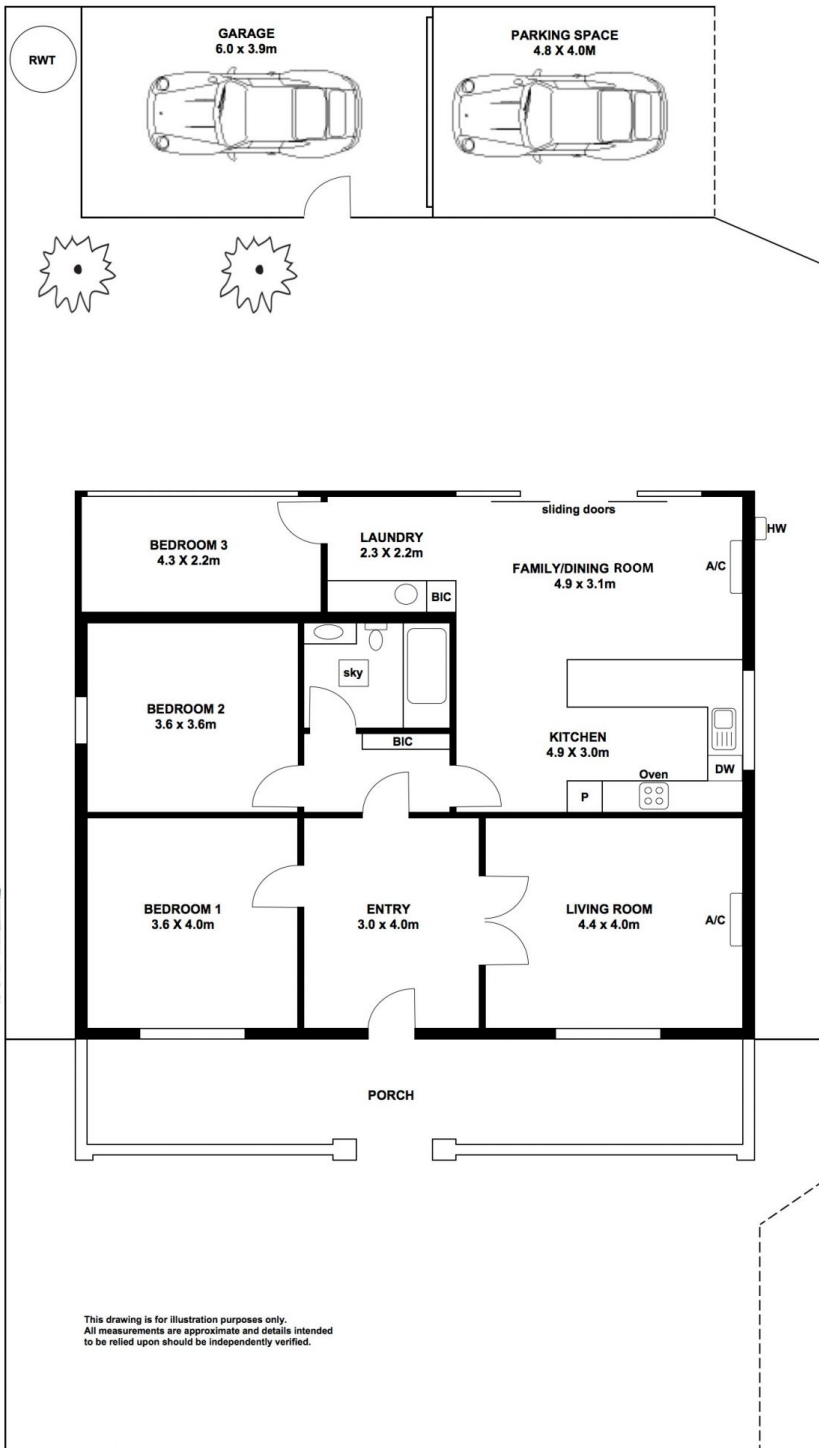
3  **1**  **1** 

SOLD BY BEVAN & THEON BRUSE. TO GET THE MAXIMIM PRICE WITH THE MINIMUM OF FUSS CALL BEVAN BRUSE OR THEON BRUSE TODAY!

View : <https://www.bruse.com.au/sale/sa/western-beach-side-suburbs/warradale/residential/house/5551046>

THIS STUNNING CHARACTER HOME HAS HAD A TOTAL RE-VAMP AND IS ABSOLUTELY SUPERB VALUE AS IT WILL SUIT MANY BUYERS SEEKING A FIRST HOME IN THE AREA OR THOSE SEEKING A RETIREMENT STYLE PROPERTY WITH AN IMMENSE AMOUNT OF CHARACTER AND CHARM.

This is a community titled home with off street car parking for 2 vehicles, one in a lockup garage and one in front of the lockup garage at the rear of the home. The shared driveway leads to the car parking and further through to a home at the rear of the allotment.



COMMON DRIVEWAY

This drawing is for illustration purposes only.
 All measurements are approximate and details intended
 to be relied upon should be independently verified.

