






For Illustration Purposes Only

52A Maple Avenue ROSTREVOR SA

3  2  2 

2 very spacious new homes under construction. Over 245m² of house size. High end quality and excellent designs

Land Size : 376 sqm

View : <https://www.bruse.com.au/sale/sa/eastern-suburbs/rostrom/residential/house/5551072>

Freestanding and separate Torrens Title.
376m² of land for a good size back yard.

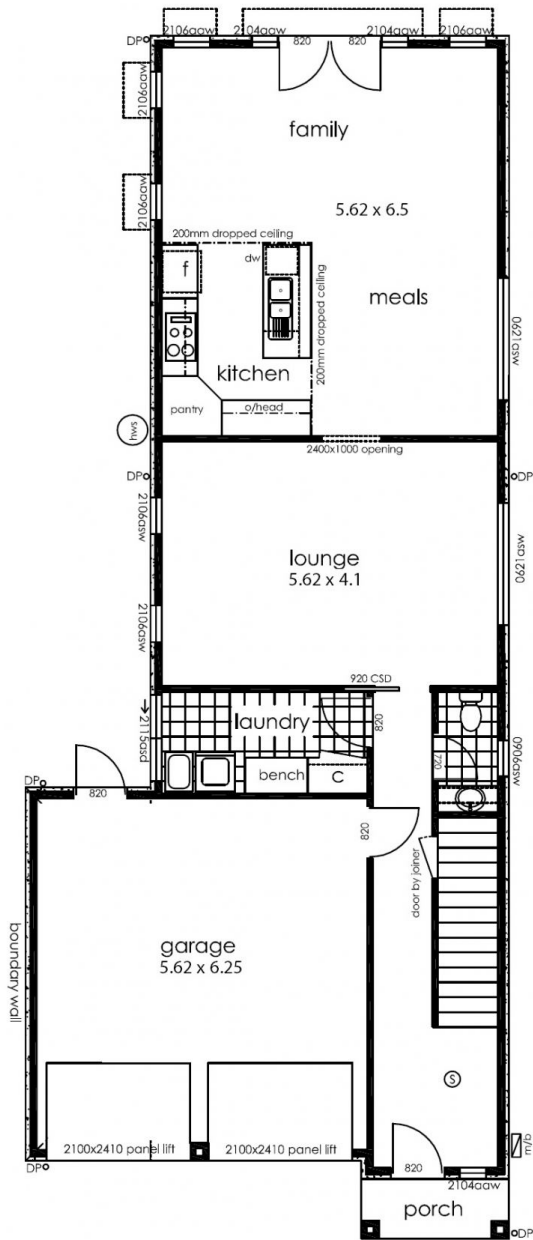
3 large living areas.
3 bedrooms. 2.5 bathrooms.
Double lockup garage.
Lots of extra storage.
Spectacular kitchens with stone bench tops.
900mm Blanco oven and gas cooker plus dishwasher.

Sold as a finished home for a fixed price.
SETTLEMENT AT COMPLETION.
Approximate finish date of mid to end of 2015.
Option to choose internal colours at this stage.

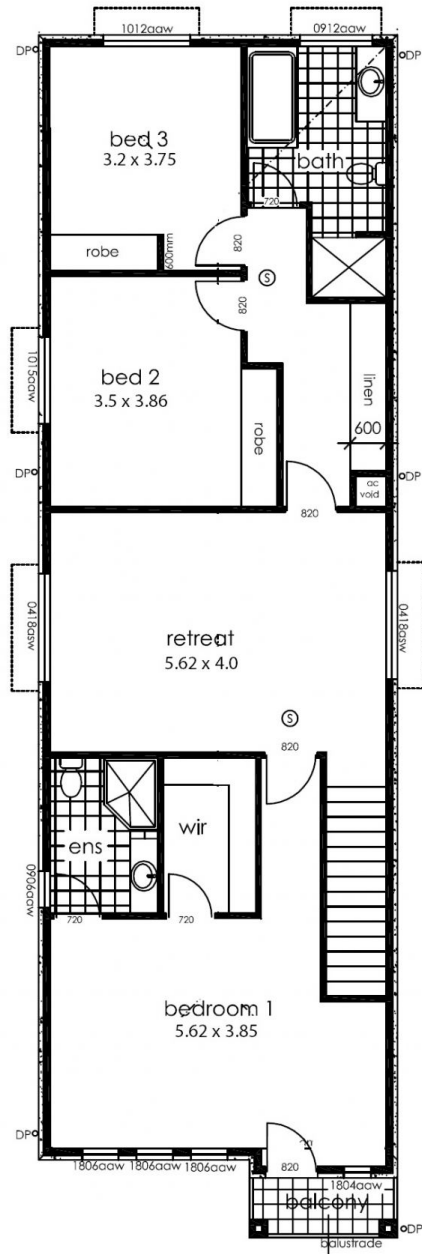
Excellent designs!
Excellent quality!
Excellent location!

Call Theon Bruse on 0419 816 470 for more information.

Theon Bruse 0419 816 470



Lower Level



Upper Level

