

11 Ridgefield Avenue DERNANCOURT SA

3 1 2

SOLD BY TOBY SHIPWAY. TO GET THE MAXIMUM PRICE WITH THE MINIMUM OF FUSS CALL TOBY SHIPWAY TODAY!

Situated on a good sized flat allotment of 711 sqm with a generous 19.2 metre frontage, this property offers an exciting opportunity for buyers looking to build their dream home and/or developers looking to subdivide and build two new homes (STCC)

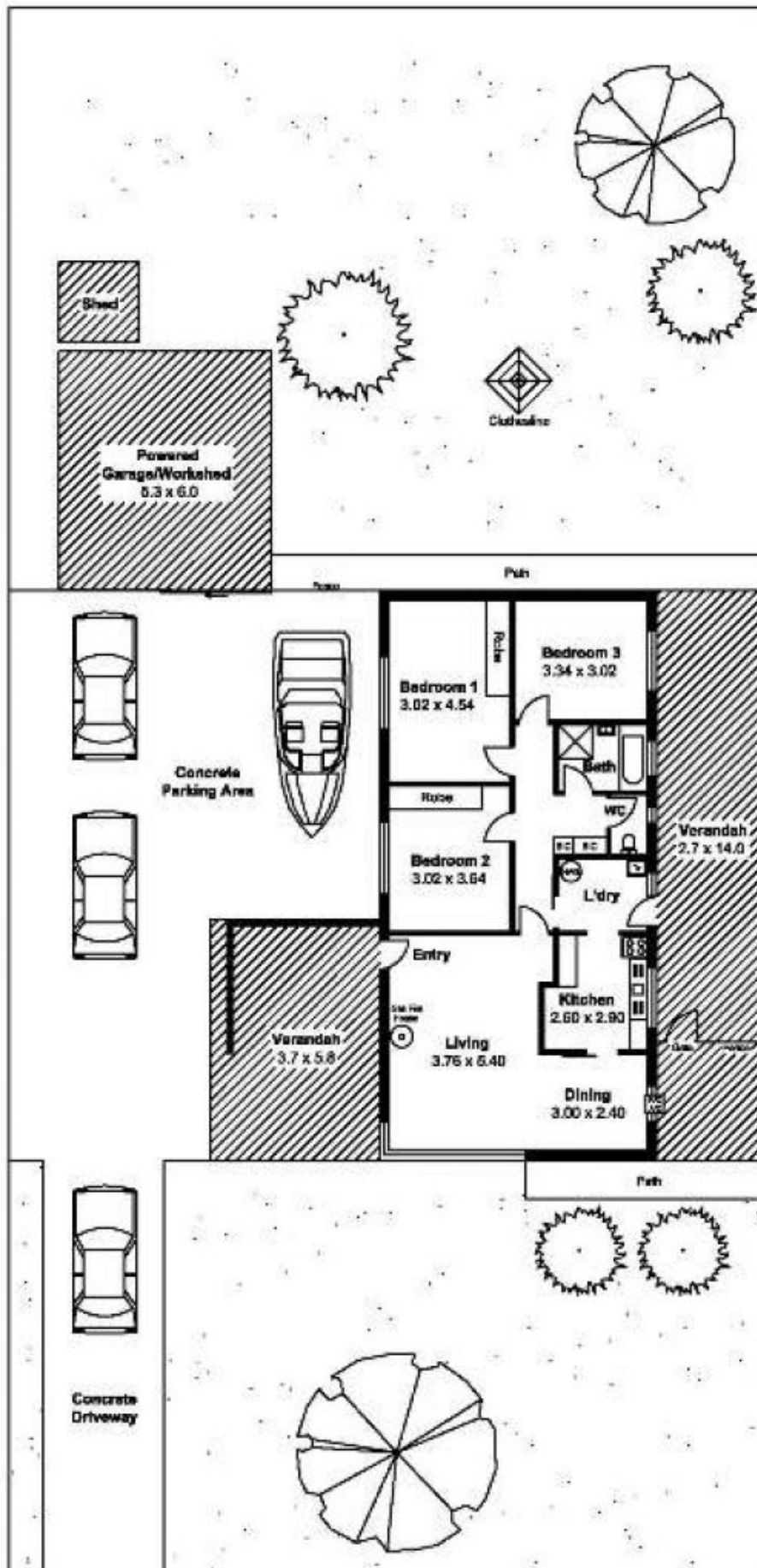
This solid brick home also provides a great option for the keen renovator and investor, currently tenanted at \$300 per week on a periodic agreement.

The location fantastic, less than 150 metres from Linear Park and the River Torrens, surrounded by public transport options with the O-Bahn within short walking distance and

Building Size : 10 sqm
Land Size : 711 sqm
View : <https://www.bruse.com.au/sale/sa/north-north-east-suburbs/dernancourt/residential/house/5551076>



Toby Shipway
8413 8181



11 Ridgefield Avenue, Dernancourt

While every endeavour has been made to verify the correct details of this publication, neither the agent, vendor nor contracted illustrators accept liability for any error or omission. Information intended to be relied upon should be independently verified.