



4 Eucla Avenue WARRADALE SA

3 2 2

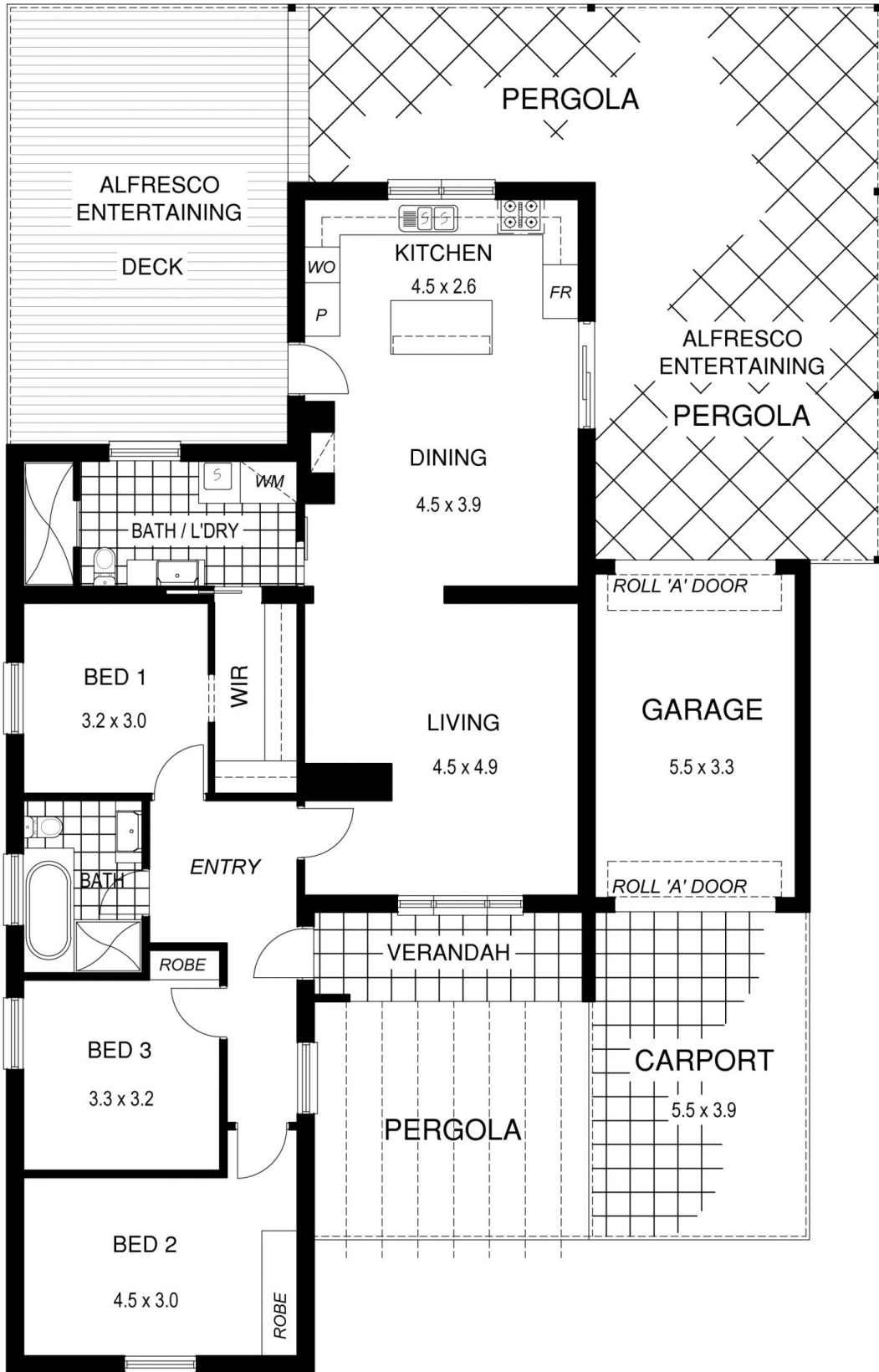
Totally renovated to a very high standard. This beachside beauty is ready to go. Generous landscaped allotment of approx. 676m².

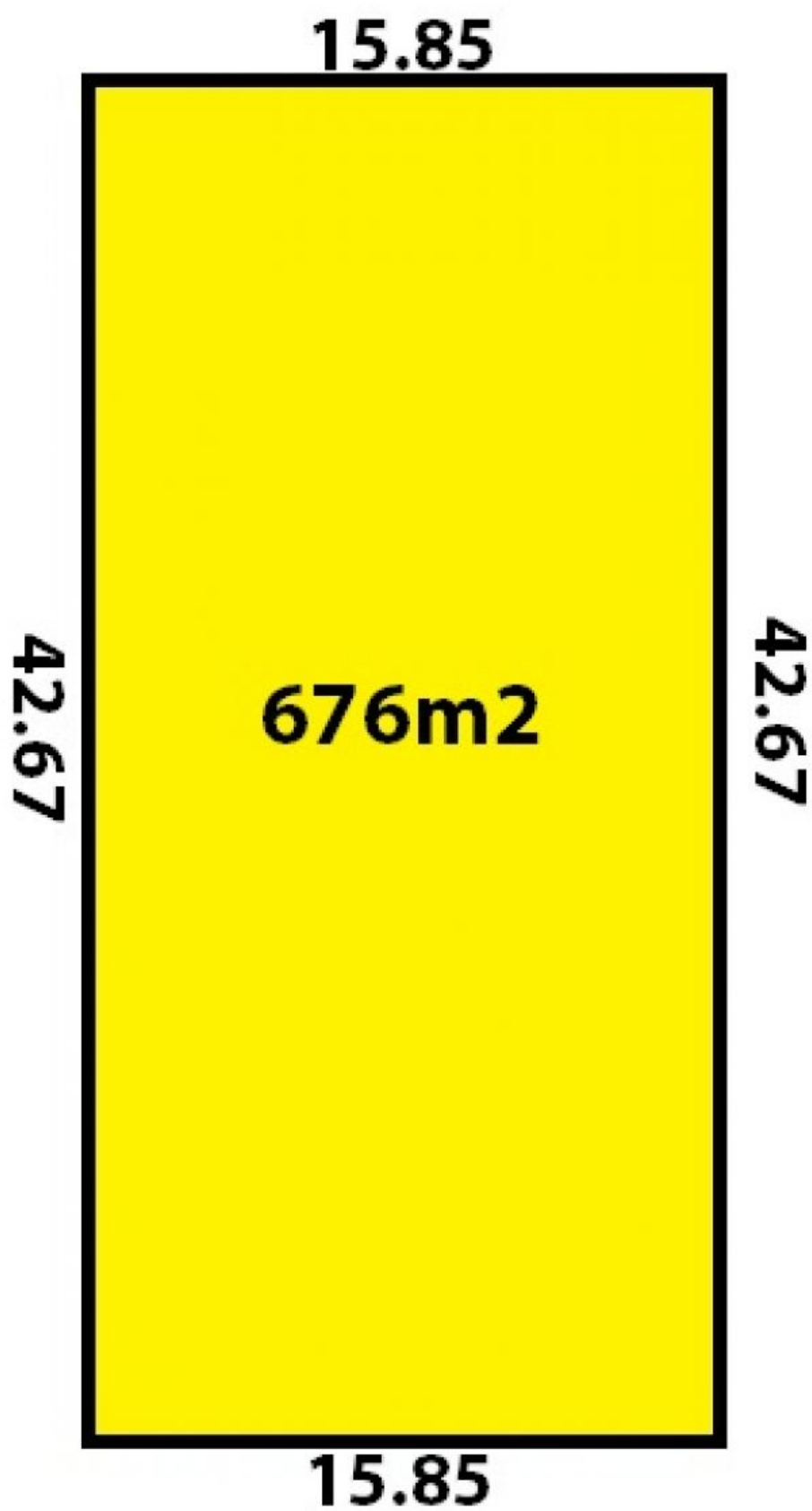
Set behind attractive secure fencing with electric remote control gate. This fantastic home has a great street appeal.

This home oozes designer style and includes spacious light and bright living spaces that enjoy a modern but warm and relaxed feel. You will love the gourmet kitchen featuring quality 2-pac cabinetry, stone bench tops including a huge central island breakfast bar and 900mm appliances. The kitchen has the perfect picture window overlooking the big back yard. Fantastic!

Open up the doors and you have the perfect flow from the inside to the huge outdoor alfresco pergola area and

Land Size : 676 sqm
View : <https://www.bruse.com.au/sale/sa/western-beachside-suburbs/warradale/residential/house/5551084>





EUCLA AVENUE