

19 Wisteria Grove FELIXSTOW SA

4 2 2

Immaculate home. 4 bedrooms. Open plan living, dining and kitchen. 2nd living area. Double garage with drive-through for 3rd undercover carpark.

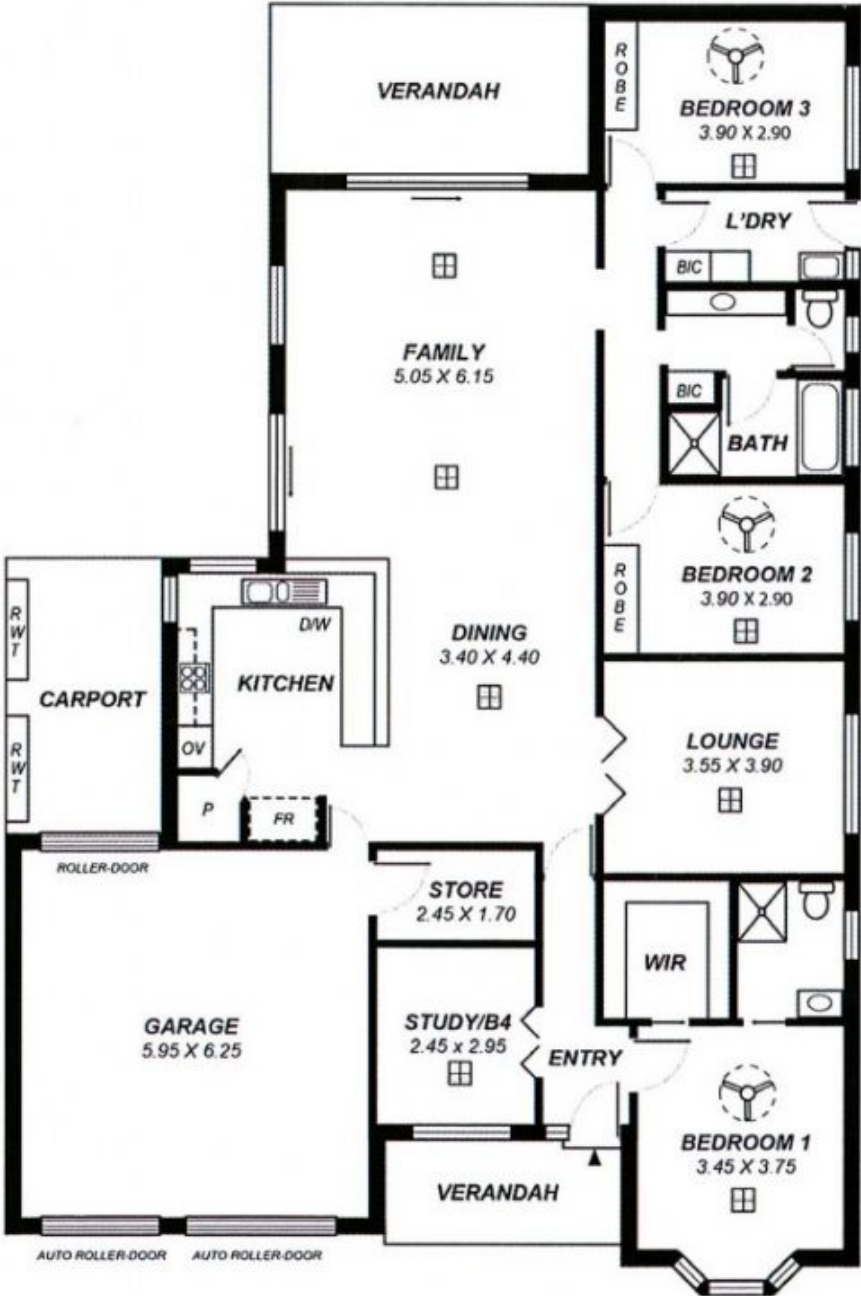
Land Size : 453 sqm
View : <https://www.bruse.com.au/sale/sa/eastern-suburbs/felixstow/residential/house/5551130>

The location of this home is just brilliant. It is so close to all conveniences of the area, only really a hop, step and a jump to the city centre and close to shopping centres, Marden, Walkerville and Norwood Parade just to name a few.

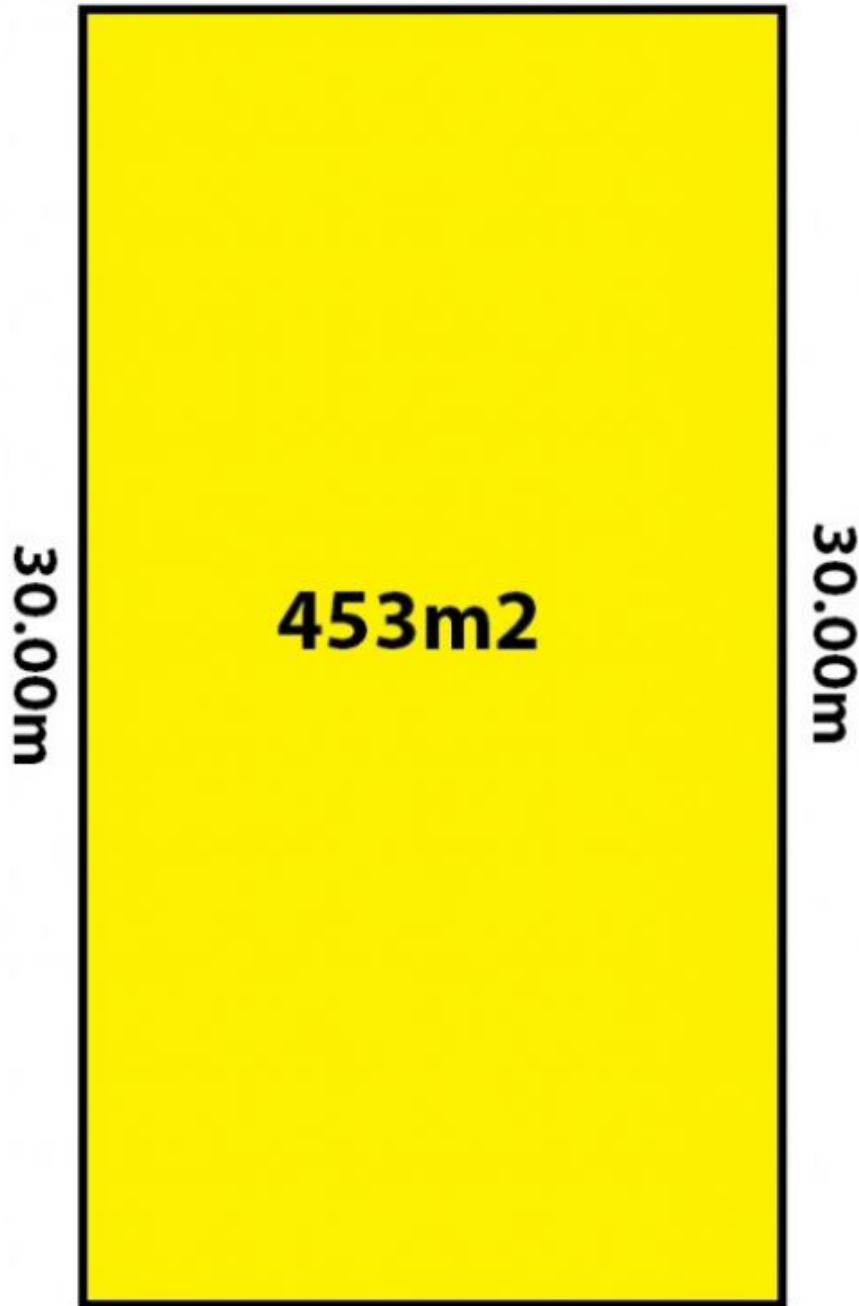
This is a great home that will suit many buyers from all walks of life.

Positioned extremely well in a newish sub-division built in 2000, this well established home is surrounded by other quality homes of a similar character.

SHED



15.12m



30.00m

453m²

30.00m

15.12m

WISTERIA GROVE