



**21 Greenknoll Avenue ROSTREVOR SA**

4 1 3

746m2 of land with a wide 18m frontage (approx.)

Lots of car-parking with a double garage plus a secure carport.

**Land Size** : 746 sqm

**View** : <https://www.bruse.com.au/sale/sa/eastern-s-uburbs/rostromv/or/residential/house/5551241>

Separate Studio room or 4th Bedroom

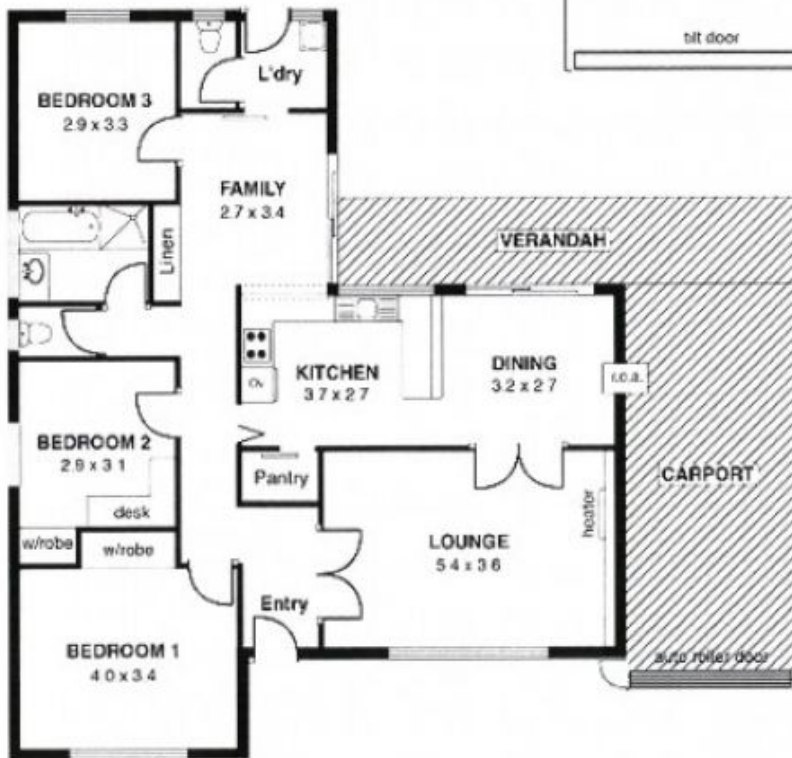
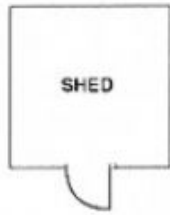
3 Bedrooms (4 including the Studio)

Separate Lounge Room

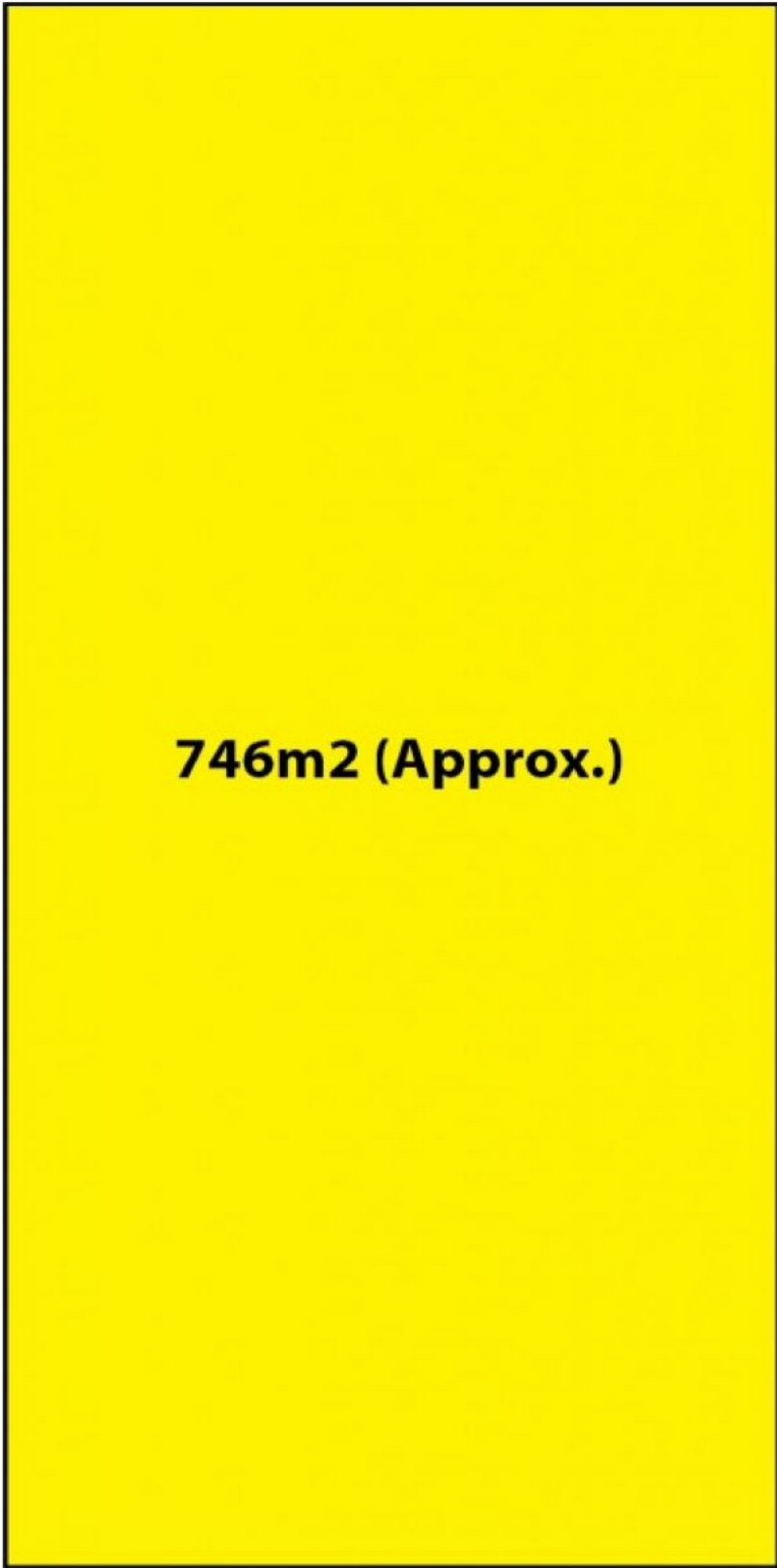
Separate Kitchen and Dining Area

Separate Family room or children's Living Space

New stylish timber look floors



18m



41.45m

41.45m

18m

**GREENKNOLL AVENUE**