

1B Brae Road ST GEORGES SA

3 2 2

A WONDERFUL LOCATION. 1B BRAE ROAD OVER LOOKS A PARK TYPE SETTING AND IS A HOME THAT OFFERS GENEROUS ACCOMMODATION FOR FAMILY LIVING IN A VERY AFFORDABLE PRICE RANGE FOR THIS PRIME LOCATION.

Price : \$ 765,000
Land Size : 814 sqm
View : <https://www.bruse.com.au/sale/sa/eastern-suburbs/st-georges/residential/house/5551324>

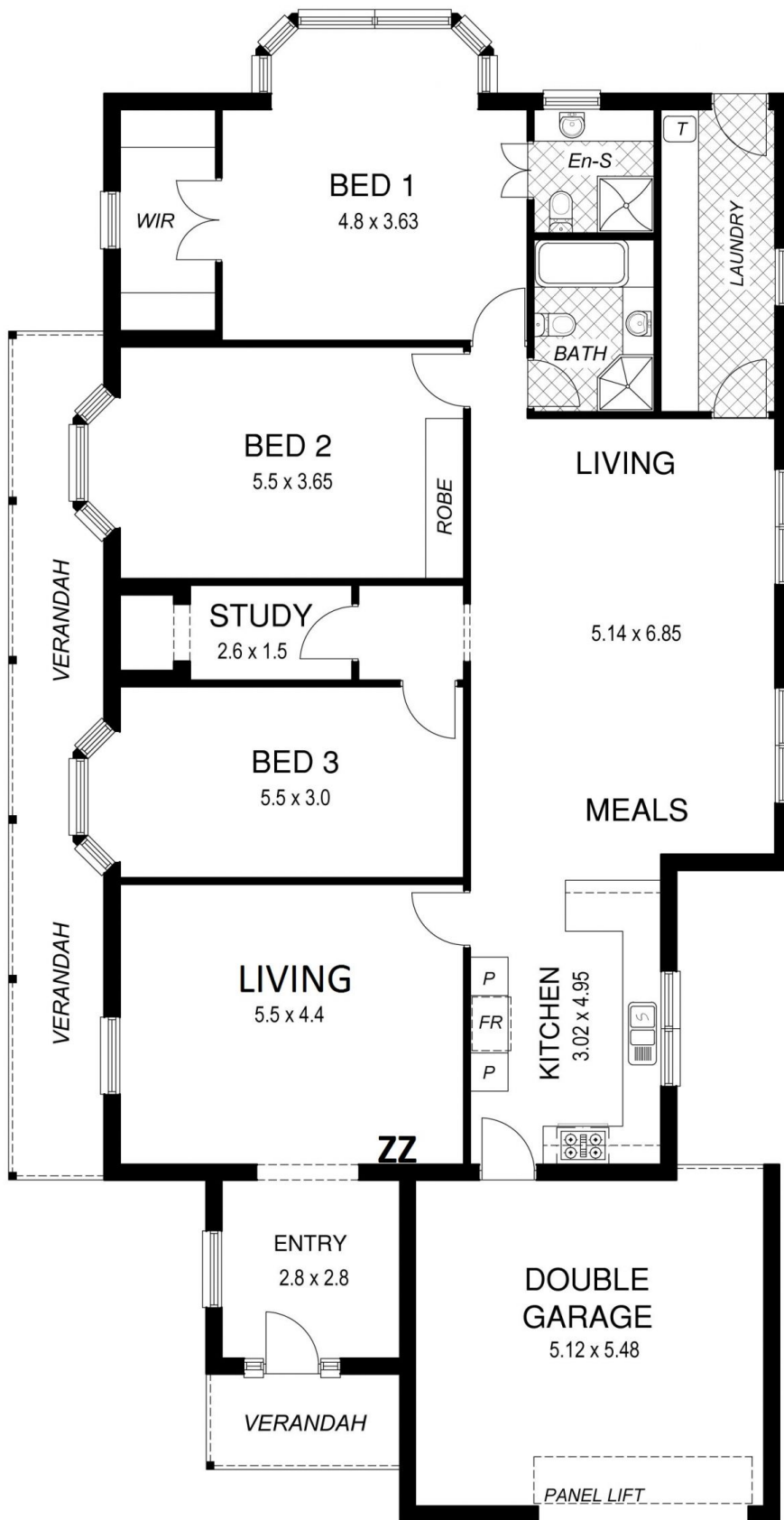
The home features a stunning entrance hallway with further access to the generous living room. This amazing room has direct access to the kitchen, family and dining area.

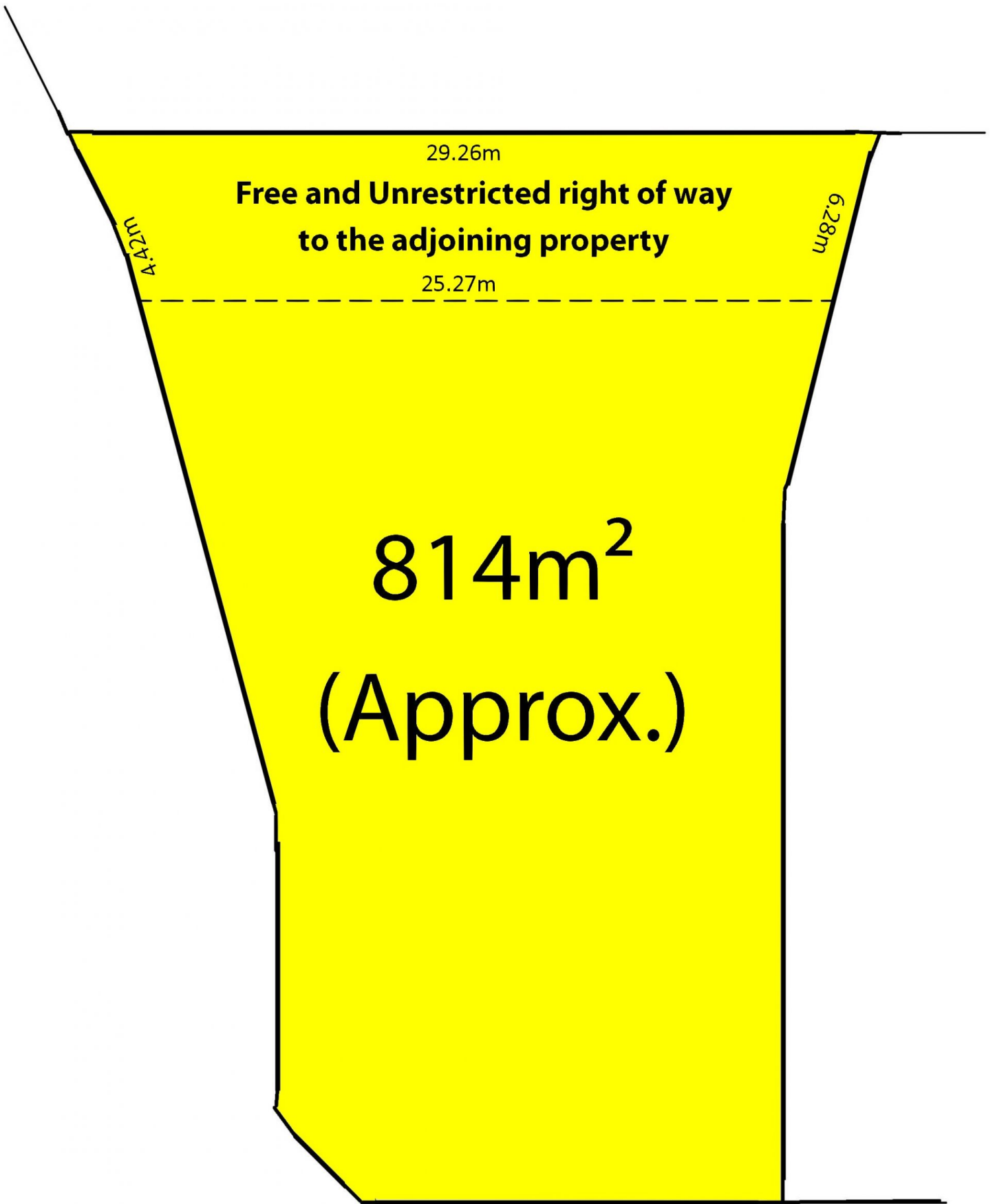
The hub of the home living room has an outlook to the gardens of the residence and is really a great hub for family living. A room to relax and enjoy life.

The home also includes three good size bedrooms, the main bedroom with an ensuite and a very large walk-in



Bevan Bruse
08 8431 8181





BRAE ROAD