



20 Historic Drive HIGHBURY SA

5 3 2

A wonderful home with a unique design.

This home has a fully self contained home with its own front entrance but also makes part of the main residence. Buyers could use this as a home for extended family or even a teenagers retreat or just extra living spaces. It features a lounge & dining room, kitchen, bedroom & bathroom. Fantastic!

Moving onto the balance of the main home which features a formal sitting and dining room with a warm and inviting feel. The hub of the home has open plan living, meals and kitchen which opens out to the huge outdoor alfresco entertaining area. 4 bedrooms and 2 bathrooms. You will be impressed with the quality of this well-designed home.

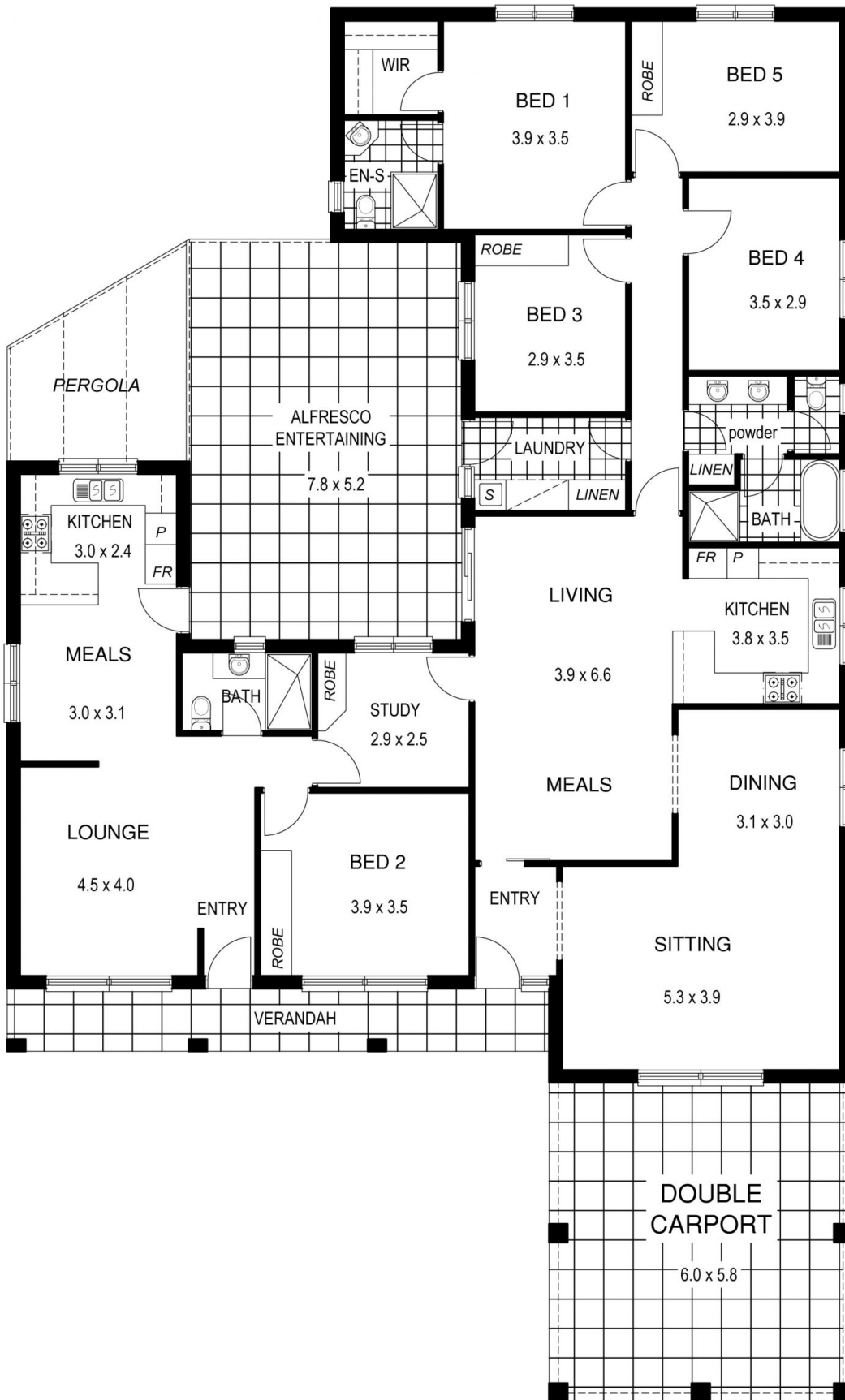
- Gas heating
- Ducted air-conditioning

Land Size : 699 sqm

View : <https://www.bruse.com.au/sale/sa/north-north-east-suburbs/highbury/residential/house/551340>



Theon Bruse
08 8431 8181



19.00

699m²

(Approx.)

38.45

38.45

2.92

16.33

HISTORIC DRIVE