




3 Walker Place HIGHBURY SA

4  2  4 

ABSOLUTELY BEAUTIFUL! THIS CRAFTSMAN BUILT HOME WILL SUIT BUYERS WHO APPRECIATE FINE QUALITY AND CHARACTER WITH ALL THE MODERN CONVENIENCES FOR THE LIFESTYLE OF 2017 ONWARDS.

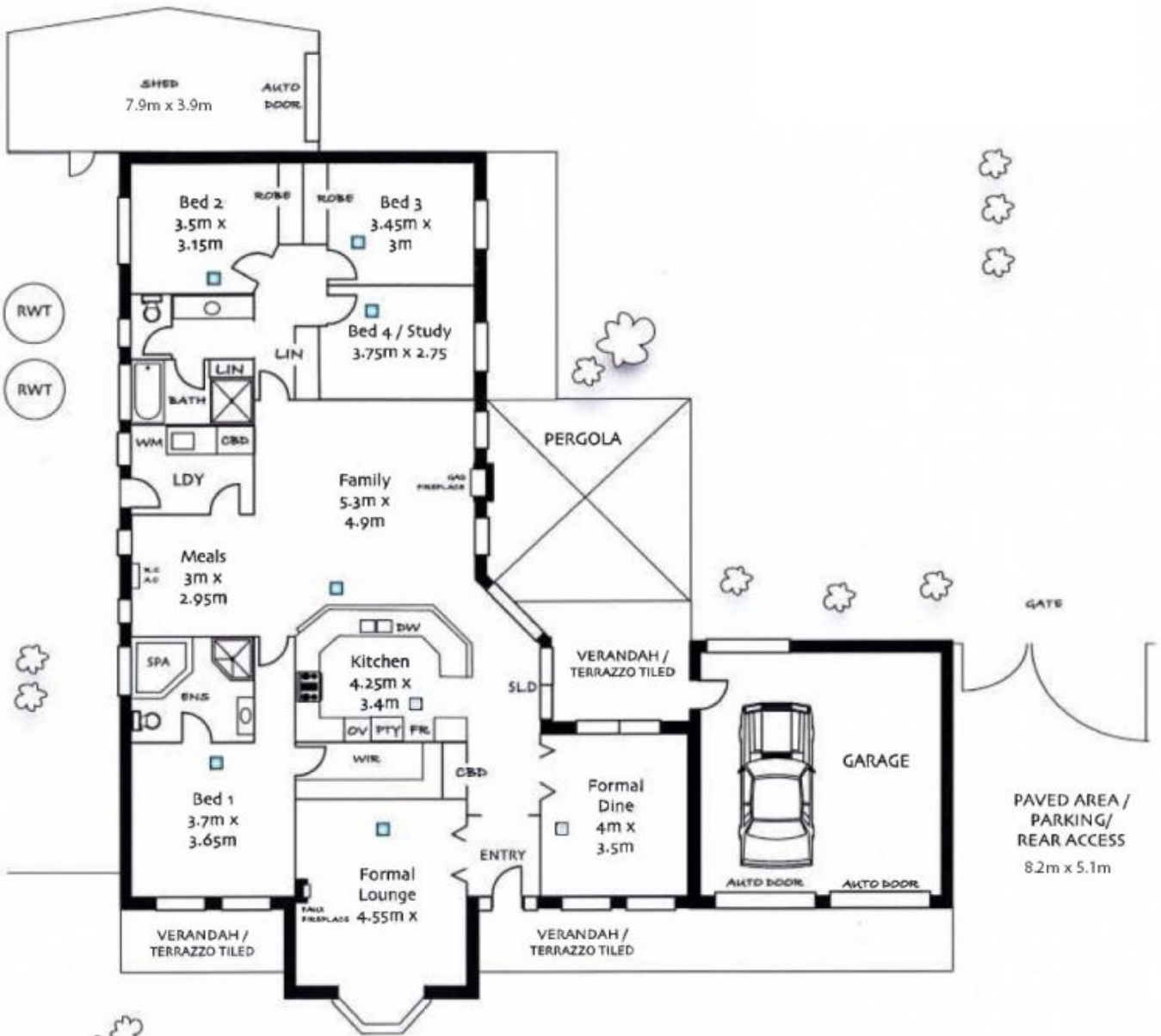
Land Size : 797 sqm
View : <https://www.bruse.com.au/sale/sa/north-north-east-suburbs/highbury/residential/house/551427>

This home has a double garage plus a second car parking area adjacent the home that would suit a boat or caravan. Very handy! Lovely Linear Park and its open green spaces sits at the end of the Street. Buyers will love with this location.

- Generous allotment of land with 797sqm set in an absolutely beautiful garden setting.
- 3 living areas.
- 4 bedrooms and 2 bathrooms including a fantastic main bedroom suite and ensuite with spa bath plus a huge



Theon Bruse
08 8431 8181



PAVED AREA /
PARKING/
REAR ACCESS
8.2m x 5.1m