

**9A Beagle Terrace (Adjacent Belair and Torrens Park)
LYNTON SA**

4 🏠 2 🚗 2 🚗

Designed to suit the modern lifestyle, this one off custom built home is a fantastic opportunity to purchase a brand new residence in a tightly held foothills location less than 5 minutes to Mitcham and only 15 minutes to the city.

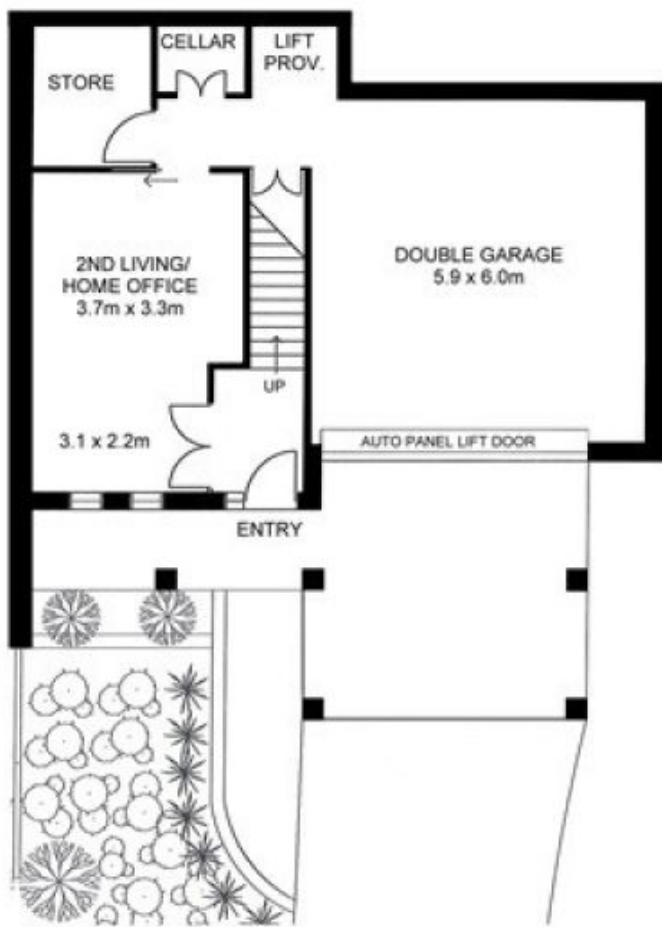
Surrounded by a huge range of shopping and dining options, a variety of excellent schooling to choose from (zoned for Unley High School) and public transport literally at your doorstep, rest assured you'll be enjoying an easy care lifestyle. Located at the end of the street you'll also find the Mitcham Hills Reserves Trail Network where you can enjoy a daily walk or ride through the meandering trails.

Perfectly positioned in a leafy bushland setting, the home boasts immediate WOW! factor with landscaped gardens,

Building Size : 36 sqm
Land Size : 589 sqm
View : <https://www.bruse.com.au/sale/sa/south-south-east-suburbs/lynton/residential/home/5551435>



Toby Shipway
8413 8181



GROUND FLOOR



UPPER FLOOR