



**1/110 Stradbroke Road (Corner of Moyle Avenue)
ROSTREVOR SA**

3 1 1

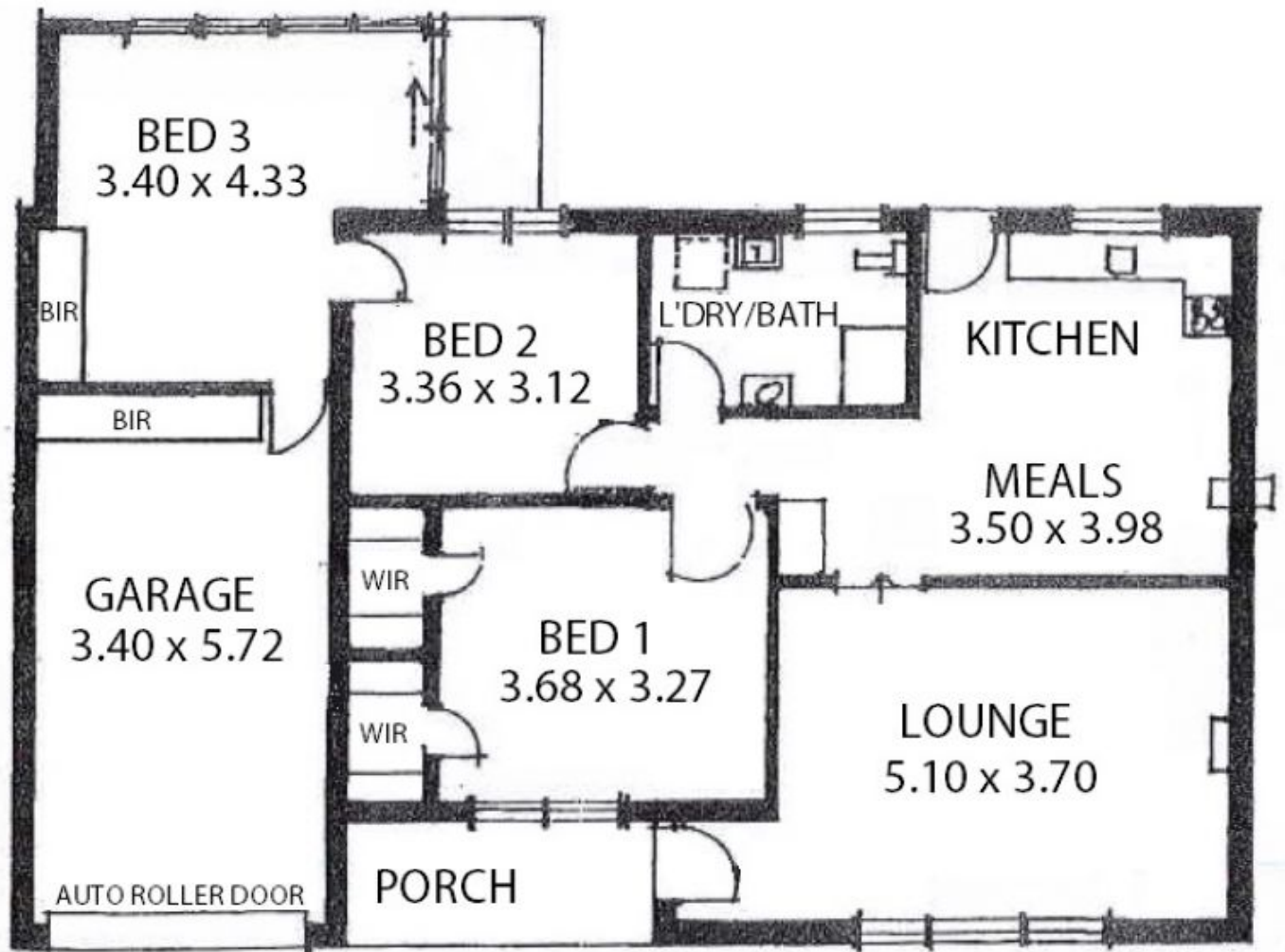
EXCELLENT VALUE IN ROSTREVOR! STREET FACING TO MOYLE AVENUE. BUYERS LOOKING FOR AN AFFORDABLE PROPERTY IN A TOP SPOT NEED TO GET EXCITED ABOUT THIS ONE. SET IN A GROUP OF 2 UNITS THIS PROPERTY IS MORE LIKE A HOME THAN A UNIT. UPGRADED THROUGHOUT WITH A FRESH KITCHEN AND BATHROOM. JUST MOVE IN ... THERE IS NOTHING TO DO.

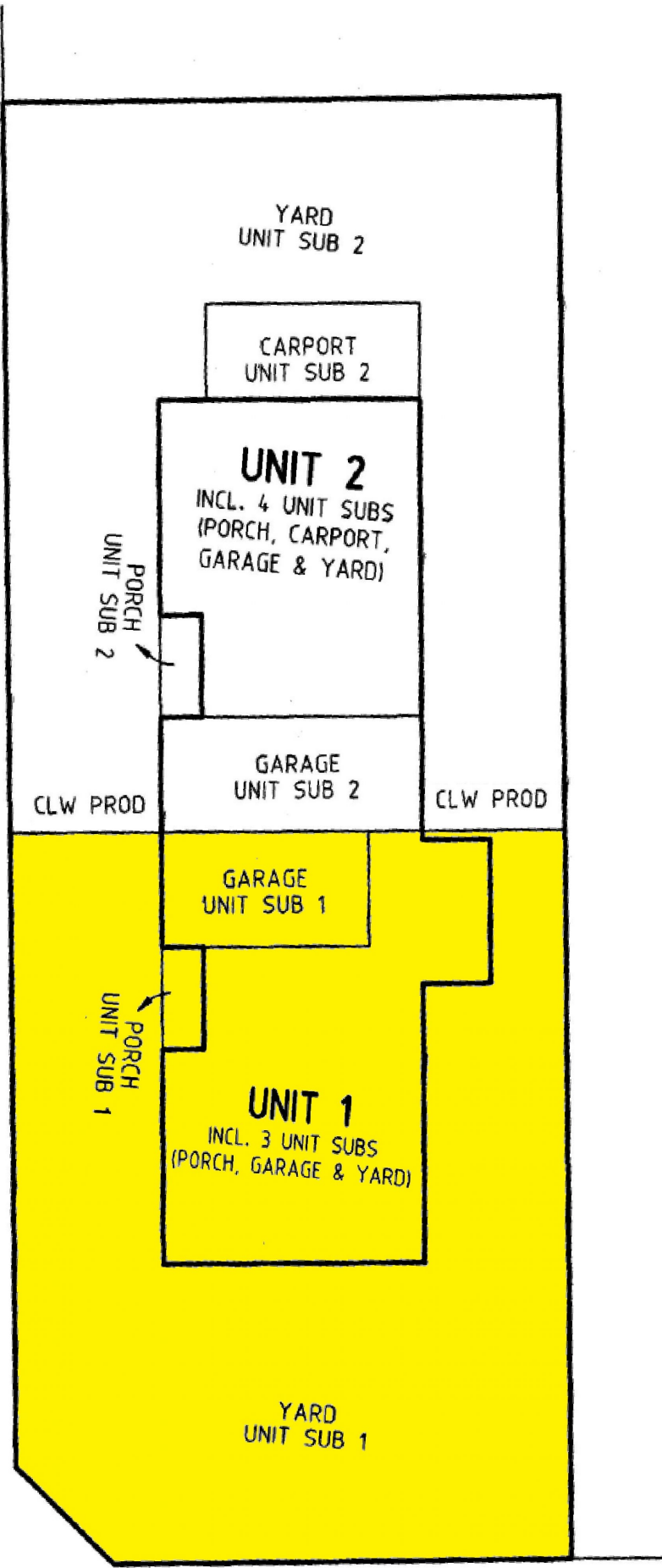
View : <https://www.bruse.com.au/sale/sa/eastern-suburbs/rostrrevor/residential/house/5551460>

- Lovely hillside outlook
- Generous outdoor garden areas
- 3 bedrooms (main bedroom with 2 walk in robes)
- 2 living spaces
- Lock up garage
- Stylish kitchen
- Reverse cycle air-conditioning



Theon Bruse
08 8431 8181





STRADBROKE ROAD