



**2A Newman Street MAGILL SA**

4 🚗 2 🚗 2 🚗

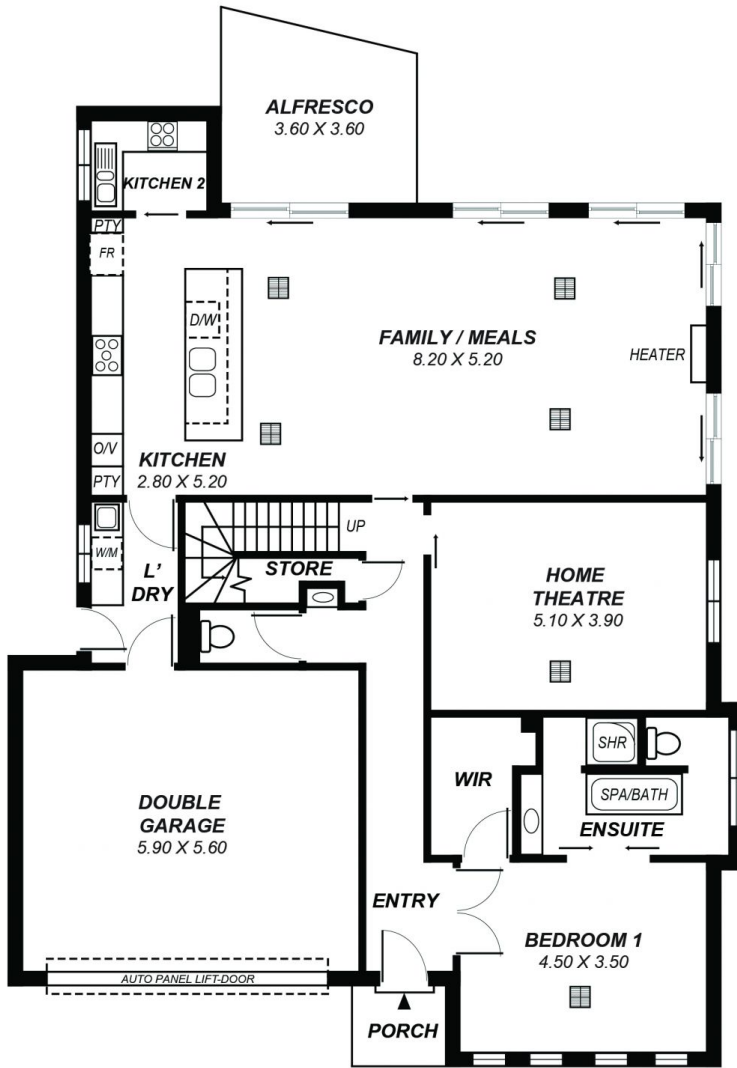
LOCATION, SIZE AND THE BEST IN QUALITY. WHEN THE CURRENT OWNERS BUILT THIS HOME THEY PUT A LOT OF THOUGHT INTO THE OVERALL DESIGN AND SPARED NO EXPENSE. THE MOMENT YOU WALK INTO THE HOME YOU APPRECIATE THIS LUXURIOUS AND EXTREMELY SPECIAL HOME.

**Land Size** : 353 sqm  
**View** : <https://www.bruse.com.au/sale/sa/eastern-suburbs/magill/residential/house/5551482>

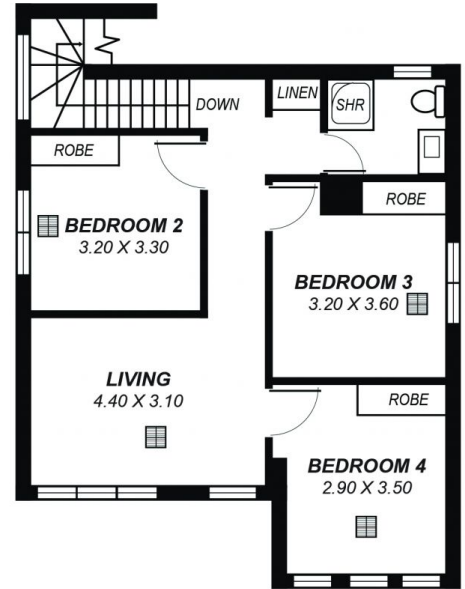
THE MAIN LIVING AREA IS ABSOLUTELY STUNNING COMPLIMENTED BY AN ABUNDANCE OF NATURAL LIGHT AND EXTRA HIGH 3M CEILINGS. THE KITCHEN IS A MASTER PIECE COMPLETE WITH BEAUTIFUL SOLID GRANITE BENCH TOPS AND SO MUCH STORAGE. THE ADJACENT WALK IN LARDER IS MORE LIKE A SECOND KITCHEN COMPLETE WITH A SECOND OVEN, COOKTOP AND SECOND SINK. FANTASTIC!



**Theon Bruse**  
**08 8431 8181**

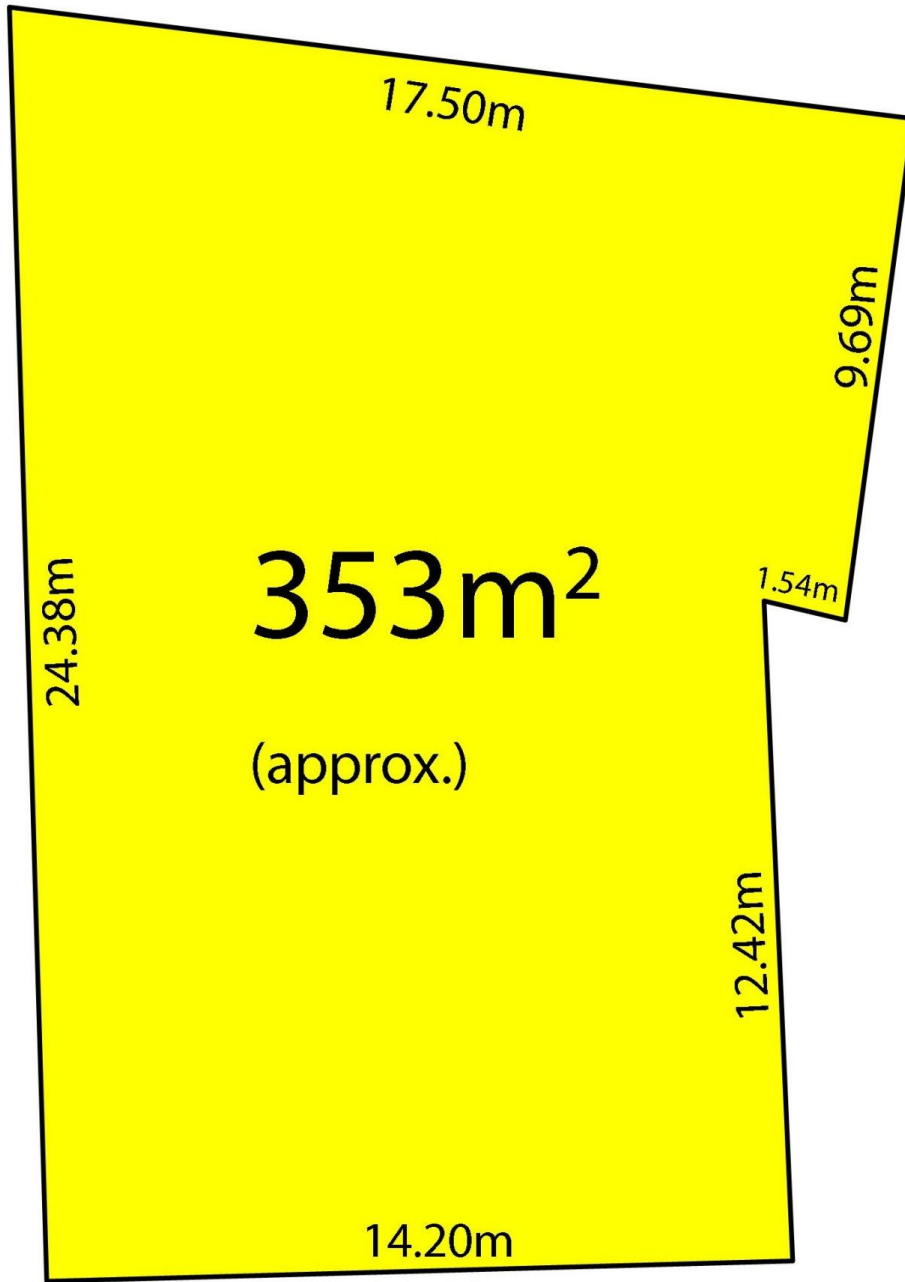


**GROUND FLOOR**



**FIRST FLOOR**

*This drawing is for illustration purposes only .  
All measurements are approximate and details intended  
to be relied upon should be independently verified.*



NEWMAN STREET