

**3 Bruce Avenue ROSTREVOR SA**

3 1 2

BUYERS WILL ABSOLUTELY LOVE THIS LOCATION. BRUCE AVENUE IS A QUIET NO THROUGH AVENUE WITH A LOVELY PARK AND PLAYGROUND. IT HAS A WARM FAMILY FRIENDLY FEEL.

**Land Size** : 610 sqm  
**View** : <https://www.bruse.com.au/sale/sa/eastern-suburbs/rostrom/residential/house/5551483>

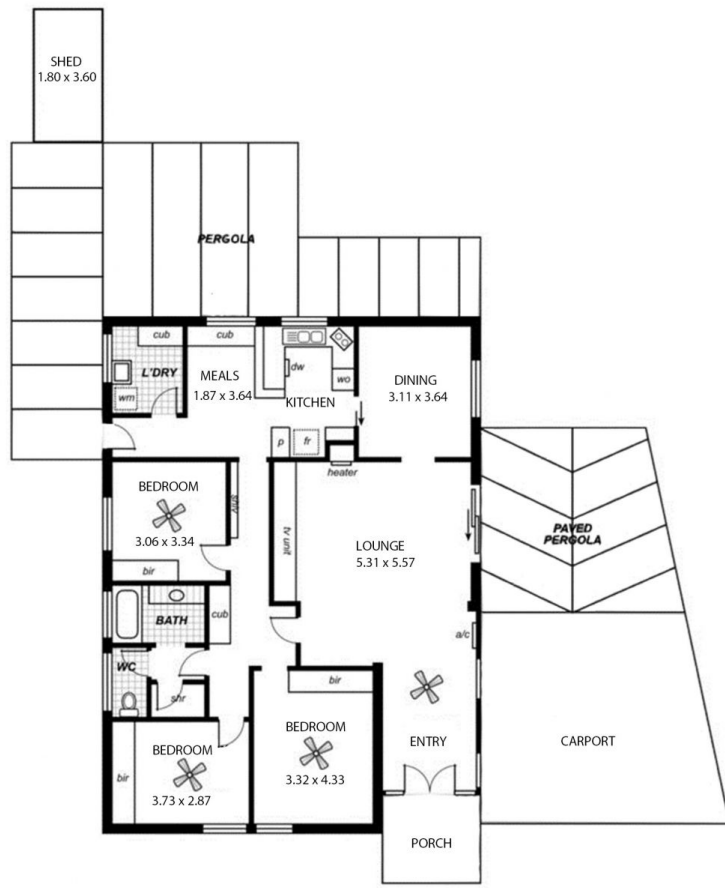
THE GENEROUS ALLOTMENT OF LAND IS APPROXIMATELY 610M2 IN SIZE WITH A VERY WIDE 21.34M FRONTAGE, SO A PROPERTY THAT WILL SEE GOOD CAPITAL GROWTH BECAUSE OF THIS.

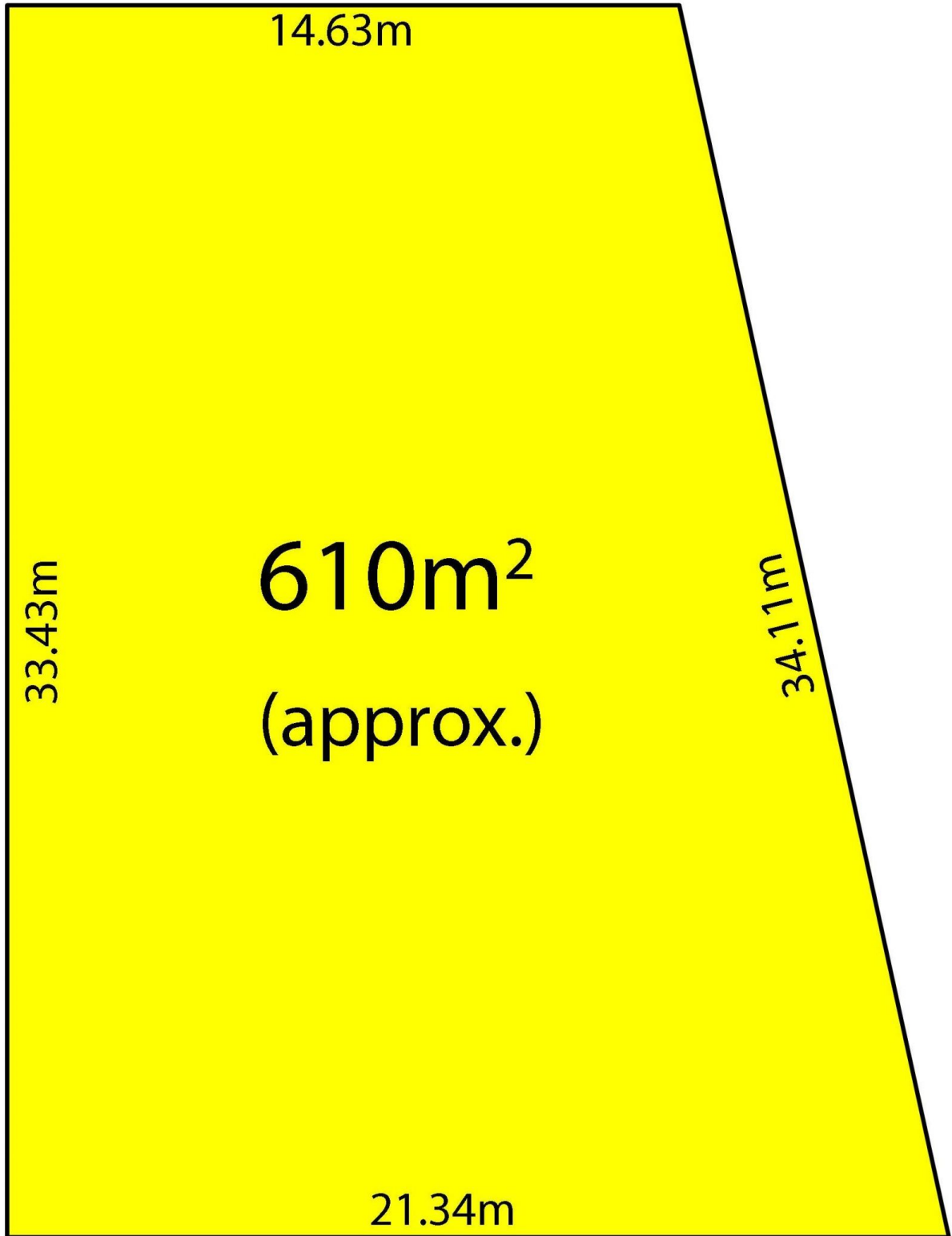
THE HOME ITSELF IS SPACIOUS AND FEATURES LOVELY ARCHITECTURAL ELEMENTS WITH A THOUGHTFUL DESIGN TO SUIT FAMILY LIVING. READY TO MOVE INTO AS IS BUT ALSO WITH POTENTIAL TO ADD VALUE.



**Theon Bruse**  
**08 8431 8181**

- Generous 21.34m frontage.





**BRUCE AVENUE**