



36 Gleneagles Road MOUNT OSMOND SA

4 2 2

A PIECE OF PARADISE. COUNTRY AIR. PEACEFUL LIFESTYLE ON 1460M2. BACKING ON TO MOUNT OSMOND GOLF COURSE. MOVE IN AND ENJOY THE LIFESTYLE.

View : <https://www.bruse.com.au/sale/sa/eastern-suburbs/mount-osmond/residential/house/5551523>

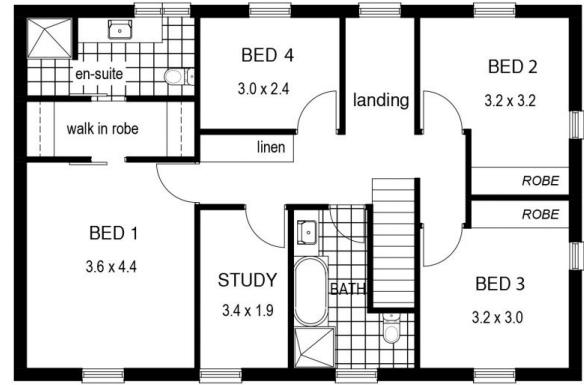
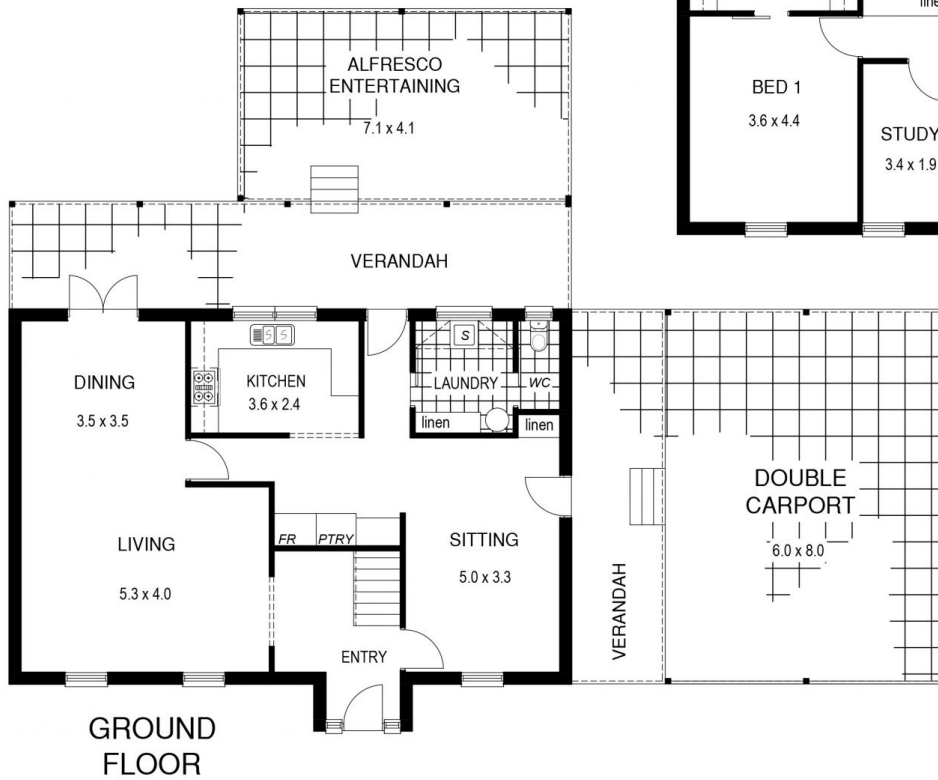
Stunning hills views.

2 generous living areas, BOTH FORMAL AND INFORMAL. Excellent upgraded kitchen. 4 generous bedrooms plus separate study, main bedroom with ensuite and walk in robe. Just move in, live and enjoy a wonderful life in this amazing family home.



Bevan Bruse
08 8431 8181

The home is very well presented and offers excellent accommodation for lifestyle family living. The home also includes a very generous outdoor living area and has excellent garden areas on separate terraces all adjoining



DOUBLE CARPORT

6.0 x 8.0

MOUNT OSMOND GOLF COURSE

30.50m

1460m²

(approx.)

48.51m

47.26m

30.48m

GLENEAGLES ROAD