

20A-20B Thomas Avenue ST MORRIS SA

3  2  2 

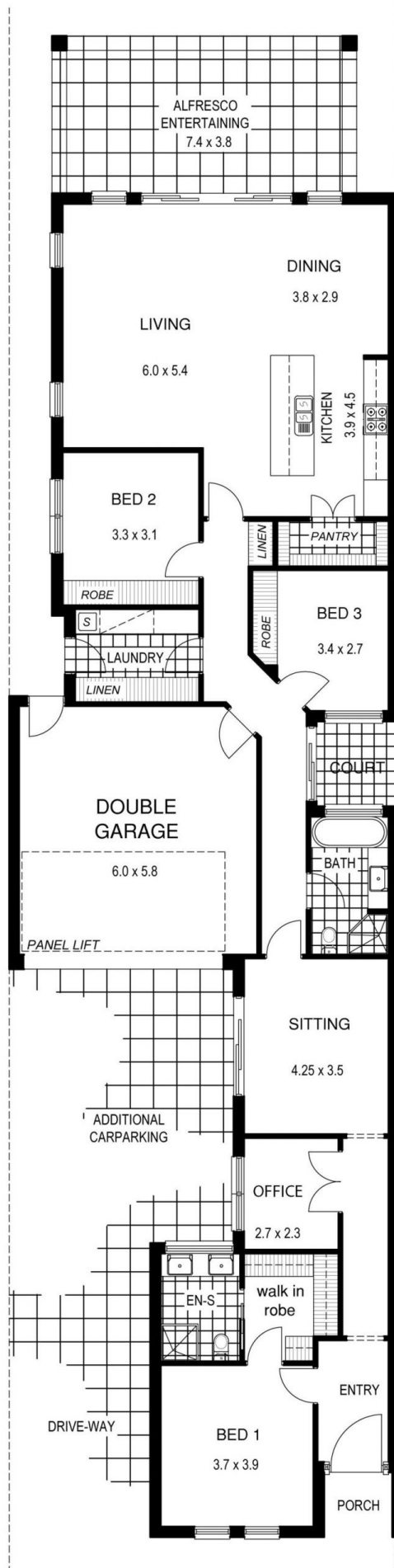
These new homes are just built right! Set over one level and with over 250m2 of house size, they have been designed to suit buyers from all walks of life. The quality is nothing but the best.

Land Size : 460 sqm
View : <https://www.bruse.com.au/sale/sa/eastern-suburbs/st-morris/residential/house/5551557>

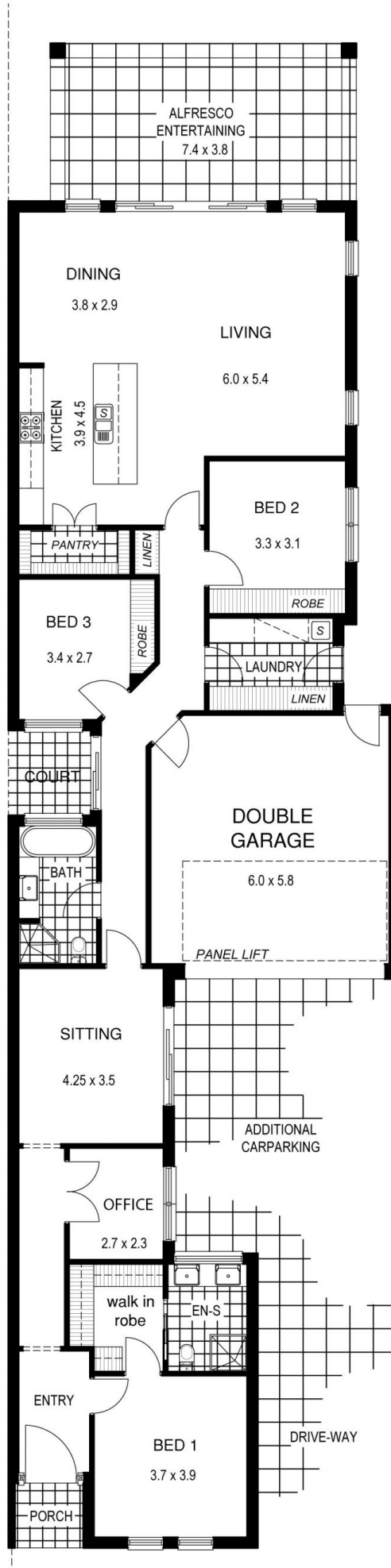
- 3m high ceilings.
- Character villa style facades with beautiful stone work.
- Double lock up garage plus additional parking for visitors.
- Main bedroom suite with fully fitted out walk in robe and a 6 star hotel quality ensuite.
- Separate home office, possible 4th bedroom.
- 2 other bedrooms with built in robes.
- Formal sitting room.
- Huge open plan living area flowing out to the external entertaining spaces.
- Spectacular kitchen complete with walk in pantry, 900mm Smeg oven & gas cooktop.



Theon Bruse
08 8431 8181



AREA	METER SQUARE
RESIDENCE 1	
LIVING	183.18
GARAGE	36.93
ALFRESCO	27.91
VERANDAH	2.62
TOTAL	250.64
LAND	460.00



AREA	METER SQUARE
RESIDENCE 2	
LIVING	183.18
GARAGE	36.93
ALFRESCO	27.91
VERANDAH	2.62
TOTAL	250.64
LAND	460.00