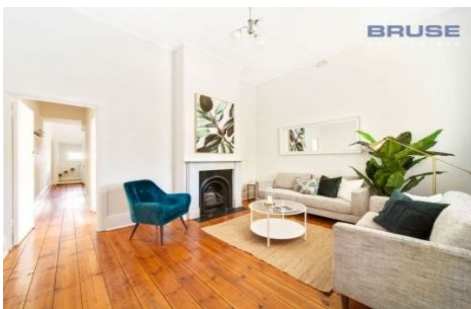


NEW PRICE \$520,000



24 Henry Street PAYNEHAM SA

3 2 1

THIS IS A GREAT OPPORTUNITY IN A PRIME SPOT IN SOUGHT AFTER PAYNEHAM. DO NOT MISS IT.

View : <https://www.bruse.com.au/sale/sa/eastern-suburbs/payneham/residential/house/5551576>

Full of character with modern lifestyle living. Just move in, live and enjoy. This low maintenance easy care home will suit many buyers seeking a home with character and the charm of cottage style living.

The home includes a generous living room to the front of the residence and leading to a separate dining room or a 3rd bedroom.



Bevan Bruse
08 8431 8181

The kitchen facility is centrally located and includes quality fixtures and fittings and ample cupboard and bench space. This area opens out to the laundry and separate lower level bathroom, with further access out to the outdoor living area.

Carport
5.2m x 2.6m

Gate
Timber Decking & Planter Boxes

Verandah

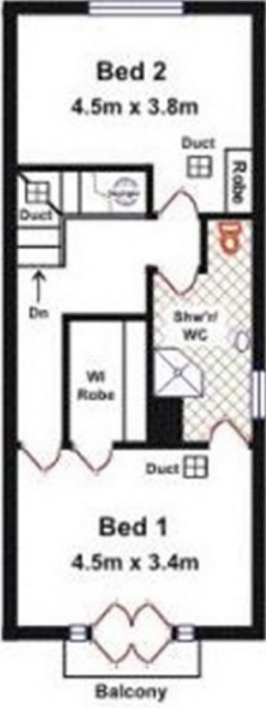
Ldry Bath

Kitchen
Up

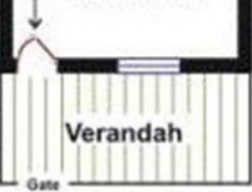
Dine/Bed 3
3.2m x 3.7m

Lounge
4.3m x 3.7m
A/C

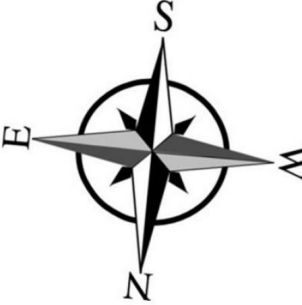
Verandah
Gate



Upper Floor



Ground Floor





HENRY STREET

