

**9A John Avenue TRANMERE SA**

4 2 2

This home is an ideal family home complete with an entrance hallway leading to a large central sitting room with direct access to a courtyard undercover area.

**View** : <https://www.bruse.com.au/sale/sa/eastern-suburbs/tranmere/residential/house/5551584>

The home further leads through to the main bedroom on the lower level with ensuite and a large walk in robe and access also to the private courtyard.

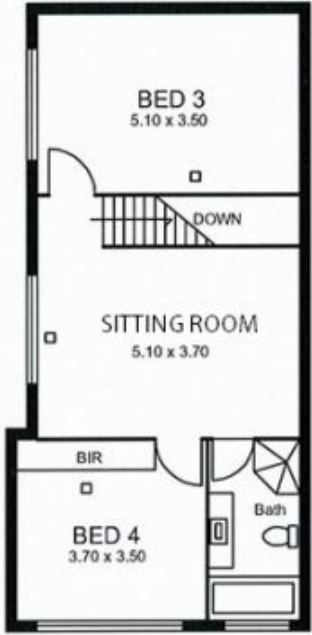
On the lower level there is also a second bedroom or a study if so desired and also then leading through to the powder room and laundry. The stunning open plan living, dining and kitchen of extremely generous proportions has north facing windows. This is a great room for entertaining.



**Bevan Bruse**  
**08 8431 8181**

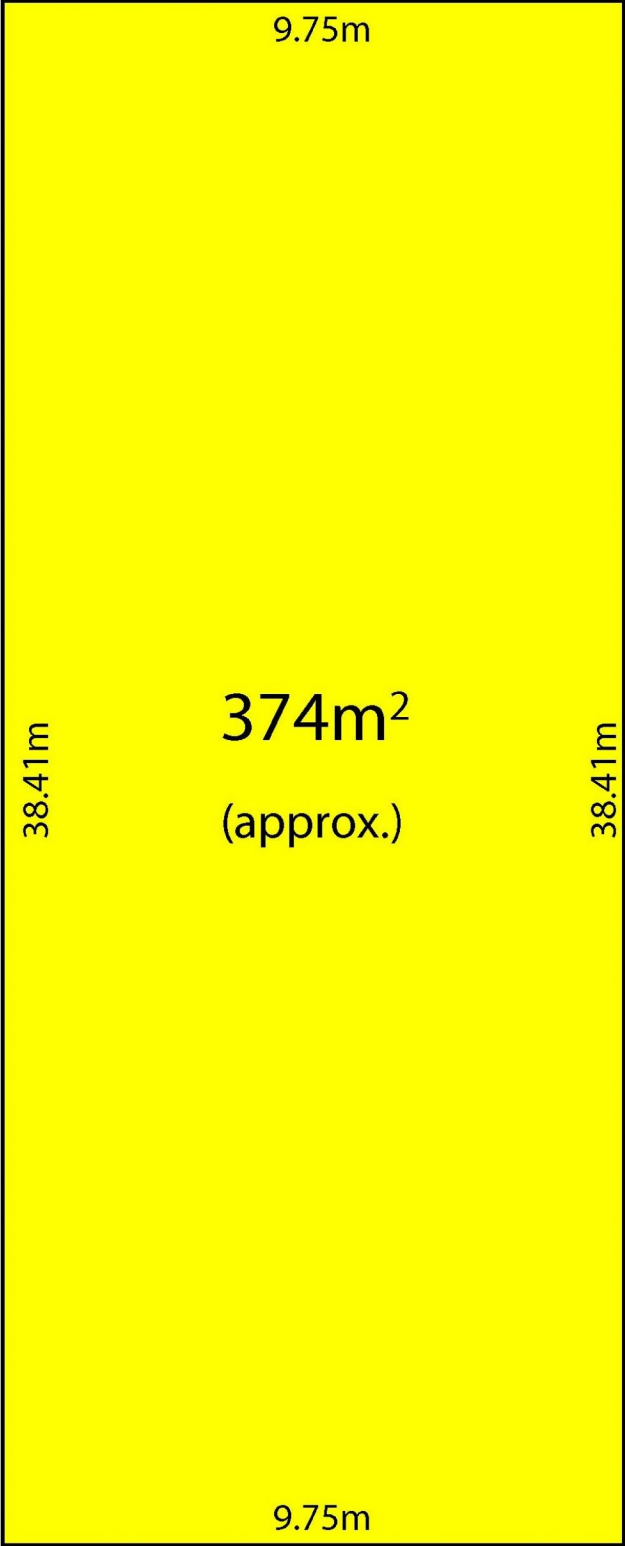
The kitchen of the home has a generous amount of cupboard and bench space and quality fixtures and fittings. This living room has direct access out to an amazing large

AREAS m2	
Living Gnd Floor	154.79
Garage	39.98
Porch	5.98
Living Upper Level	65.75
TOTAL m2	266.50



UPPER LEVEL





JOHN AVENUE

