



7A Beech Avenue CAMPBELLTOWN SA

4 3 1

267m2 OF TOTAL INTERNAL HOUSE! THIS HOME IS VERY LARGE.

View : <https://www.bruse.com.au/sale/sa/north-north-east-suburbs/campbelltown/residential/house/5551586>

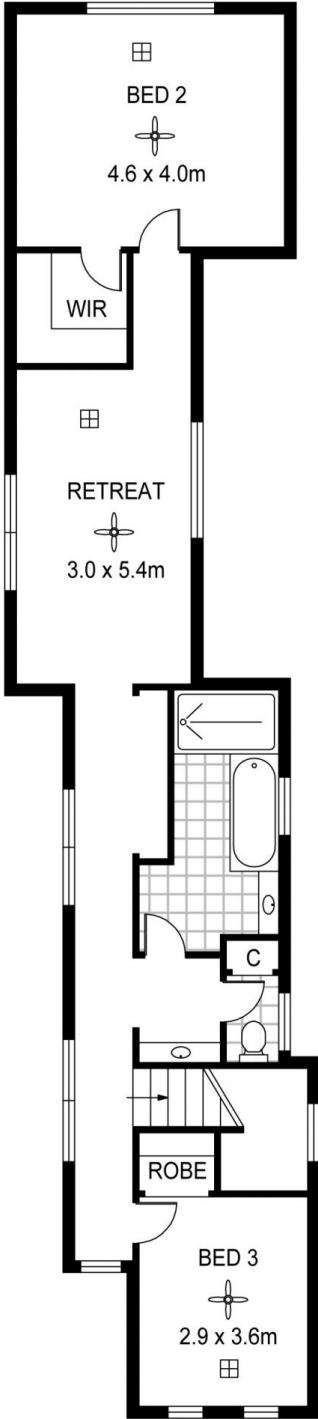
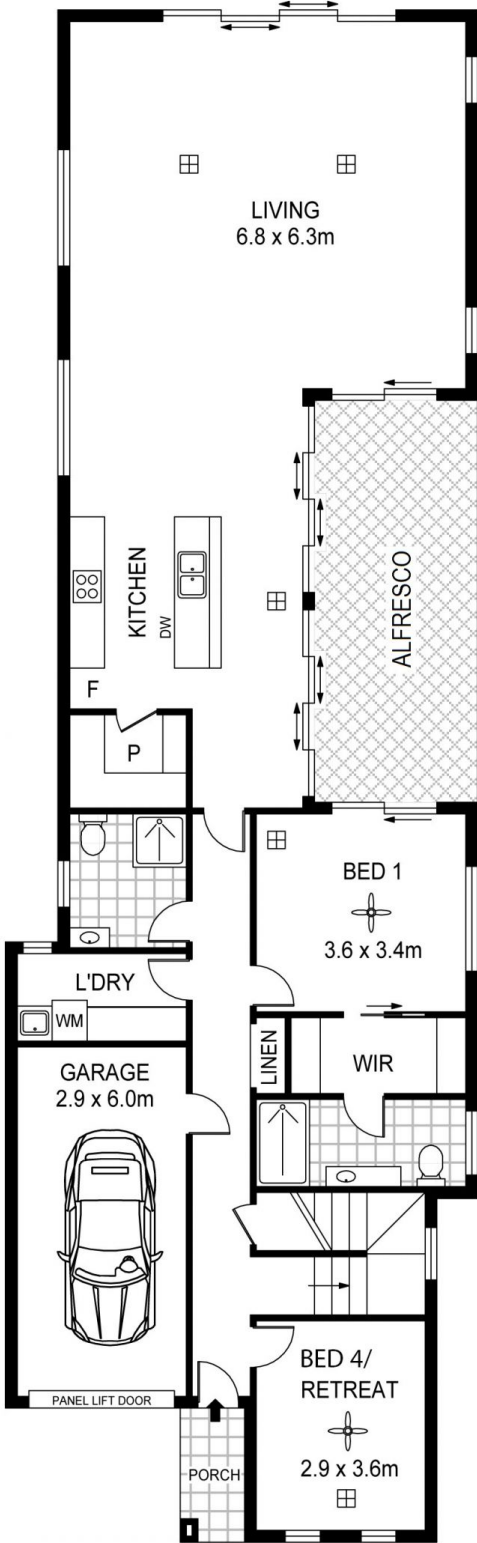
MAIN BEDROOM SUITE ON THE LOWER LEVEL.
PLUS GUEST BEDROOM AND 3RD BATHROOM ON THE LOWER LEVEL.
BIG ROOMS THROUGHOUT!
ONLY A 2 MINUTE WALK TO THE HIGHLY POPULAR EAST MARDEN PRIMARY SCHOOL.
STAND ALONE HOUSE ON SEPARATE TORRENS TITLE.

From the front the home looks trendy and inside it's amazing. Saturated in natural light thanks to the abundance of windows and sliding doors. This home has a splendid feeling.



Theon Bruse
08 8431 8181

RWT



GROUND FLOOR

FIRST FLOOR

	Area	M ²
Living	247	
Garage	20	
Alfresco	20	
Total	287	



Scale in metres. Indicative only. Dimensions are approximate. All information contained herein is gathered from sources we believe to be reliable. However we cannot guarantee its accuracy and interested persons should rely on their own enquiries