

22 Morgan Street WEST HINDMARSH SA

4 2 2

THE ATTENTION TO DETAIL THAT HAS BEEN PUT INTO THE RESTORATION OF THE ORIGINAL STONE FRONTED VILLA TO THE NEW EXTENSION TRULY NEEDS TO BE SEEN TO BE APPRECIATED. IN MY OWN OPINION ... IT'S AWESOME.

Land Size : 581 sqm
View : <https://www.bruse.com.au/sale/sa/western-beachside-suburbs/west-hindmarsh/residential/house/5551593>

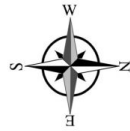
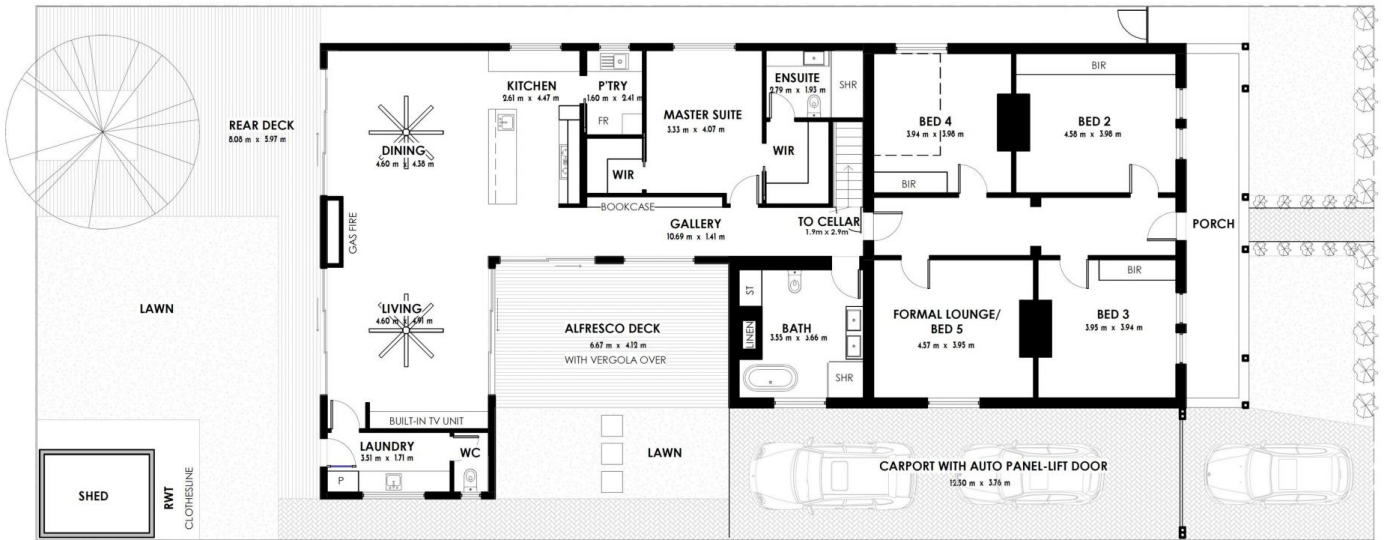
EVERY ANGLE HAS A POINT OF ARCHITECTURAL DIFFERENCE AND THE QUALITY OF INTERIOR DESIGN AND FINISHES ARE SUPERB.

EXTREMELY SPACIOUS THROUGHOUT WITH ALMOST 350M2 OF TOTAL HOUSE SIZE.

- Luxurious formal lounge room (or possible 5th bedroom)
- Stunning main bedroom suite complete with a beautiful ensuite bathroom and 2 separate walk in robes
- Bedrooms 2, 3 and 4 are all king size rooms complete



Theon Bruse
08 8431 8181



AREAS	
Name	Area
Living	241.46 m ²
Alfresco deck	27.46 m ²
Front verandah	18.68 m ²
Rear deck	58.24 m ²
Carport	47.57 m ²
Cellar	5.51 m ²
Total	398.92 m ²

FOR ILLUSTRATIVE PURPOSES ONLY. ALL MEASUREMENTS ARE APPROXIMATE