



13 Celadon Court WYNN VALE SA

3 1 2

THIS IS A BRILLIANT OPPORTUNITY IN A GREAT LOCATION. 250m2 OF HOME, WHICH MAKES THIS AN AMAZING OFFERING AND IT CERTAINLY WILL BE VERY SOUGHT AFTER BY MANY BUYERS.

View : <https://www.bruse.com.au/sale/sa/north-north-east-suburbs/wynn-vale/residential/house/5551598>

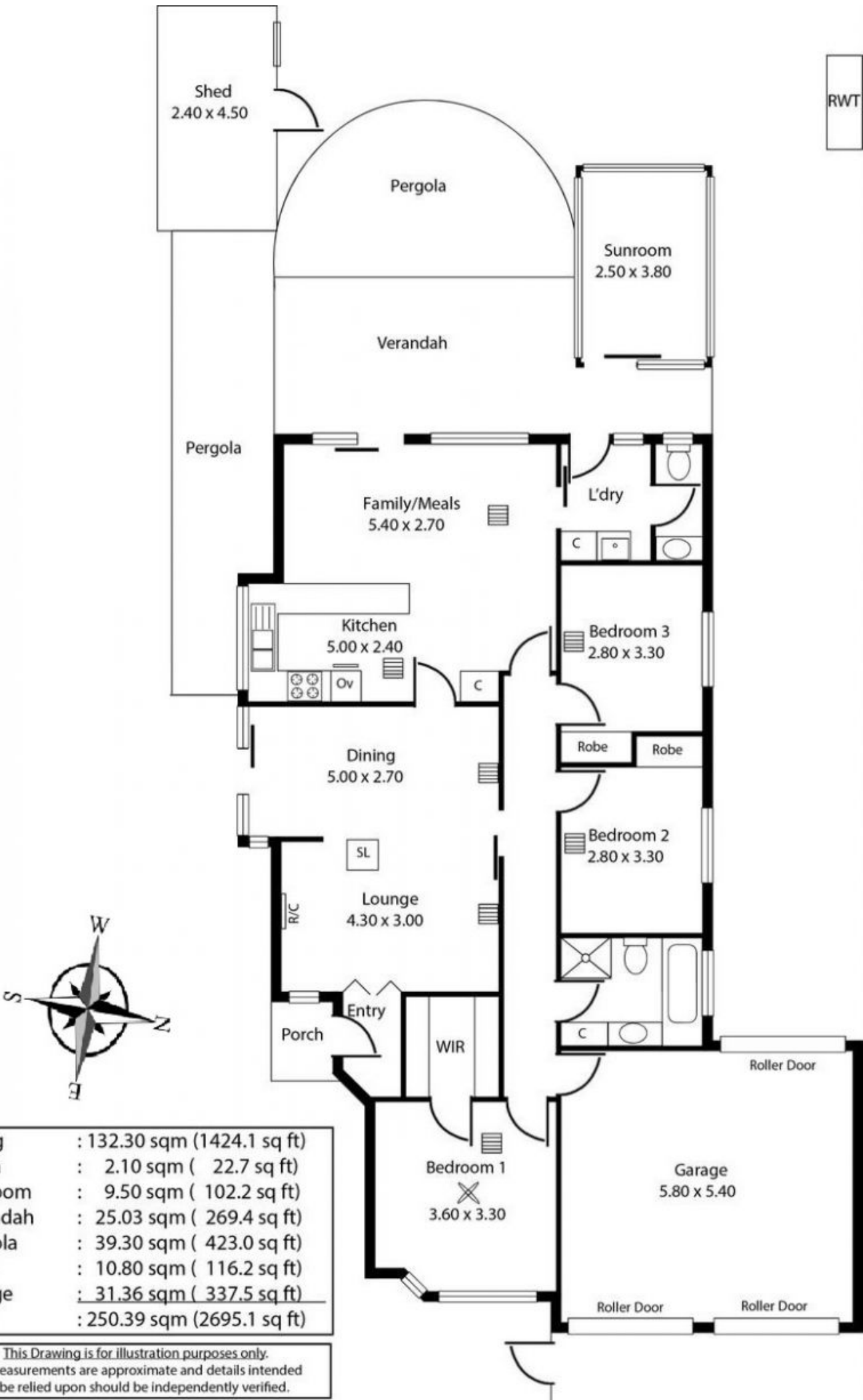
This home has an entrance hallway that leads to the main bedroom suite complete with a large walk in robe adjacent to the main bathroom facility.

The home also includes a large formal sitting room, formal dining room and to the rear of the home an open plan living, dining and kitchen area of very generous proportions. This area is adjacent to the well-appointed kitchen facility and also has direct access out to the absolutely spectacular outdoor living area. This area includes pergolas, verandas and an external sun room or gym room.



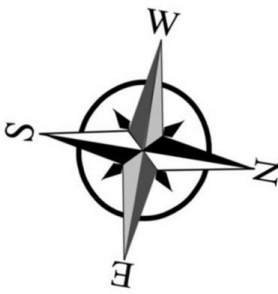
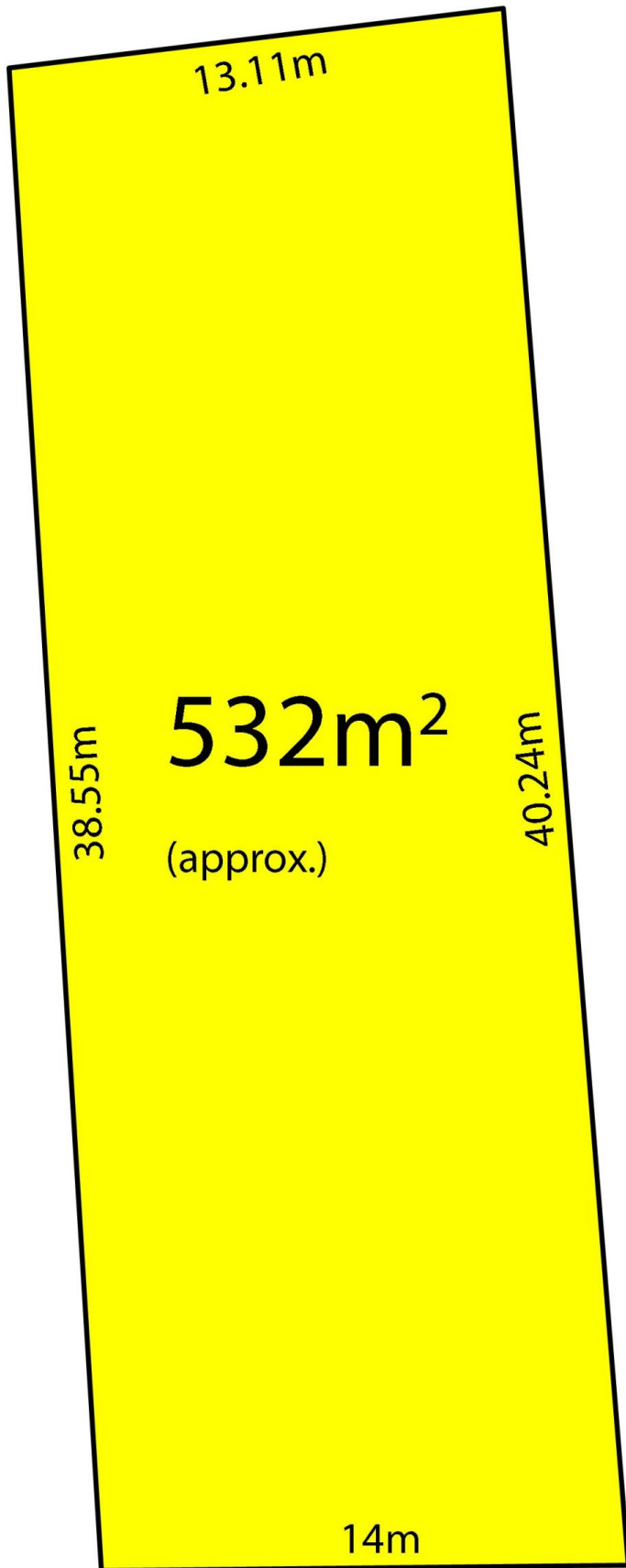
Bevan Bruse
08 8431 8181

RWT



Living	: 132.30 sqm (1424.1 sq ft)
Porch	: 2.10 sqm (22.7 sq ft)
Sunroom	: 9.50 sqm (102.2 sq ft)
Verandah	: 25.03 sqm (269.4 sq ft)
Pergola	: 39.30 sqm (423.0 sq ft)
Shed	: 10.80 sqm (116.2 sq ft)
Garage	: 31.36 sqm (337.5 sq ft)
Total	: 250.39 sqm (2695.1 sq ft)

This Drawing is for illustration purposes only.
All measurements are approximate and details intended to be relied upon should be independently verified.



CELADON COURT