



**1B Rita Avenue ROSTREVOR SA**

3 2 2

You will love the location of this new age home. Set on a lovely tree lined street amongst quality homes and only a short walk to the local park and play ground. The home is also very close to the Newton Shopping Complex.

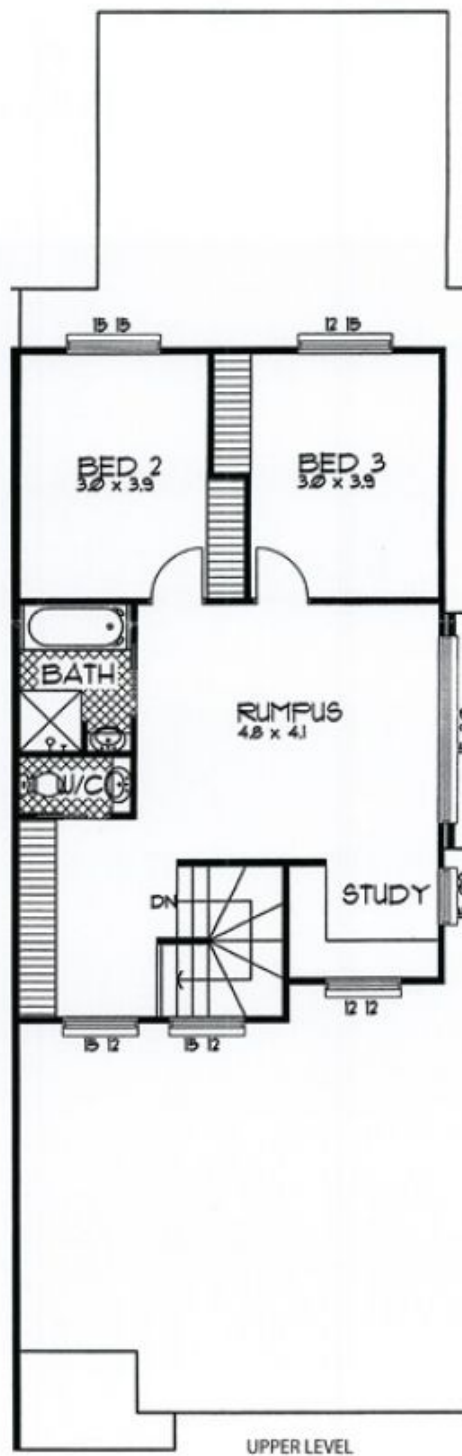
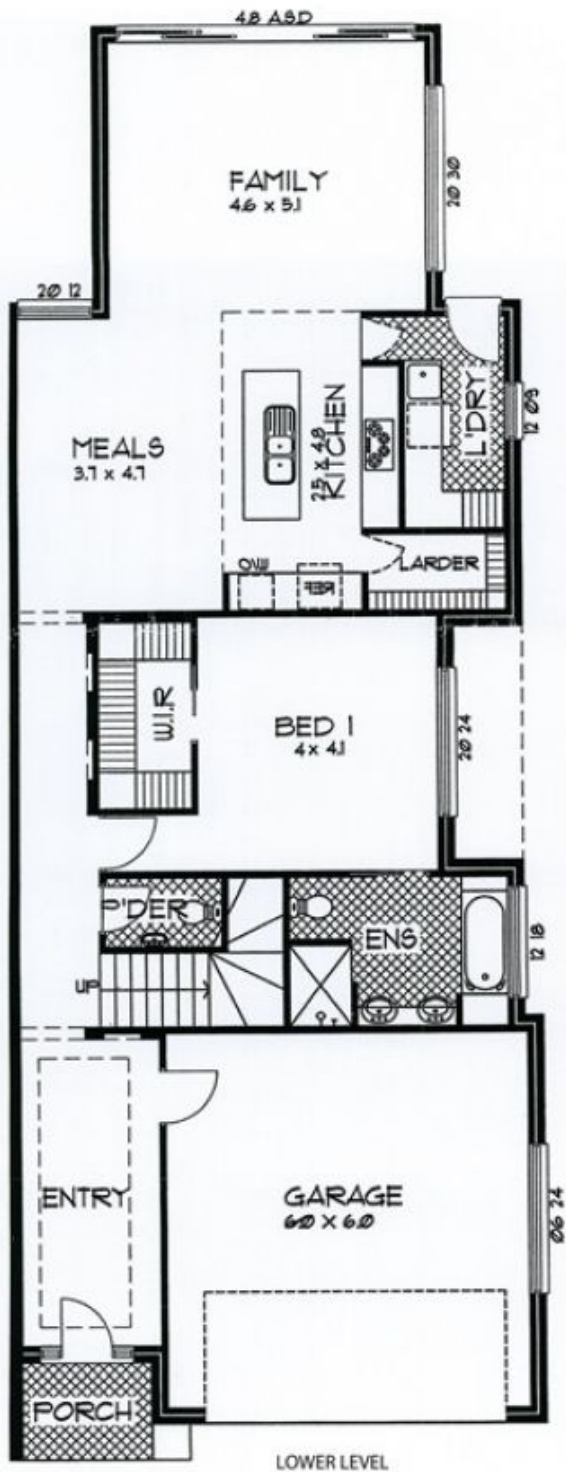
**Land Size** : 376 sqm  
**View** : <https://www.bruse.com.au/sale/sa/eastern-suburbs/rostromv/residential/house/5551606>

VERY SPACIOUS THROUGHOUT.  
ALL BEDROOMS ARE KING SIZE.  
STUNNING MAIN BEDROOM SUITE ON THE LOWER LEVEL.  
BIG BACK YARD.  
DOUBLE GARAGE.

The home has been finished to a very high specification including Miele appliances, solid stone bench tops throughout, brand new carpets and beautiful window curtains. It truly is impressive.



**Theon Bruse**  
**08 8431 8181**



### RESIDENCE 1B

AREAS:	
L.F. LIVING:	126.66 SQM.
UP. LIVING:	74.14 SQM.
GARAGE	42.25 SQM.
PORCH	3.62 SQM.
<b>TOTAL:</b>	<b>246.67 SQM.</b>

