

31 Wisteria Grove FELIXSTOW SA

3 2 1

Nestled in an excellent location amongst other high quality homes, Wisteria Grove welcomes you in with a sense of community and attractive street appeal. Perfectly positioned near the end of the quiet cul-de-sac, the home offers an attractive facade with established gardens.

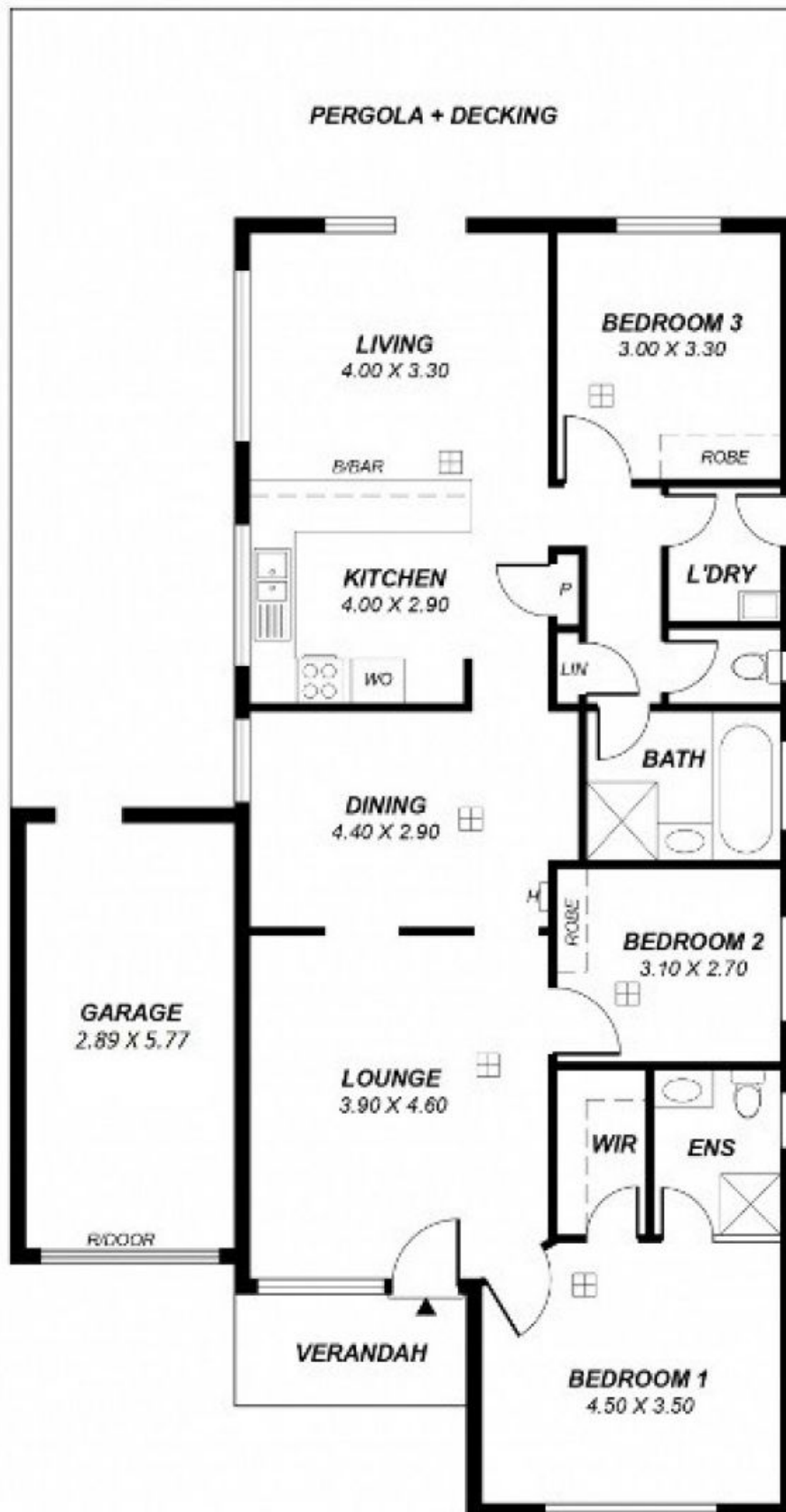
Land Size : 372 sqm
View : <https://www.bruse.com.au/sale/sa/eastern-s-uburbs/felixstow/residential/house/5551624>

The location is fantastic! Only 10 minutes to the city and close to all the conveniences of great shopping, restaurants, public transport and a choice of schools. Zoned for East Marden Primary School and Charles Campbell College. Linear Park, Payneham Swimming Pool and the library are also all within a short walking distance.



Toby Shipway
8413 8181

Built in 2002, this north facing home features generous living complimented with 2.7m high ceilings and low maintenance tiled floors throughout. There are two living areas, formal dining and 3 bedrooms, the master with walk



*This drawing is for illustration purposes only.
 All measurements are approximate and details intended
 to be relied upon should be independently verified.*

Area	m ²
Living	121
Verandah	8
Pergola / Decking	53
Garage	14
Total	196