



**524 Greenhill Road (Corner of Lancelot Avenue)  
HAZELWOOD PARK SA**

**3**  **1**  **2** 

A MARVELLOUS OPPORTUNITY TO LIVE IN A PARK LIFE SETTING WITH A CREEK RUNNING THROUGH THE PROPERTY GIVING A WONDERFUL FEELING OF LIVING IN A WONDERFUL GARDEN SETTING MAKING THIS PROPERTY A VERY UNIQUE OFFERING.

**Land Size** : 594 sqm  
**View** : <https://www.bruse.com.au/sale/sa/eastern-suburbs/hazelwood-park/residential/house/5551629>

The home includes a very large living area, separate kitchen and everyday meals area on the lower level. Laundry and w/c.

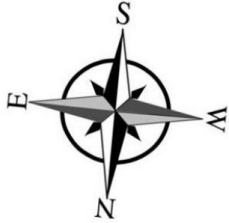
The upper level of the home includes 3 good size bedrooms, 1 bathroom and 2 balcony's overlooking Hazelwood Park, the attractive garden and creek setting of the residence.



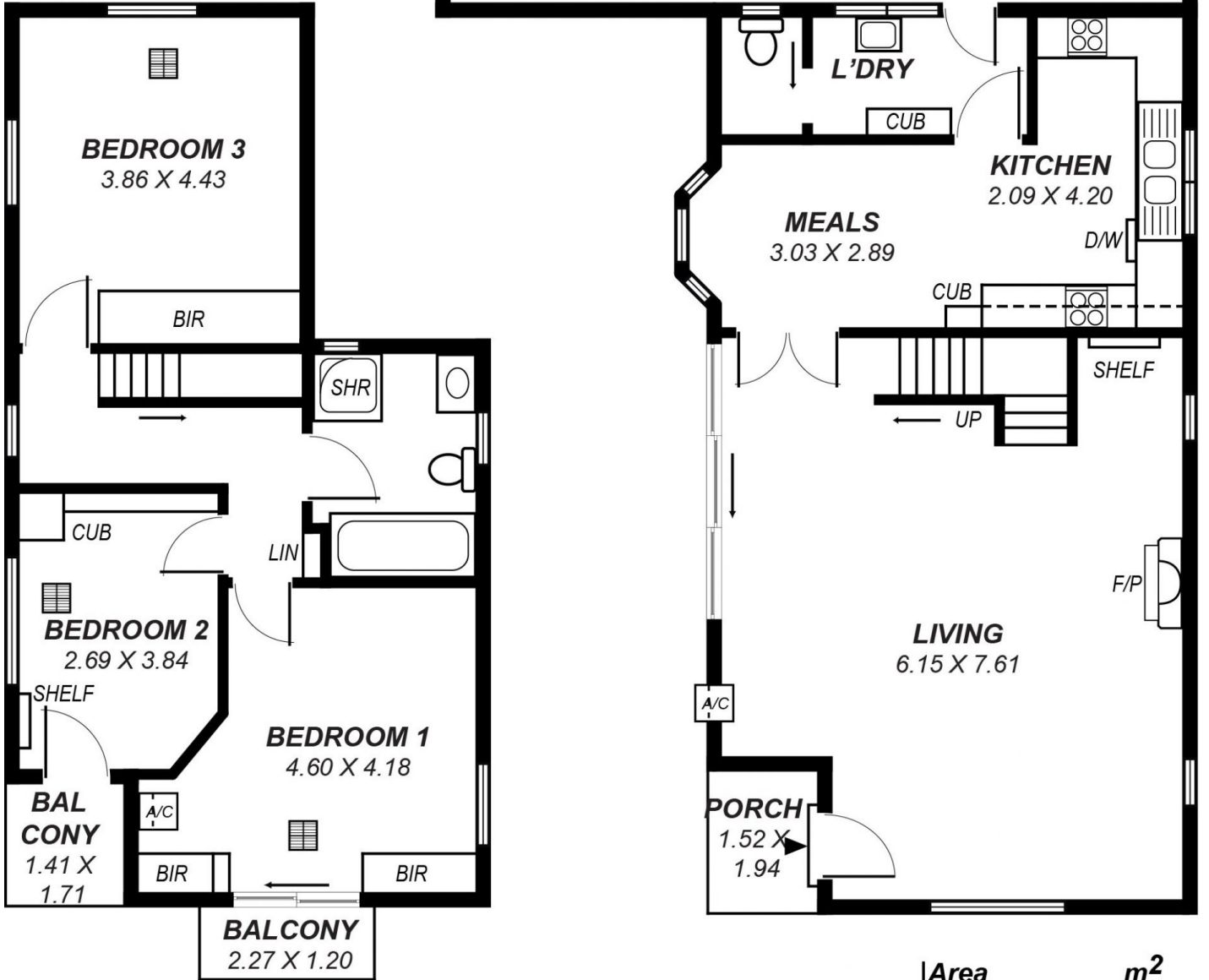
**Bevan Bruse**  
**08 8431 8181**

This is a home that you can move in live and enjoy a life as

**LOWER LEVEL**

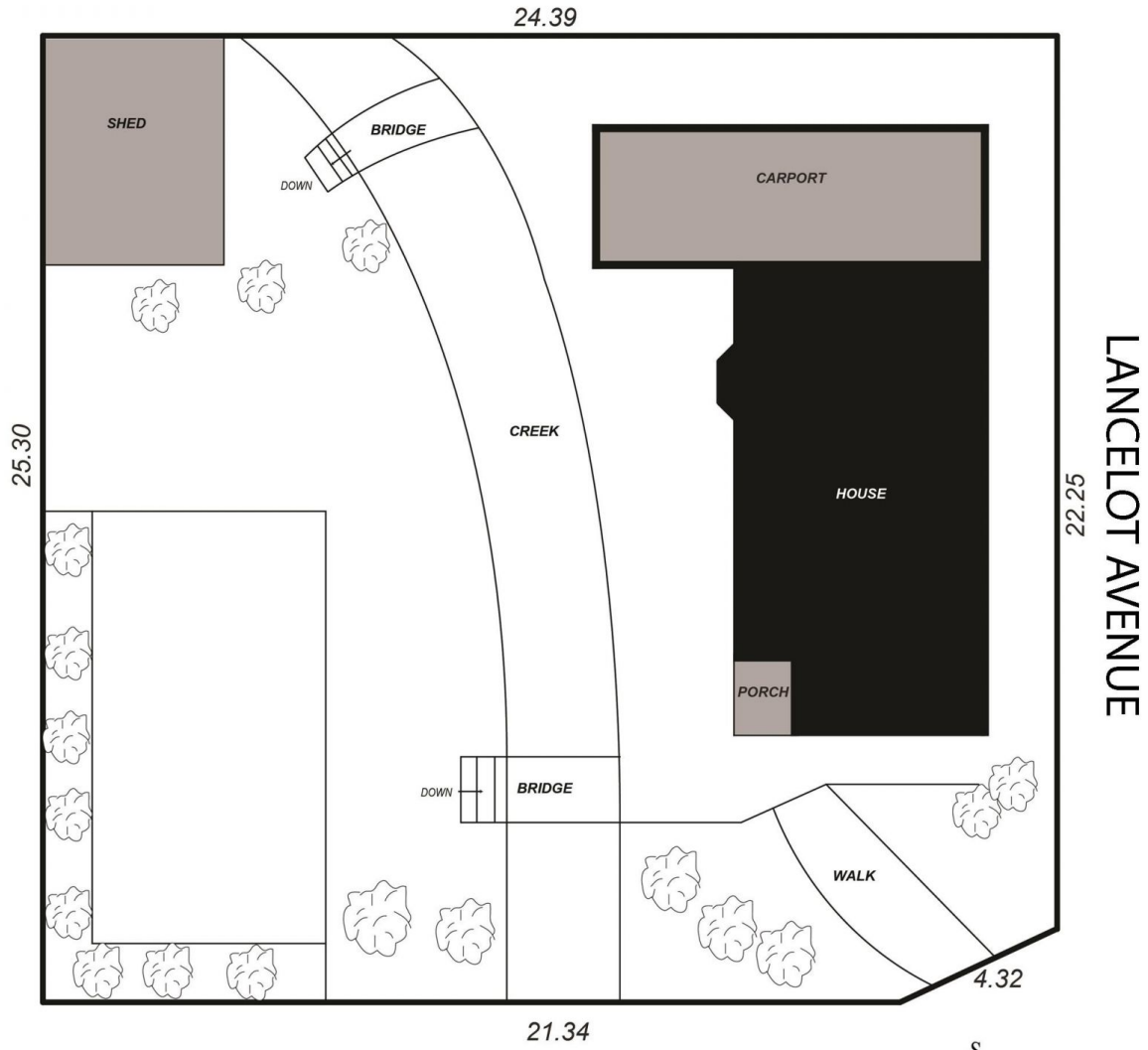


**UPPER LEVEL**



Area	m <sup>2</sup>
Lowerlevel:	68.80
Upperlevel:	62.17
Balcony:	5.14
Porch:	2.95
Carport:	34.00
<b>Total:</b>	<b>173.05</b>

*This drawing is for illustration purposes only .  
All measurements are approximate and details intended  
to be relied upon should be independently verified.*



*This drawing is for illustration purposes only .  
 All measurements are approximate and details intended  
 to be relied upon should be independently verified.*

**GREENHILL ROAD**

