




9 Coralie Street PLYMPTON SA

4  2  2 

This amazing opportunity includes a wonderful home of generous proportions and positioned in a beautiful street surrounded by other quality properties.

In the redevelopment section of Plympton this is a unique offering and will be sold very quickly.

The vendors of the home are only selling as they have now purchased another home in the eastern suburbs of Adelaide.

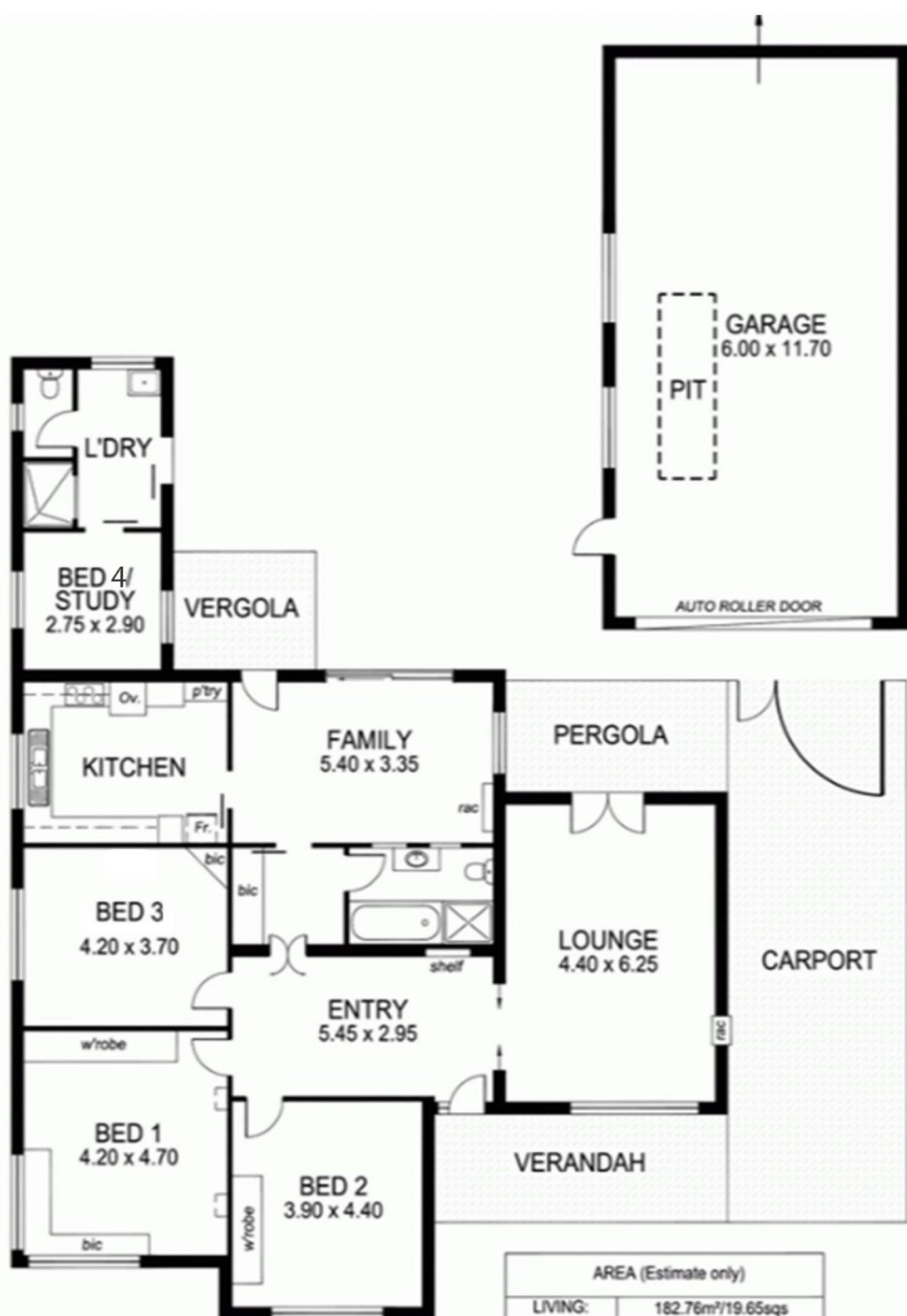
The home offers excellent accommodation for living or for rental purposes.

The home includes 2 generous living areas, 4 bedrooms, 2 bathrooms and excellent outdoor living area. 2 car carport and also a large garage facility 6.00m x 11.70m with a pit.

Land Size : 950 sqm
View : <https://www.bruse.com.au/sale/sa/south-south-east-suburbs/plympton/residential/house/5551642>



Bevan Bruse
08 8431 8181



This drawing is for illustration purposes only.
 All measurements are approximate only and information
 intended to be relied upon should be independently verified.

20.22m

950m²

(approx.)

46.45m

46.45m



20.22m

CORALIE STREET