

15 Shirley Avenue FELIXSTOW SA

3 1 1

Corner of Shirley Avenue and Fisher Street.

APPROXIMATELY 833m²

22.86 x 36.57m

NO EASEMENTS.

The site currently comprises a solid brick 3 bedroom home with 2 separate living areas and a separate rumpus room. Potential to rent the home out while gaining the relevant building approval from council.

Talk to council.

Talk to your builder.

This is a prime development site in an excellent location.

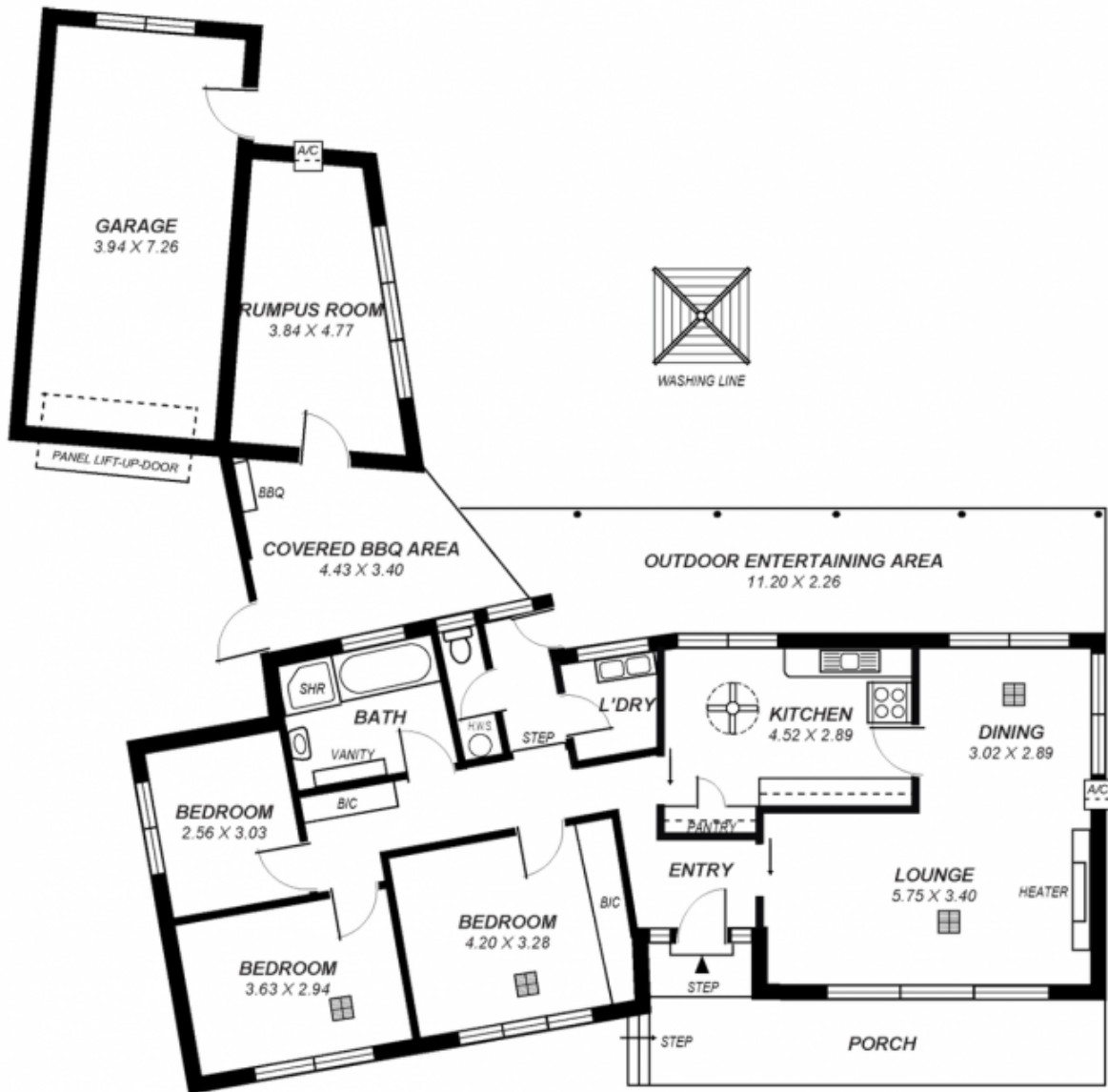
Information

Land Size : 833 sqm

View : <https://www.bruse.com.au/sale/sa/eastern-suburbs/felixstow/residential/house/5551651>



Theon Bruse
08 8431 8181



*This drawing is for illustration purposes only.
 All measurements are approximate and details intended
 to be relied upon should be independently verified.*