



**3B Swan Avenue ROSTREVOR SA**

4 2 2

2 WEEKS FROM COMPLETION.

Good size rear yard even room for a pool. Corner Allotment.

IN THE NEW CHAPEL ESTATE. THIS BRILLIANT LIFESTYLE HOME OFFERS DOUBLE LEVEL LIVING AT ITS BEST. 4 BEDROOMS, 2 LIVING AREAS, 2 BATHROOMS, 3 W/C'S. STUNNING DESIGNER DECOR AND HIGH END QUALITY DESIGNER FITTINGS.

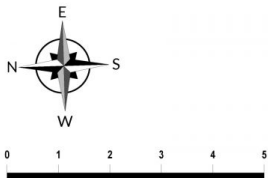
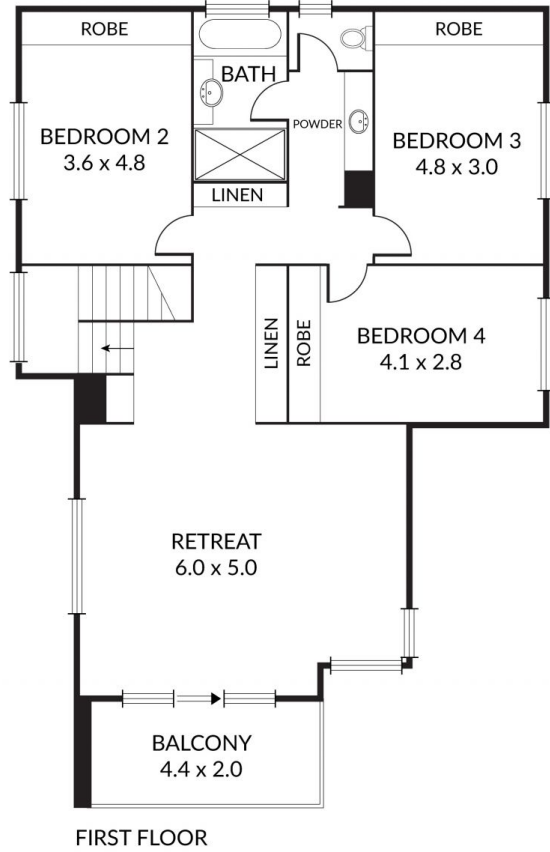
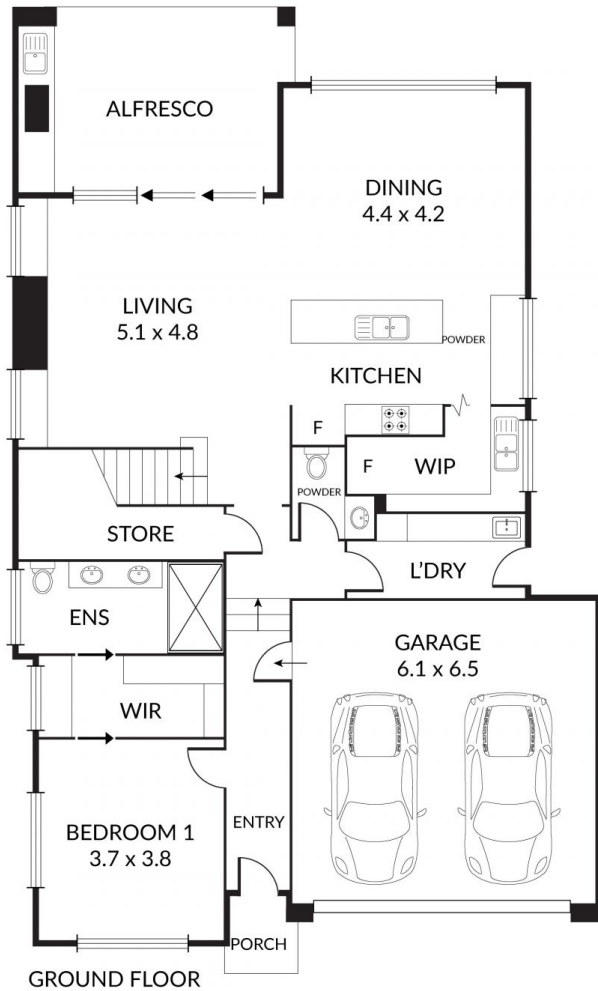
Well positioned on 361m<sup>2</sup> of land. Home size 306m<sup>2</sup>.

This amazing lifestyle home is a great family home with the main bedroom on the lower level with large walk in robe and brilliant ensuite with designer style double basins.

**Price** : \$ 826,000  
**Land Size** : 361 sqm  
**View** : <https://www.bruse.com.au/sale/sa/eastern-suburbs/rosvor/residential/house/5551656>



**Bevan Bruse**  
**08 8431 8181**



3B Swan Avenue

INTERNAL AREAS	239 M2
EXTERNAL AREAS	67 M2
TOTAL	306 M2

Scale in metres. Indicative only. Dimensions are approximate. All information contained herein is gathered from sources we believe to be reliable. However we cannot guarantee its accuracy and interested persons should rely on their own enquiries

