

4 Lancaster Avenue VALLEY VIEW SA

3  1  1 

On a good sized allotment 600m² (approx.), this home offers the opportunity to move in, live and enjoy a wonderful life in a home that offers excellent accommodation for family living.

This property is value for money and an opportunity to get into the wonderful location of Valley View at the right price.

The home comprises of three bedrooms, a large lounge, dining, kitchen.

THE HOME HAS SOLAR POWER.

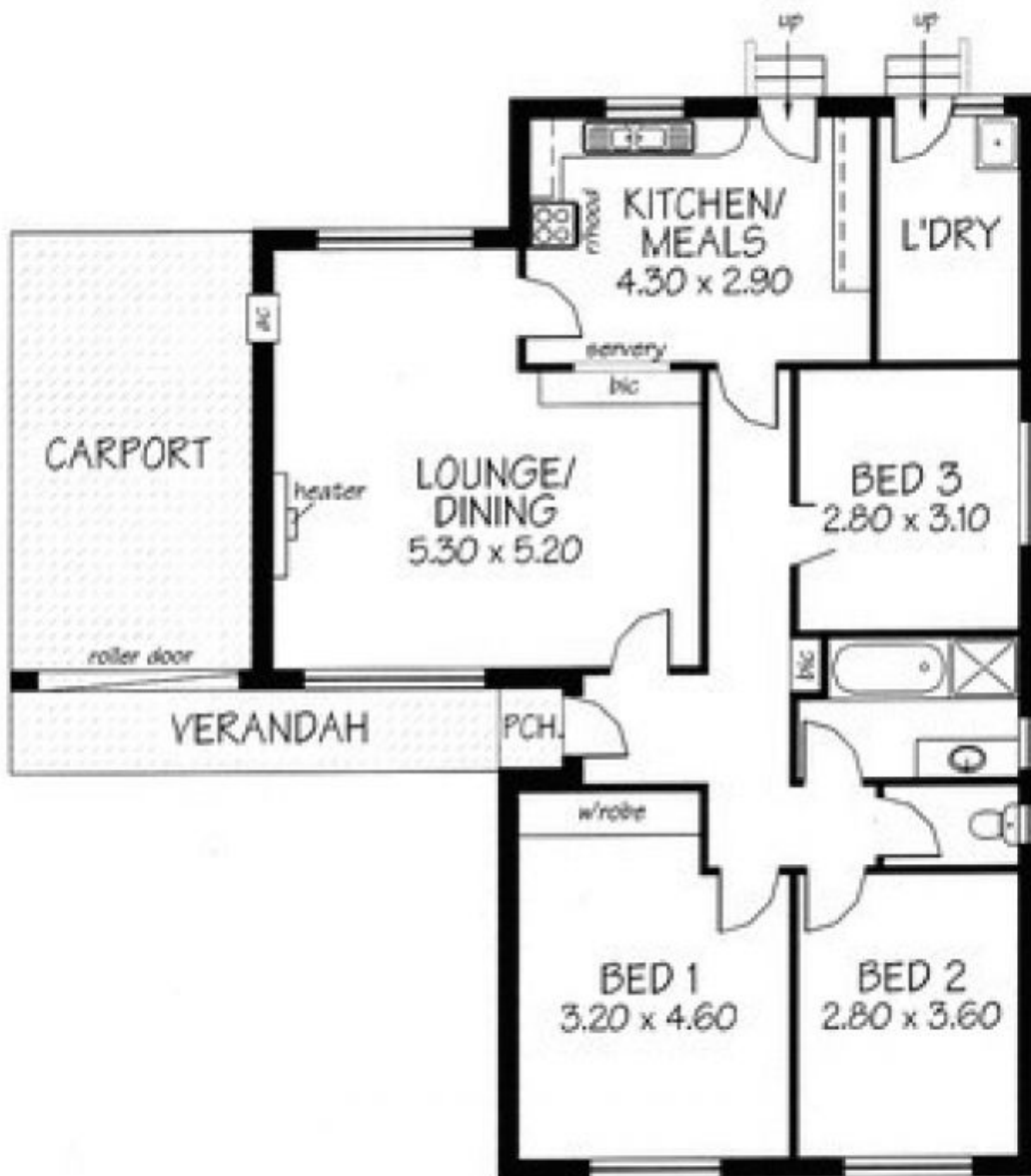
It's just a great home to move in, live and enjoy a wonderful life in. Don't miss it!

VENDOR POINTS OF INTEREST

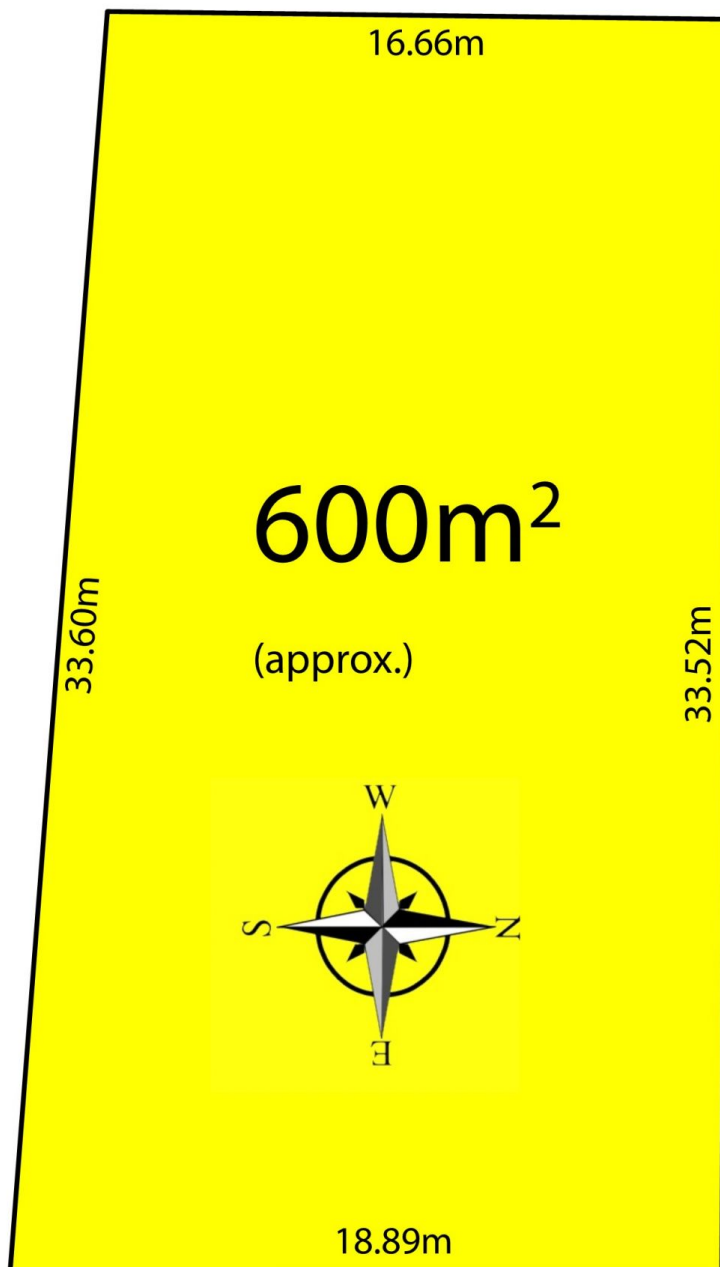
Land Size : 600 sqm
View : <https://www.bruse.com.au/sale/sa/north-north-east-suburbs/valley-view/residential/house/5551668>



Bevan Bruse
08 8431 8181



TOTAL AREA:	139.42m ² /14.99sqg
(Estimate only)	(incl. porch, verandah & carport.)



LANCASTER AVENUE