

12 Nalara Avenue ROSTREVOR SA

3 2 2

Wow, this bespoke home is super stylish with a cool contemporary edge. Design straight out of Vogue Living magazine.

View : <https://www.bruse.com.au/sale/sa/eastern-suburbs/rostrrevor/residential/house/5551674>

Set on a lovely tree lined street in highly sought after Rostrevor. Conveniently located close to Magill with the Foodland Shopping Centre only a short walk away.

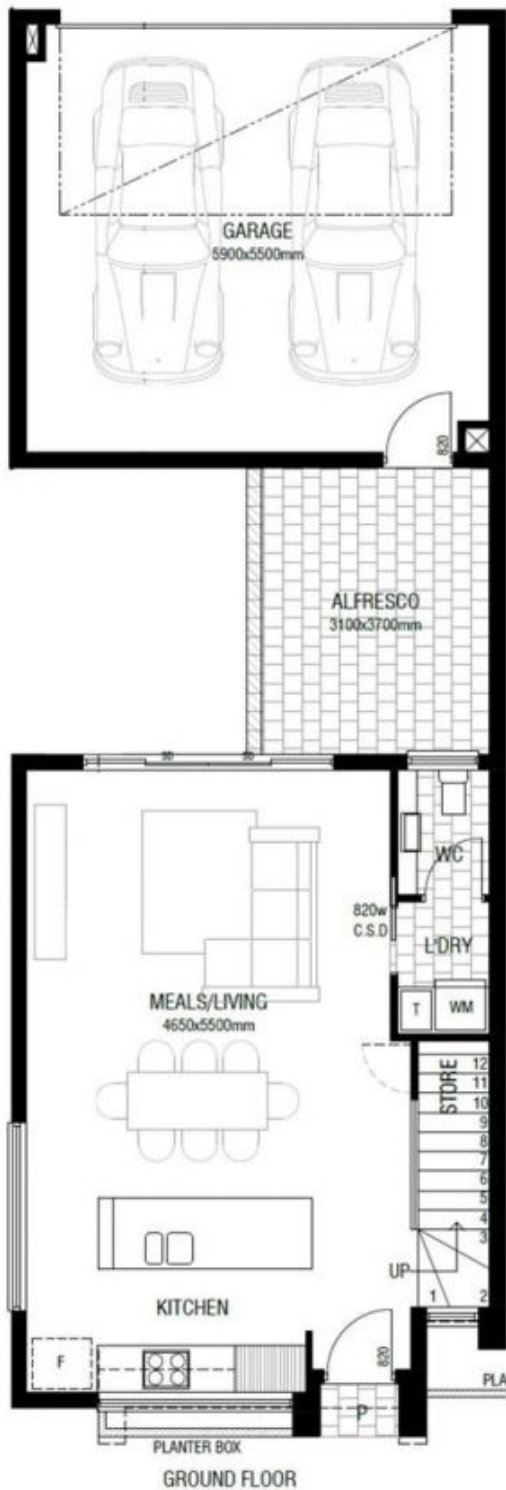
This home is street fronted with awesome views to the hills.

Gorgeous open plan living and meals that flows out seamlessly to the central courtyard for outdoor entertaining.

On trend kitchen with stunning joinery finished in the latest contemporary colours. Matt black tap ware and high-end Bosch appliances.



Theon Bruse
08 8431 8181



LOWER LIVING - 50m²

UPPER LIVING - 85m²

GARAGE - 37m²

ALFRESCO - 12m²

PORCH - 1m²

TOTAL - 185m²

