

36 Jeffcott Avenue LIGHTSVIEW SA

3 2 2

LIVE IN LIGHTSVIEW AND ENJOY THE LIFESTYLE. THIS IS AN AMAZING PART OF THE LIGHTSVIEW ESTATE. A QUIET SPOT SURROUNDED BY OTHER QUALITY HOMES. THIS HOME OFFERS LIFESTYLE THAT WILL PLEASE MANY.

Price : \$ 415,000

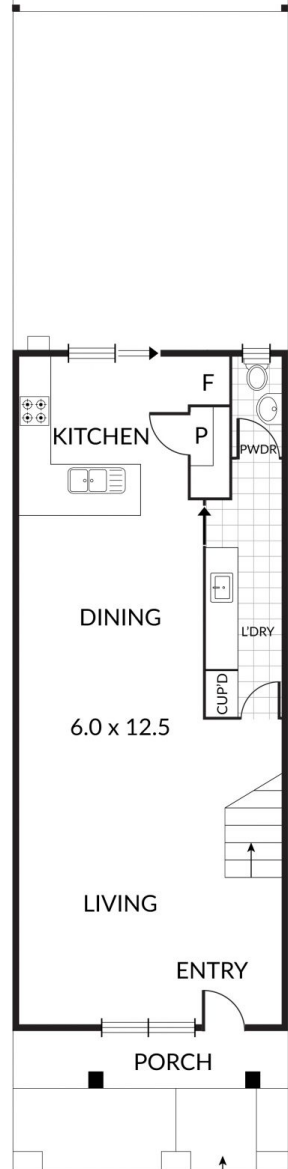
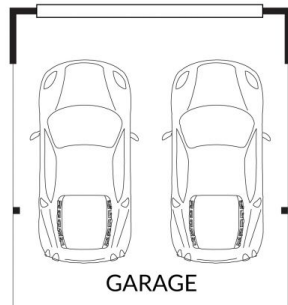
View : <https://www.bruse.com.au/sale/sa/north-north-east-suburbs/lightsview/residential/house/5551675>

The home is built to a high standard and offers excellent accommodation for lifestyle 2019 and 2020 and onwards.

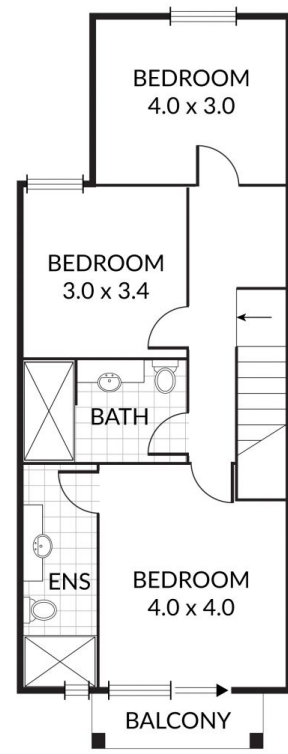
It just has instant appeal the moment that you walk in with decor concrete flooring that just has instant appeal. This open plan living, dining and kitchen is just spectacular, with high ceilings, views to the front garden, excellent kitchen with every amenity, built in pantry and also access through to an outdoor living area of generous proportions and further through to the double lock up garage facility from rear access laneway.



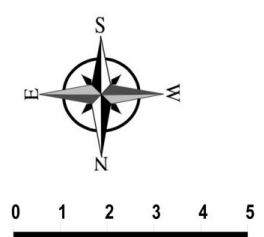
Bevan Bruse
08 8431 8181



GROUND FLOOR



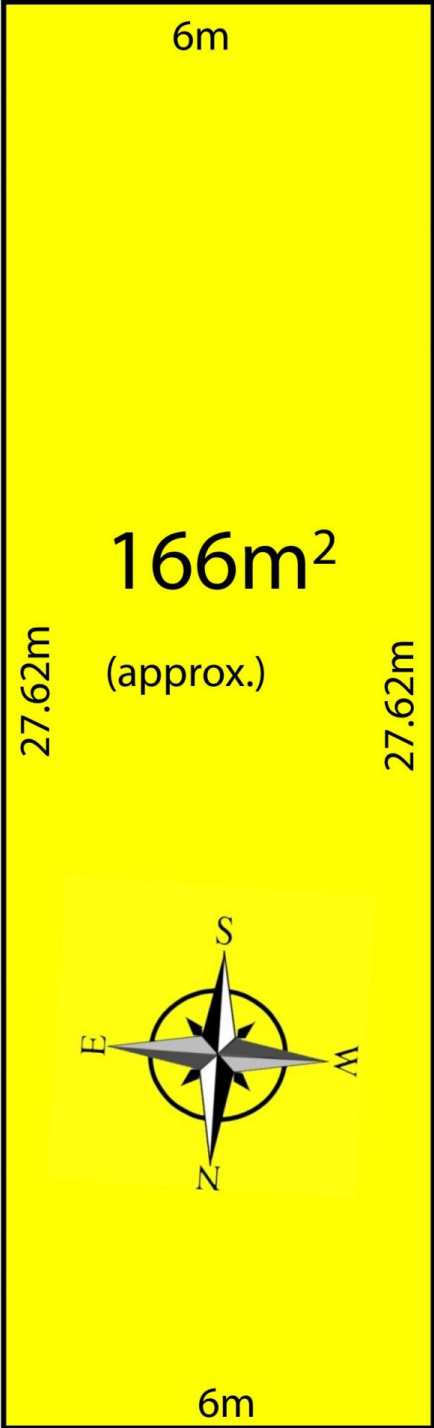
FIRST FLOOR



INTERNAL AREAS	116 M2
EXTERNAL AREAS	79 M2
TOTAL	195 M2

Scale in metres. Indicative only. Dimensions are approximate. All information contained herein is gathered from sources we believe to be reliable. However we cannot guarantee its accuracy and interested persons should rely on their own enquiries

BEADLE LANE



JEFFCOTT AVENUE