



**38 Beatty Street LINDEN PARK SA**

3 1 3

FOR DEFINITE AUCTION SATURDAY 17TH NOVEMBER.

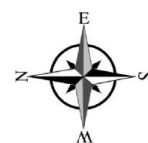
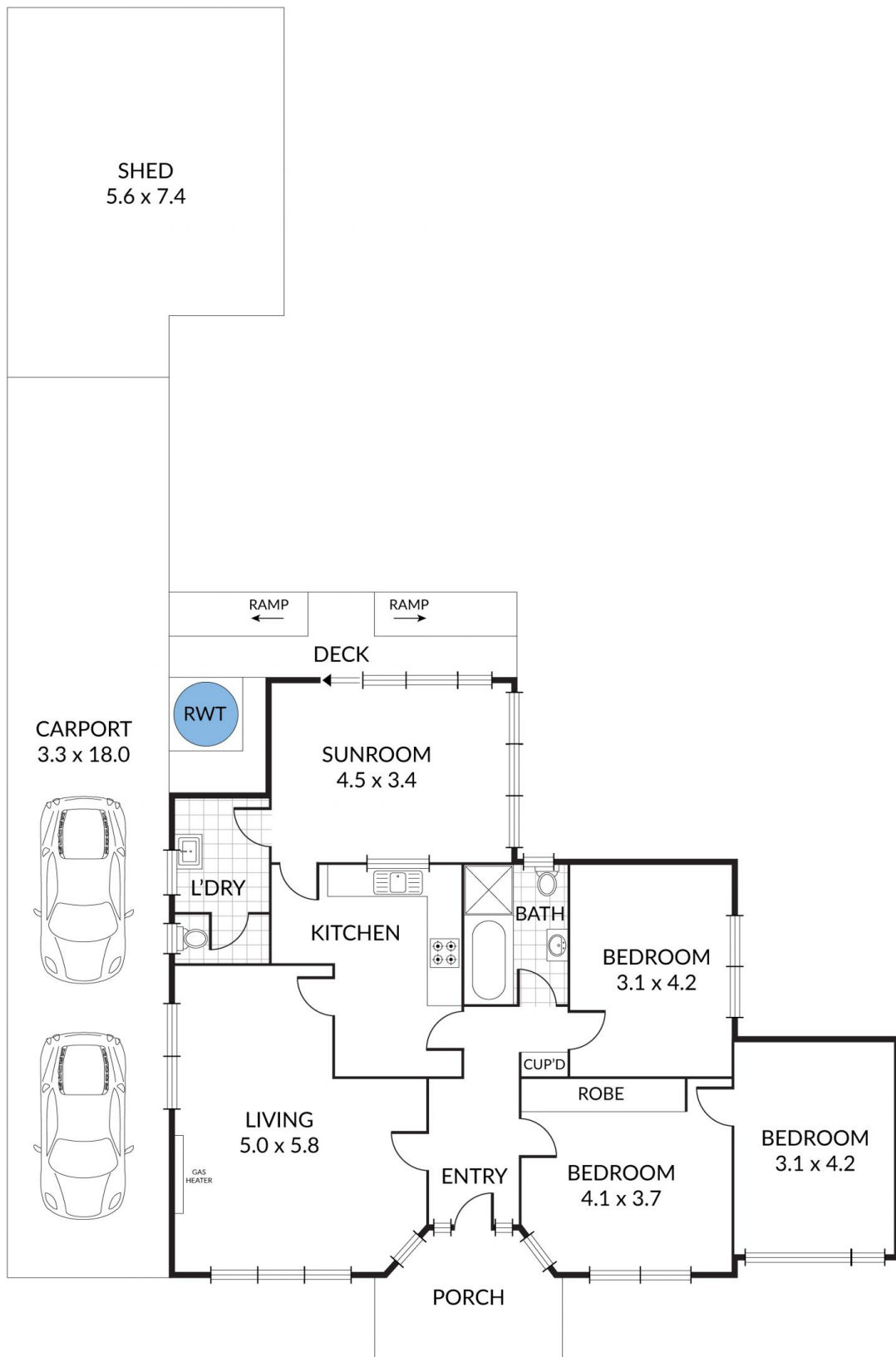
**Land Size** : 835 sqm  
**View** : <https://www.bruse.com.au/sale/sa/eastern-suburbs/linden-park/residential/house/5551679>

THIS IS A DEVELOPMENT SITE WITH SUBDIVISION POTENTIAL (STCC) OR A WONDERFUL ALLOTMENT OF LAND TO BUILD YOUR DREAM HOME ON OR LIVE IN AND ENJOY THE HOME AS IT IS. IT IS A HOME THAT OFFERS EXCELLENT ACCOMMODATION FOR FAMILY LIVING IN ONE OF THE MOST SOUGHT AFTER LOCATIONS AND THE EXCELLENT SCHOOL ZONINGS THAT THIS AREA OFFERS.

The home itself is a home with generous living areas. Excellent bedroom accommodation and with one bathroom. Surrounded by an attractive garden setting. A great place to live, possibly even until you build your home or rent the home out at this point in time until you have council



**Bevan Bruse**  
**08 8431 8181**



Scale in metres. Indicative only. Dimensions are approximate. All information contained herein is gathered from sources we believe to be reliable. However we cannot guarantee its accuracy and interested persons should rely on their own enquiries

18.28m

835m<sup>2</sup>

(approx.)

45.72m

45.72m



18.28m

**BEATTY STREET**