

**14 Morland Avenue STONYFELL SA**

4 2 2

A great opportunity for buyers looking for a solid neat and tidy home with many options to add value for the future.

Move into the home and enjoy it as it is.

Add value by doing an internal cosmetic renovation.

Develop the land and make the most of the huge 34m frontage and sought after position on the high side of the road. (STCC)

A wonderful family home in the highly popular Eastern Suburb of Stonyfell. Close to top private schools and public schools.

4 living rooms.

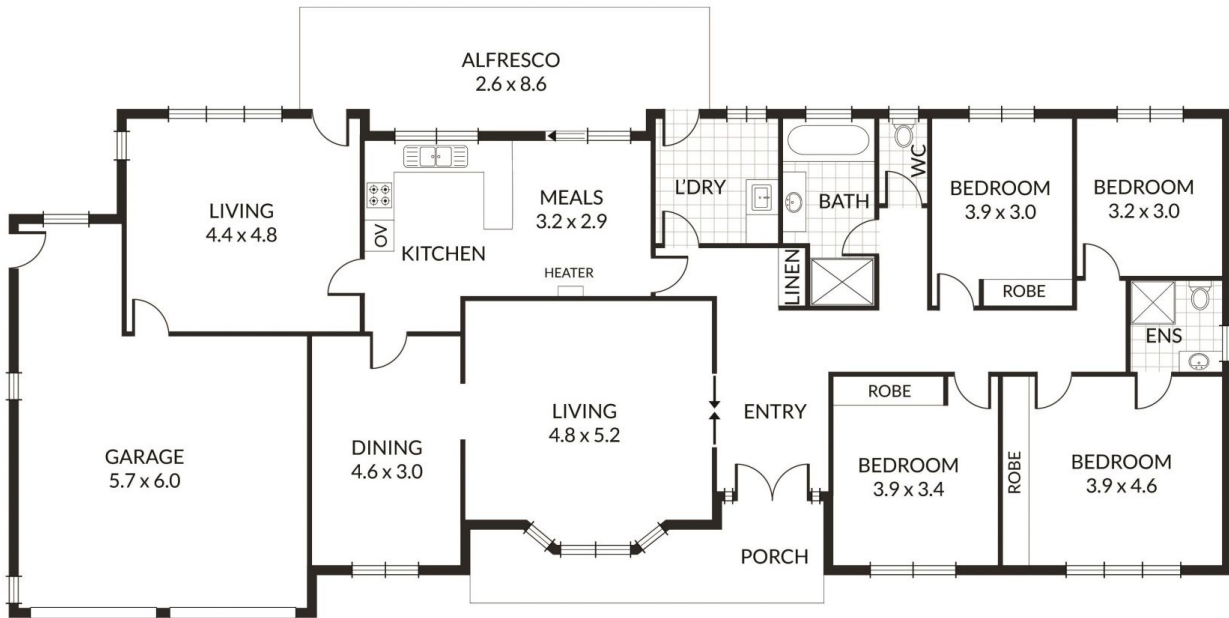
4 bedrooms.

**Land Size** : 1040 sqm

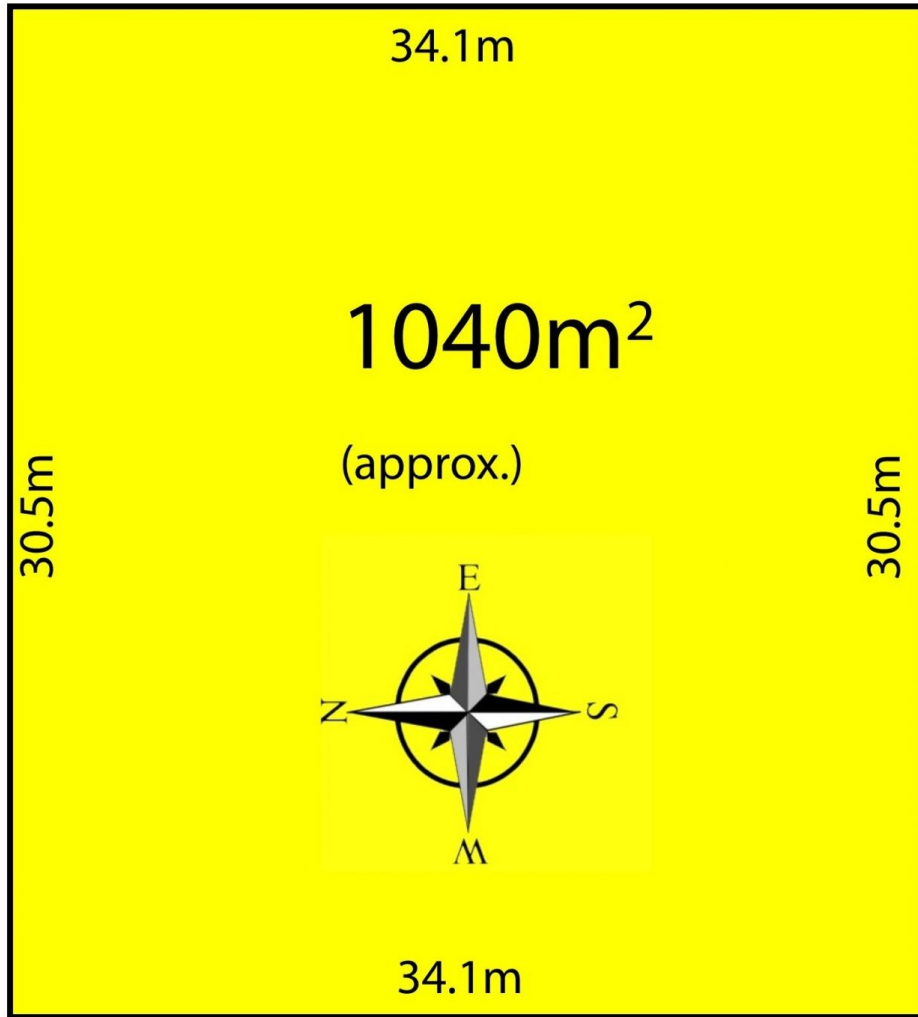
**View** : <https://www.bruse.com.au/sale/sa/eastern-suburbs/stonyfell/residential/house/5551690>



**Theon Bruse**  
**08 8431 8181**



Scale in metres. Indicative only. Dimensions are approximate. All information contained herein is gathered from sources we believe to be reliable. However we cannot guarantee its accuracy and interested persons should rely on their own enquiries.



**MORLAND AVENUE**