



**8 Shirley Avenue (Corner of Davies Avenue)  
TRANMERE SA**

**3** **1**

It is truly a development site that will be sought after due to its marvellous location in Tranmere.

**Land Size** : 840 sqm  
**View** : <https://www.bruse.com.au/sale/sa/eastern-suburbs/tranmere/residential/house/5551703>

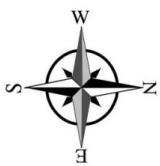
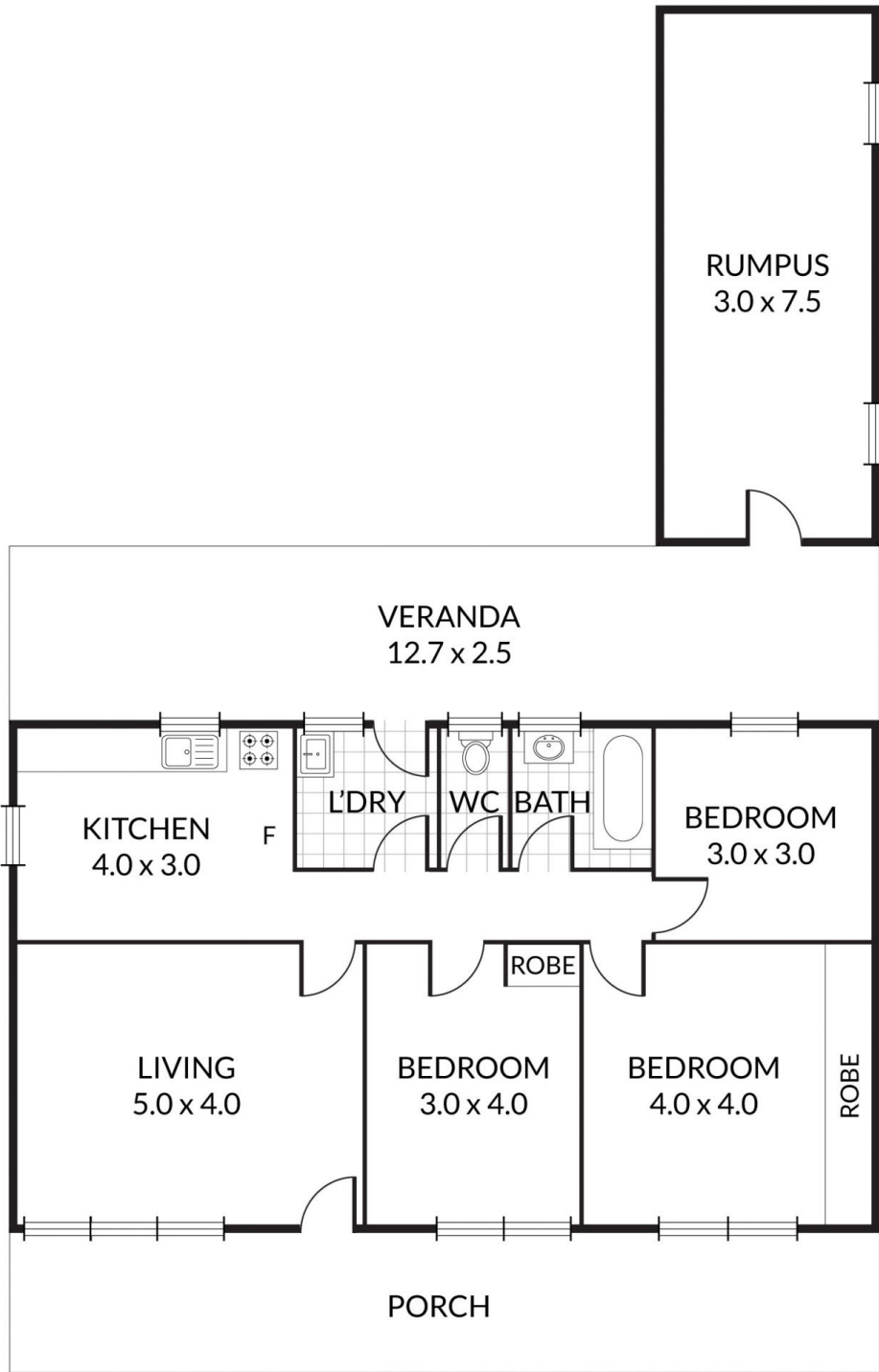
The home itself has been in the family for 65 years and they have now purchased a new home. The site and the home, whichever you wish to call it, is now available for sale now.



**Bevan Bruse**  
**08 8431 8181**

**THIS IS A BRILLIANT OPPORTUNITY TO PURCHASE AN AMAZING DEVELOPMENT SITE IN A SPECTACULAR LOCATION.**

Opportunities like this are a rare find. This home has 3 bedrooms, separate living room, kitchen, dining, bathroom, laundry and separate W/C.



Scale in metres. Indicative only. Dimensions are approximate. All information contained herein is gathered from sources we believe to be reliable. However we cannot guarantee its accuracy and interested persons should rely on their own enquiries