



19 Sheila Street ROSTREVOR SA

4 2 2

What a wonderful location to live and bring up your family. Only a short walk to the Leabrook Drive walking trail. Close to excellent schools. The gorgeous tree lined backdrop this house features is inspiring.

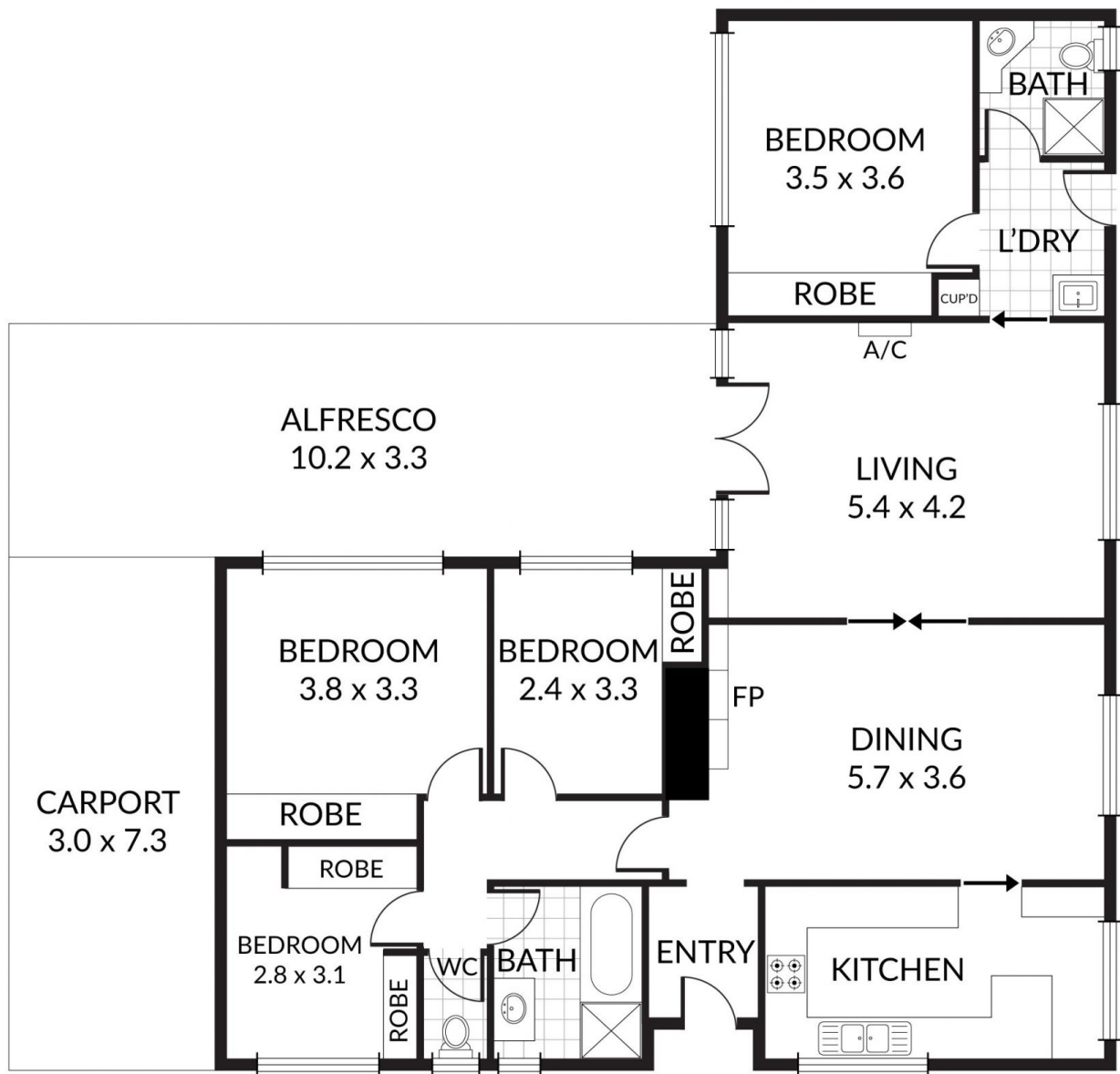
The home itself is quality built with solid brick and has been upgraded and maintained by the current owners for a loving lifetime.

With 2 generous living rooms there is space to move and divide between busy families and thanks to the extension there is now a main bedroom suite with ensuite bathroom to the rear of the home with a glorious private garden outlook. 4 bedrooms in total and a second bathroom and second separate toilet of which is rare in the character homes of today.

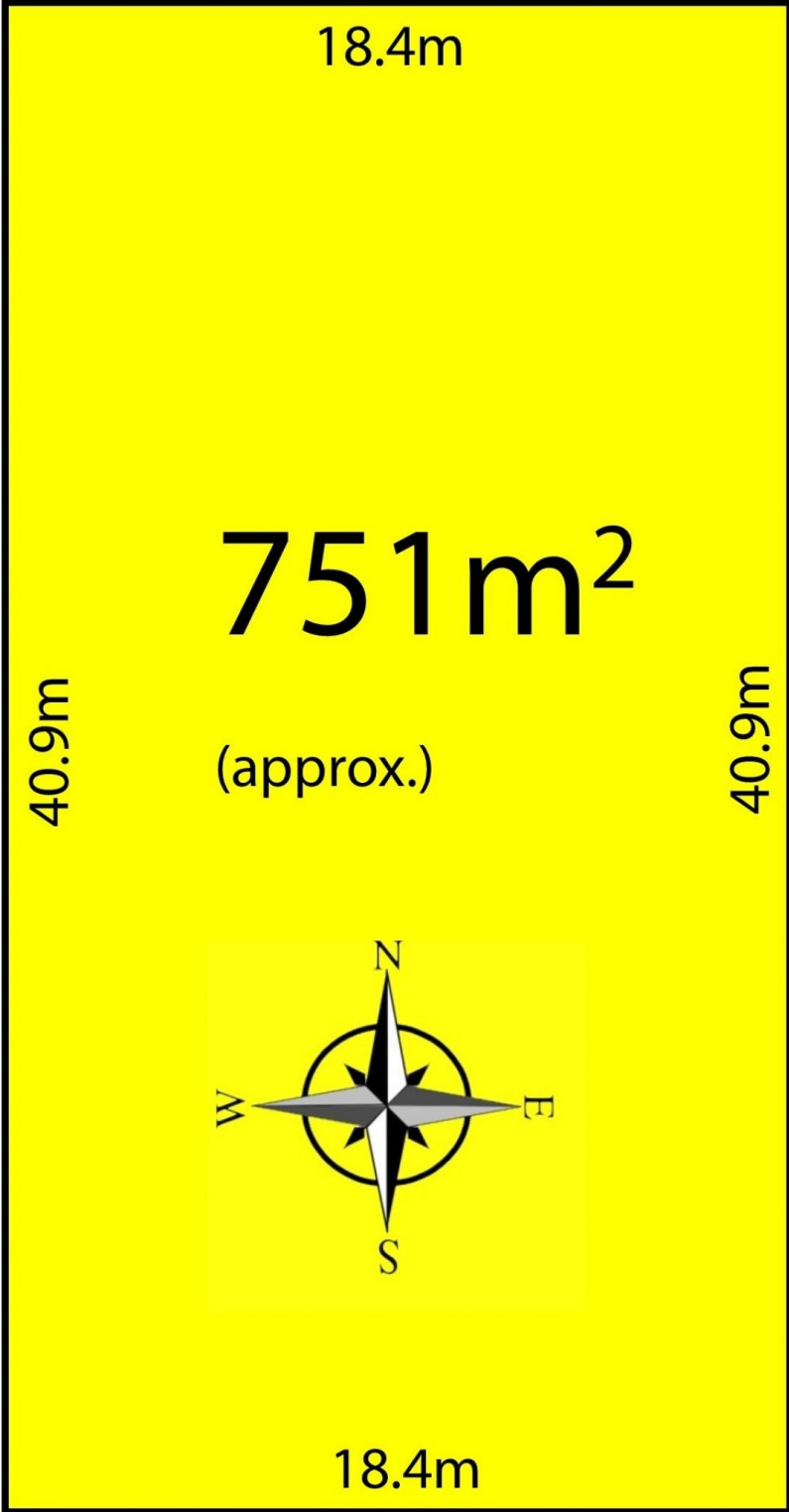
Price : \$ 610,000
Land Size : 751 sqm
View : <https://www.bruse.com.au/sale/sa/eastern-suburbs/rostrrevor/residential/house/5551725>



Theon Bruse
08 8431 8181



Scale in metres. Indicative only. Dimensions are approximate. All information contained herein is gathered from sources we believe to be reliable. However we cannot guarantee its accuracy and interested persons should rely on their own enquiries



SHEILA STREET