



56 Addison Avenue ATHELSTONE SA

4 2 2

The perfect family home.

IF YOU ARE LOOKING FOR A HOME TO ENJOY WITH YOUR FAMILY FOR MANY YEARS AND HAVE THE SPACE TO GROW INTO ... THEN YOU WILL BE IMPRESSED WITH THIS PROPERTY.

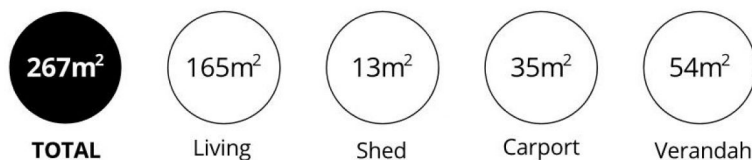
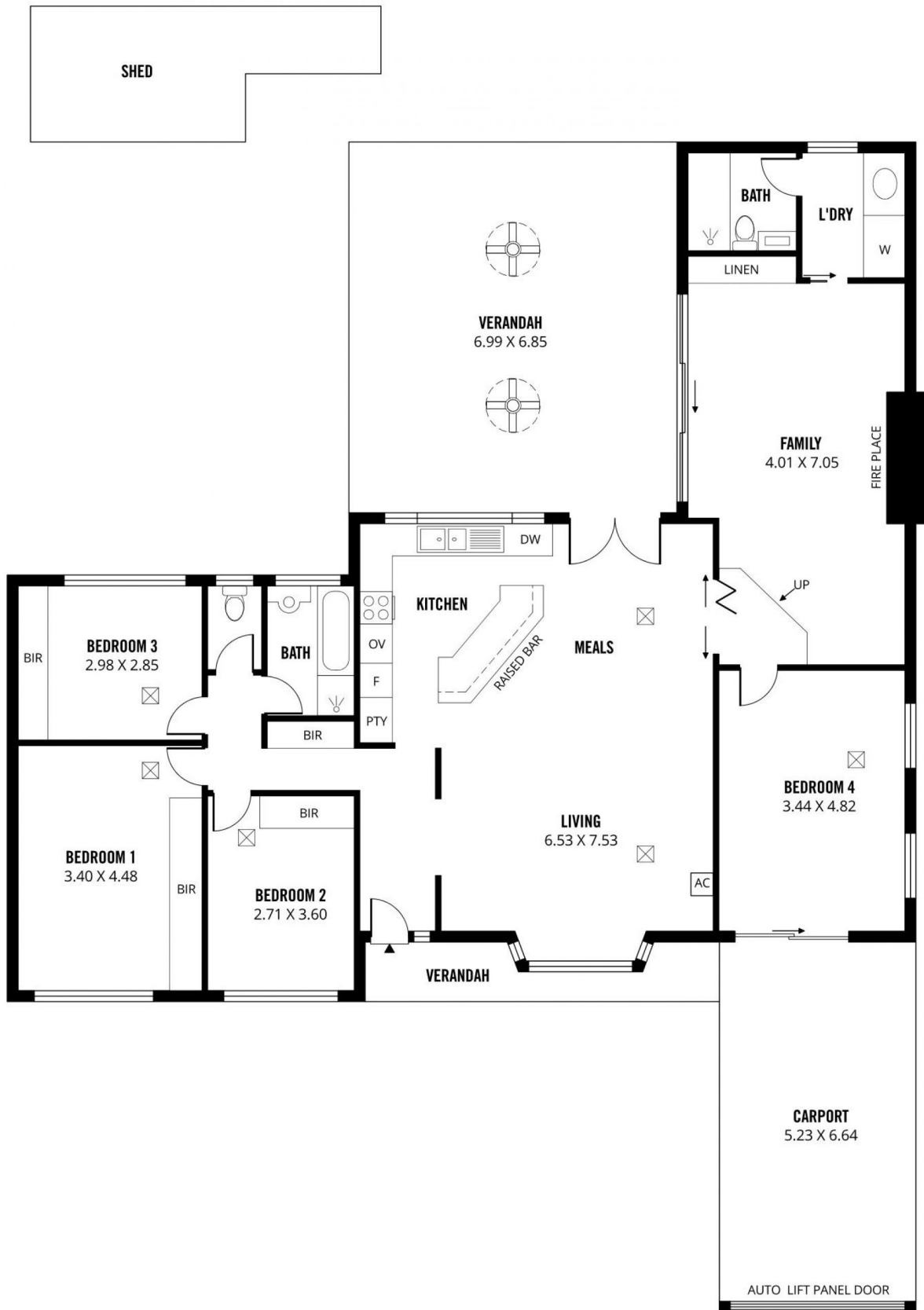
Set on a generous allotment with sprawling lawn areas and beautiful gardens and located in the family friendly location of Athelstone. Everyone who lives in Athelstone loves the peaceful lifestyle with the convenience of being only a short commute to the city. Enjoy the drive or take advantage of the upgraded OBahn transport link.

- Huge open plan everyday living and dining room.
- Stunning timber quality kitchen with an abundance of

Price : \$ 625,000
Land Size : 690 sqm
View : <https://www.bruse.com.au/sale/sa/north-north-east-suburbs/athelstone/residential/house/5551731>



Theon Bruse
08 8431 8181



Scale in metres. This drawing is for illustration purposes only. All measurements are approximate and details intended to be relied upon should be independently verified.

Produced by The Fotobase Group