



8A-8B Marybank Terrace ATHELSTONE SA

3  2  2 

Stylish single level home with 2 large living rooms, double garage in a peaceful location. Absolute top quality.

SPACIOUS NEW SINGLE LEVEL HOMES ARE BECOMING RARE AND THIS ONE HAS BEEN DESIGNED TO MAXIMISE NATURAL LIGHT AND A FREE FLOWING FLOORPLAN.

THE ATTENTION TO DETAIL IN THE FINISHES IS STUNNING. ALL THE LITTLE THINGS THAT COUNT HAVE BEEN PUT INTO THIS HOME.

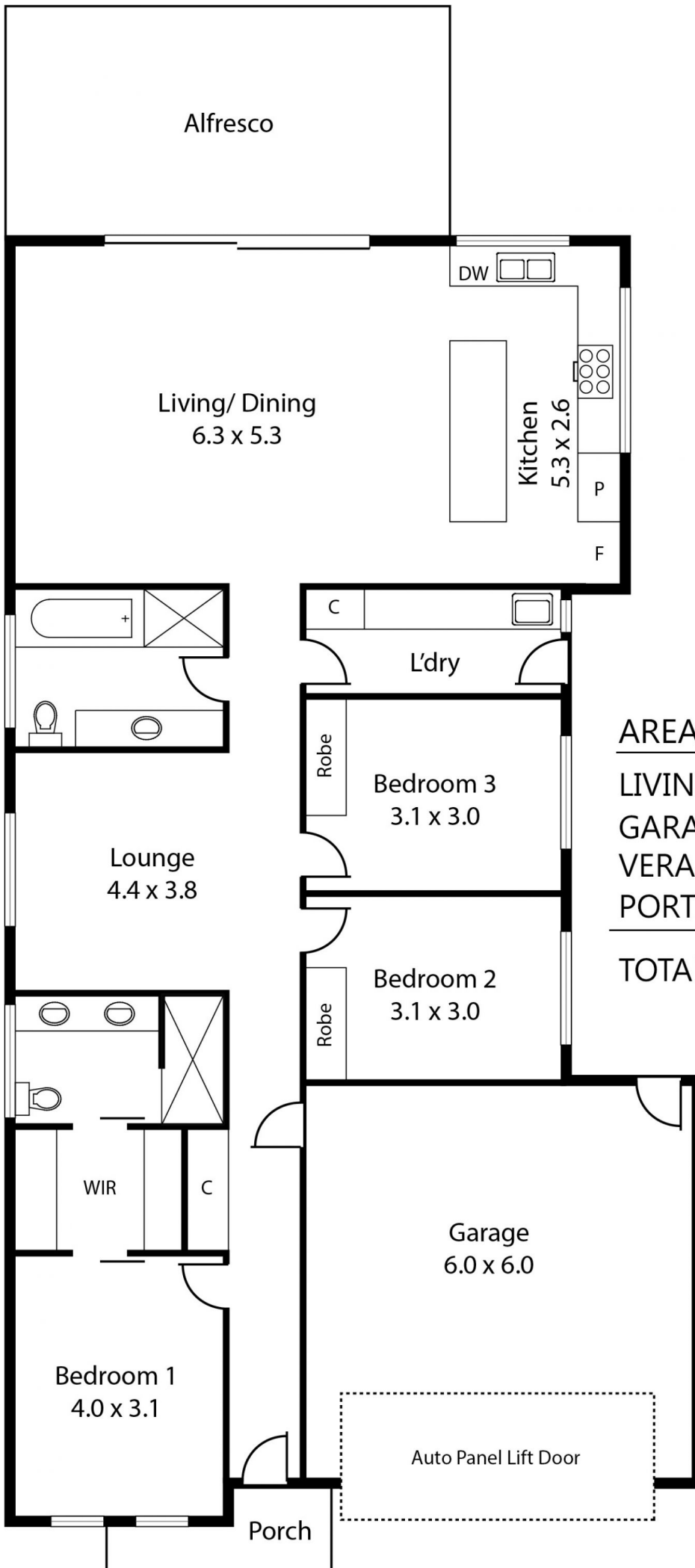
WE ARE EXCITED TO OFFER THIS AWESOME FAMILY HOME.

Free standing brand new Torrens Title home.

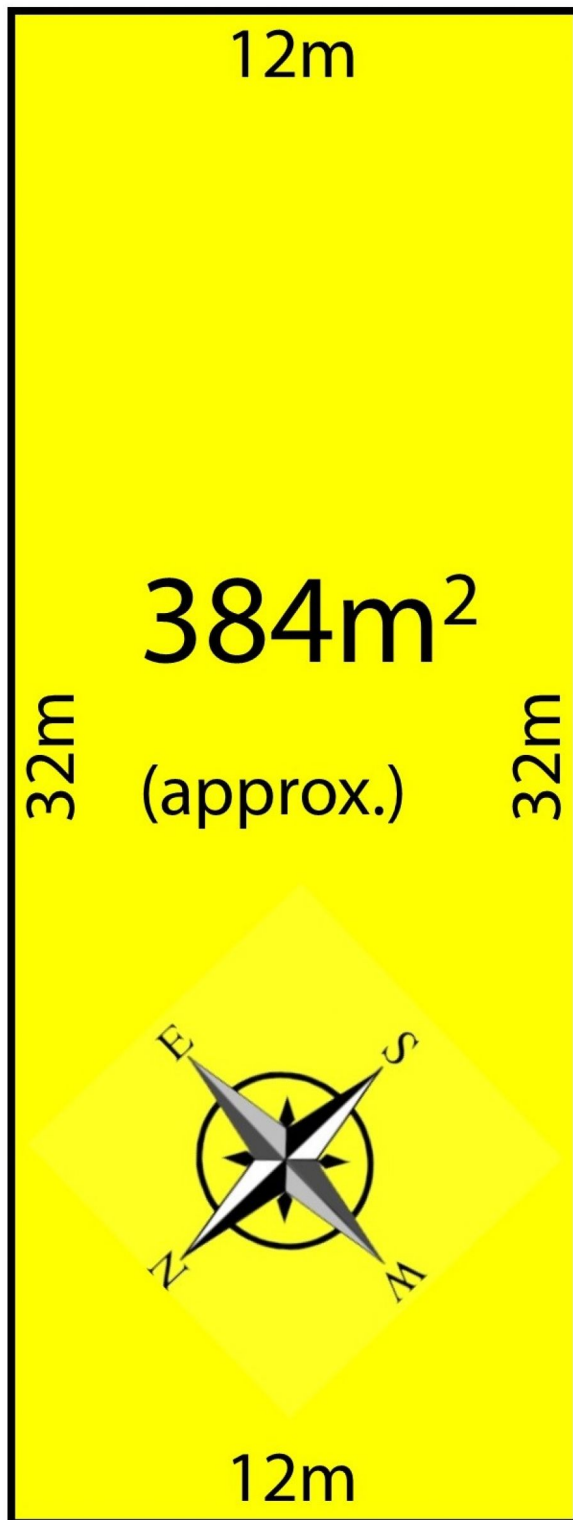
Price : \$ 640,000
Land Size : 384 sqm
View : <https://www.bruse.com.au/sale/sa/north-north-east-suburbs/athelstone/residential/house/5551736>



Theon Bruse
08 8431 8181



<u>AREAS(D2)</u>	<u>SQ.M.</u>
LIVING	157.69
GARAGE	40.13
VERANDAH	25.27
PORTICO	3.25
TOTAL	226.34



MARYBANK TERRACE