

## 22 Parkwood Grove MITCHELL PARK SA

3 1 6

Perfectly located in such a highly sort after location, this wonderful property offers an exciting opportunity for developers, investors and keen renovators looking to transform this solid brick house into a spacious family home.

This generous allotment of 702 sqm (approx.) (16.46 m frontage x 42.67 m depth) zoned R - Residential12 - Medium Density boasts huge subdivision potential for 2 new homes (STCC).

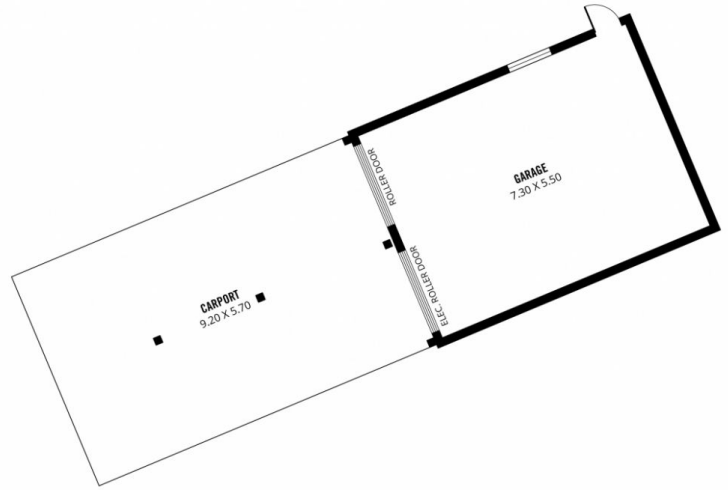
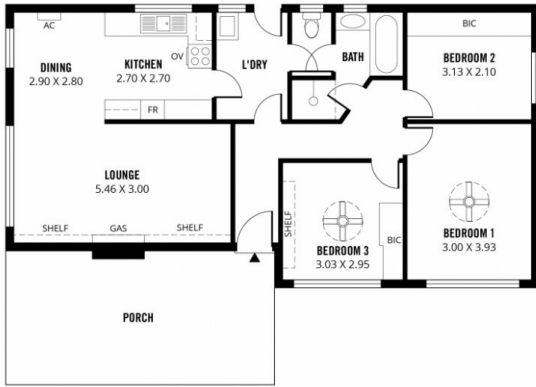
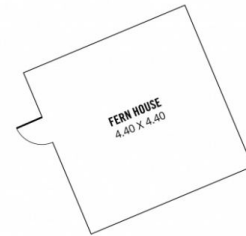
The location is excellent, close to shopping and dining at nearby Westfield Marion, a choice of schools, Flinders University and TAFE all close by and public transport easily accessible with both bus stops and the train station less than a few hundred metres away. The city is also only 15 minutes away.

**Land Size** : 702 sqm

**View** : <https://www.bruse.com.au/sale/sa/south-southern-east-suburbs/mitchell-park/residential/home/5551749>



**Toby Shipway**  
8413 8181



224m<sup>2</sup>

TOTAL

89m<sup>2</sup>

Living

19m<sup>2</sup>

Fern House

93m<sup>2</sup>

Garage/  
Carport

23m<sup>2</sup>

Porch



Scale in metres. This drawing is for illustration purposes only. All measurements are approximate and details intended to be relied upon should be independently verified.