



45B Flinders Drive VALLEY VIEW SA

4 🏠 3 🚗 2 🚗

2 LEVELS COMPRISING OF 4 BEDROOMS PLUS STUDY, 2 LIVING AREAS, 2 OUTDOOR ENTERTAINING AREAS, DIRECT ACCESS DOUBLE LOCK UP GARAGE AND STUNNING BALCONY VIEWS.

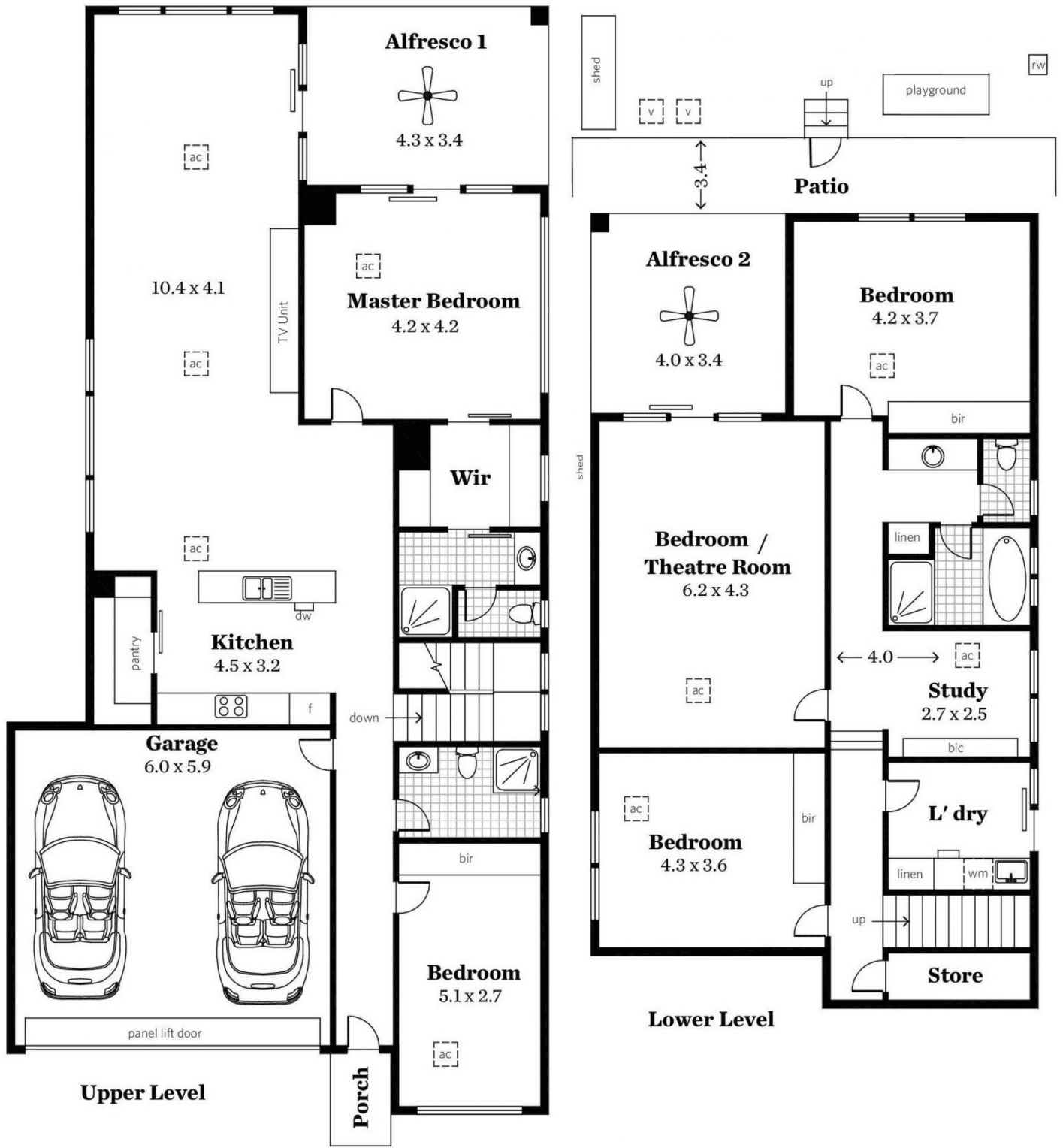
Land Size : 435 sqm
View : <https://www.bruse.com.au/sale/sa/north-north-east-suburbs/valley-view/residential/house/5551766>

This is your opportunity to purchase a home in the prodigious location of Valley View, where the suburb name says it all. With beautiful balcony views over the valley as well as the Adelaide hills, this is a great property offering a prestige living experience.

The upper level includes an impressive kitchen with generous size walk-in pantry, cupboard and island bench space, overlooking the stunning family living and dining area. A magnificent living space to relax in and enjoy the warmth of family lifestyle for many years to come.

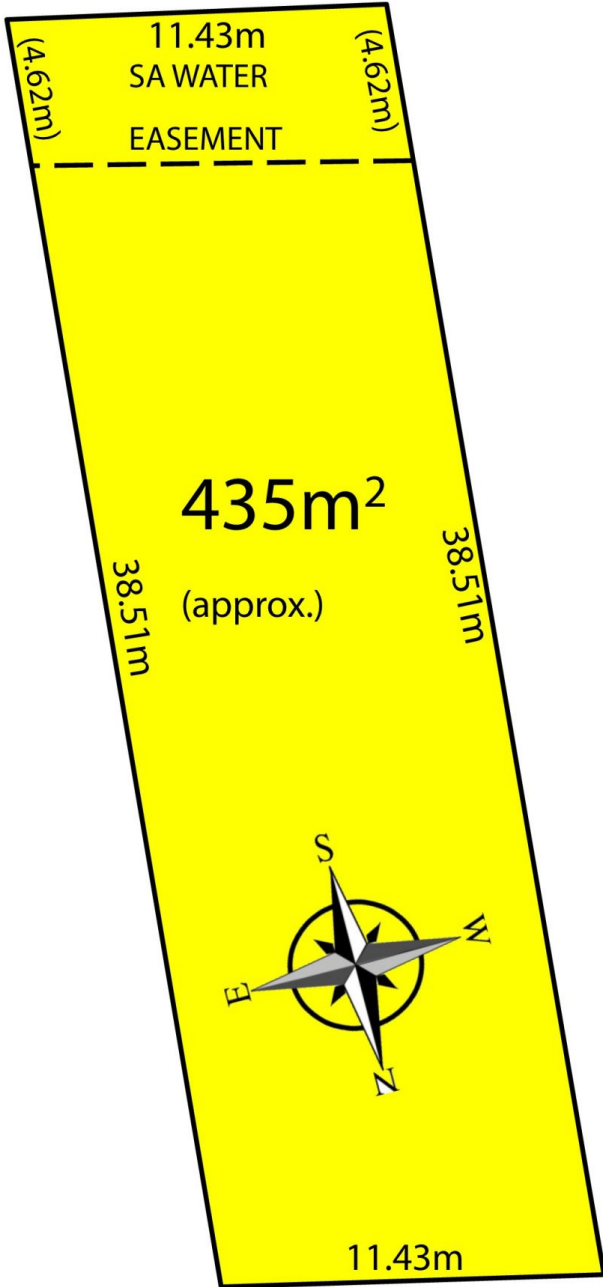


Bevan Bruse
08 8431 8181



Area (Estimate only)	
Lower Level	125.99 m ²
Upper Living	102.90 m ²
Garage	36.00 m ²
Patio	28.56 m ²
Alfresco 1	15.64 m ²
Alfresco 2	13.49 m ²
Porch	2.40 m ²
Total	324.98 m²

All information provided has been obtained from sources we believe to be accurate, however, we cannot guarantee the information is accurate and we accept no liability for any errors or omissions (including but not limited to a property's land size, floor plans and size, building age and condition). Interested parties should make their own inquiries and obtain their own legal advice. Ceiling heights are not included in total living.



FLINDERS DRIVE