

9B Grantham Grove PARADISE SA

3  2  1 

THIS IS A BRILLIANT OPPORTUNITY IN A MARVELLOUS LOCATION. ADJACENT TO A PARK. AN IDEAL HOME FOR FAMILY LIVING OR THOSE SEEKING A SINGLE LEVEL HOME IN THIS MARVELLOUS LOCATION.

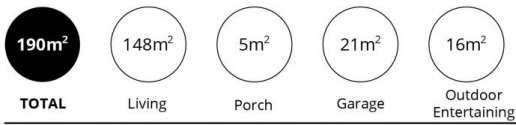
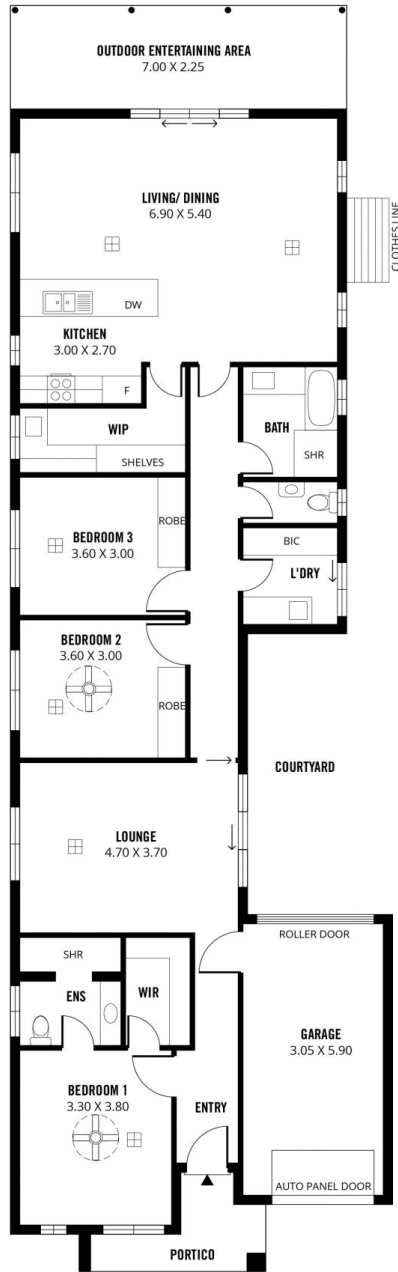
Don't miss out on this one. It is rare to purchase a single level home of this quality in a new home built in 2016. This property is an excellent floor plan, main bedroom with ensuite and walk in robe and further access through to other good sized bedrooms and very generous centrally located second living area with access to a courtyard.

The rear of the home is the hub of the home and it has a large living dining kitchen and the kitchen is absolutely stunning and includes a large butler's pantry with kitchen sink.

Price : \$ 560,000
Land Size : 348 sqm
View : <https://www.bruse.com.au/sale/sa/north-north-east-suburbs/paradise/residential/house/551768>

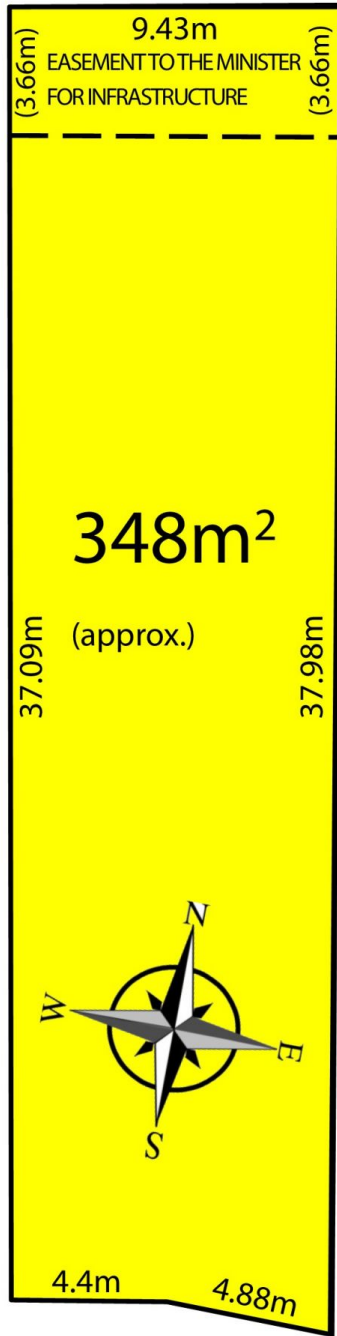


Bevan Bruse
08 8431 8181



Scale in metres. This drawing is for illustration purposes only. All measurements are approximate and details intended to be relied upon should be independently verified.

Produced by The Fotobase Group



GRANTHAM GROVE