

23/74-86 Marian Road PAYNEHAM SA

2 1 1

Positioned in a quiet group of homes, this spacious courtyard home offers a fantastic opportunity for 1st home buyers, investors and those looking to downsize.

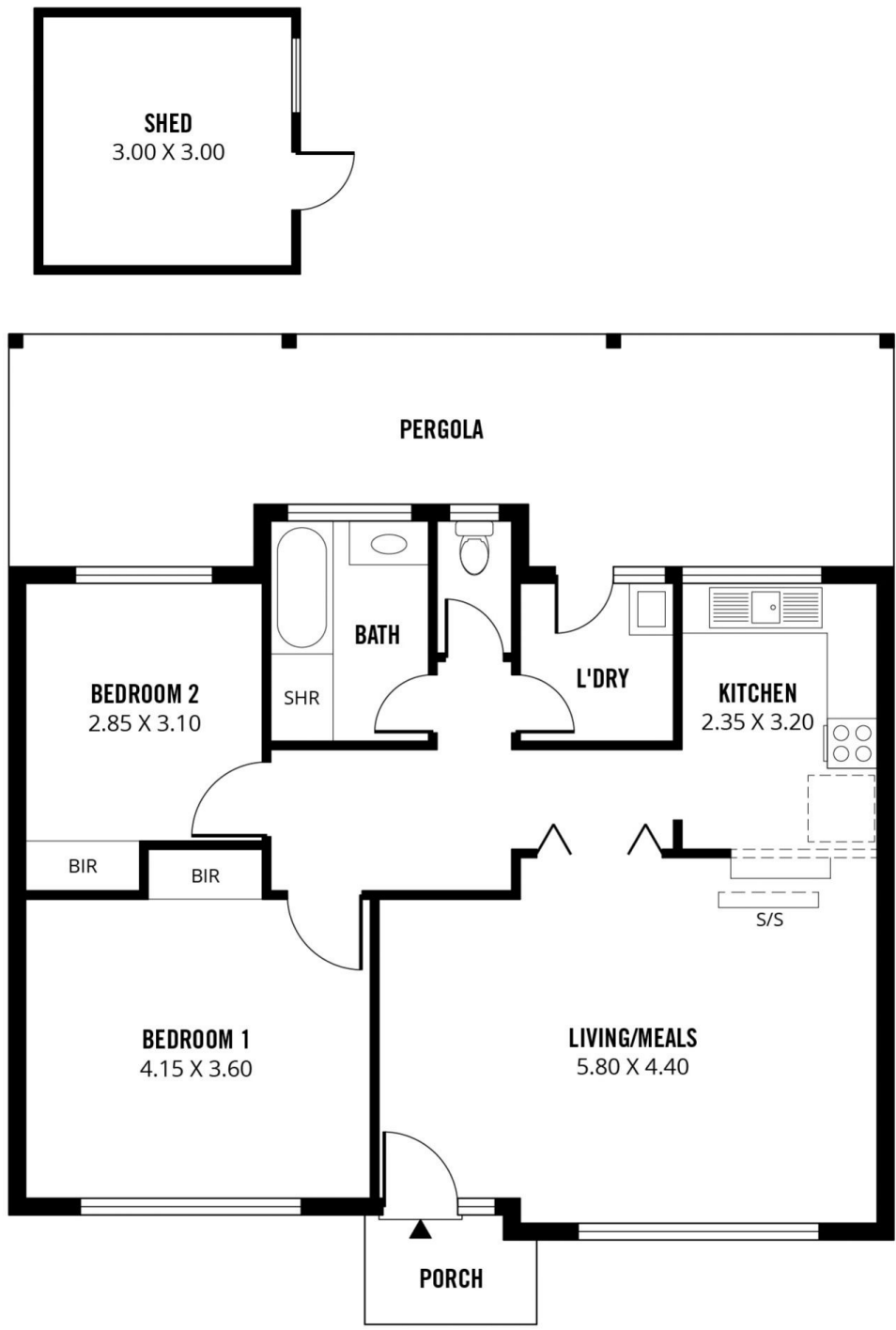
This highly sought-after location is just over 5km from the CBD with a choice of shopping nearby at Firle and Marden shopping precincts and public transport easily accessible. There is also a choice of excellent schooling close by with zoning for Trinity Gardens Primary School and Norwood Morialta High School.

Inside the home consists of very comfortable living with large open plan living and dining complimented with raked ceilings, exposed timber beams, revers cycle air conditioning, ceiling fan, feature exposed brick wall and a lovely outlook over the front gardens and streetscape. The kitchen is neat and tidy with ample cupboard and bench

Building Size : 14 sqm
Land Size : 178 sqm
View : <https://www.bruse.com.au/sale/sa/easter-n-suburbs/payneham/residential/unit/55-51773>



Toby Shipway
8413 8181



127m²

TOTAL

87m²

Living

10m²

Shed

27m²

Pergola

3m²

Porch

Scale in metres. This drawing is for illustration purposes only. All measurements are approximate and details intended to be relied upon should be independently verified.

Produced by **The Fotobase Group**