



22 Moorhouse Avenue MYRTLE BANK SA

3 1

THIS IS A BRILLIANT OPPORTUNITY IN A MARVELLOUS TREE LINED STREET CLOSE TO EVERY CONVENIENCE OF THE EASTERN SUBURBS. EXCELLENT SCHOOLING, EXCELLENT SHOPPING AND THIS PROPERTY HAS A NORTH FACING REAR ASPECT.

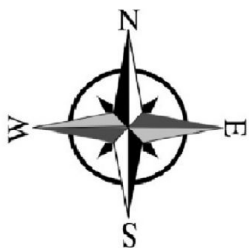
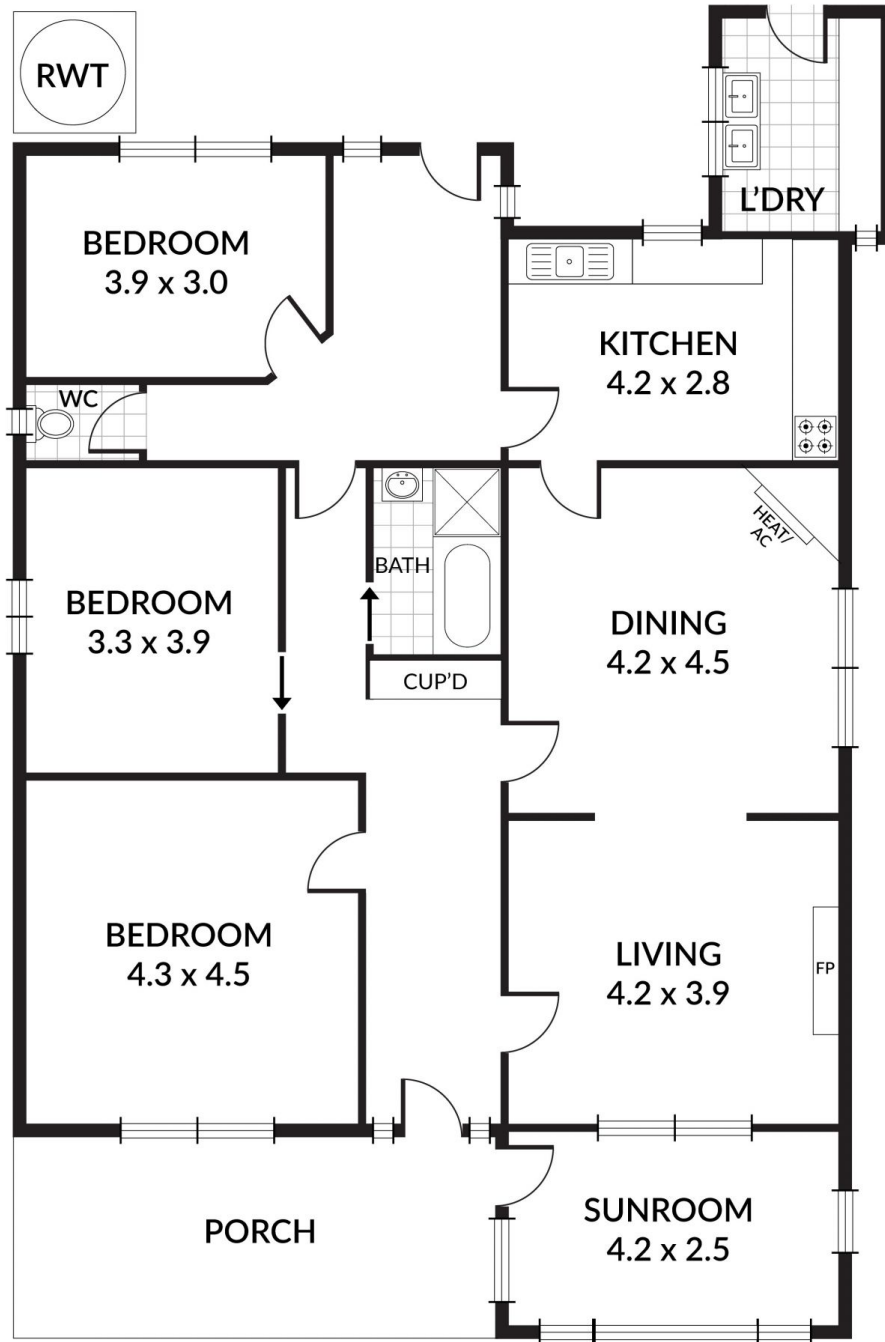
Land Size : 697 sqm
View : <https://www.bruse.com.au/sale/sa/eastern-suburbs/myrtle-bank/residential/house/5551776>

A character bungalow that has been in the family since the 1950's and has been well looked after and has a beautiful mature garden setting.

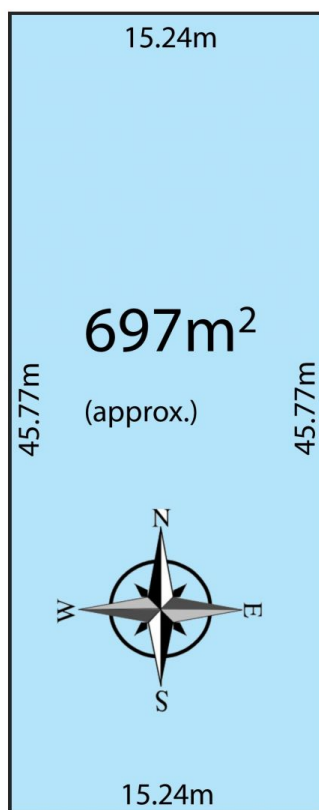


Bevan Bruse
08 8431 8181

The garden of this home is a feature of the sale of the residence however buyers will possibly buy this home and do renovations and restorations to the home to suit their own needs but it is a brilliant base to do it to. This character bungalow offers the opportunity that is a rare find in the marketplace today.



Scale in metres. Indicative only. Dimensions are approximate. All information contained herein is gathered from sources we believe to be reliable. However we cannot guarantee its accuracy and interested persons should rely on their own enquiries



MOORHOUSE AVENUE