

11B Jenkins Avenue ROSTREVOR SA

4 2 2

ONLY 11A LEFT.
11B NOW SOLD.

Set on beautiful Jenkins Avenue, one of Rostrevor's lovely tree lined streets. Only a short walk away at the end of the street is Morialta Nature Reserve and children's playground. Such a peaceful location to enjoy life.

The 2 homes are freshly completed and offer 2 designs to choose from. Both homes have been meticulously designed and are both extremely generous in size.
11A is 279m² in house size on 390m² of land.
11B is 267m² in house size on 390m² of land.

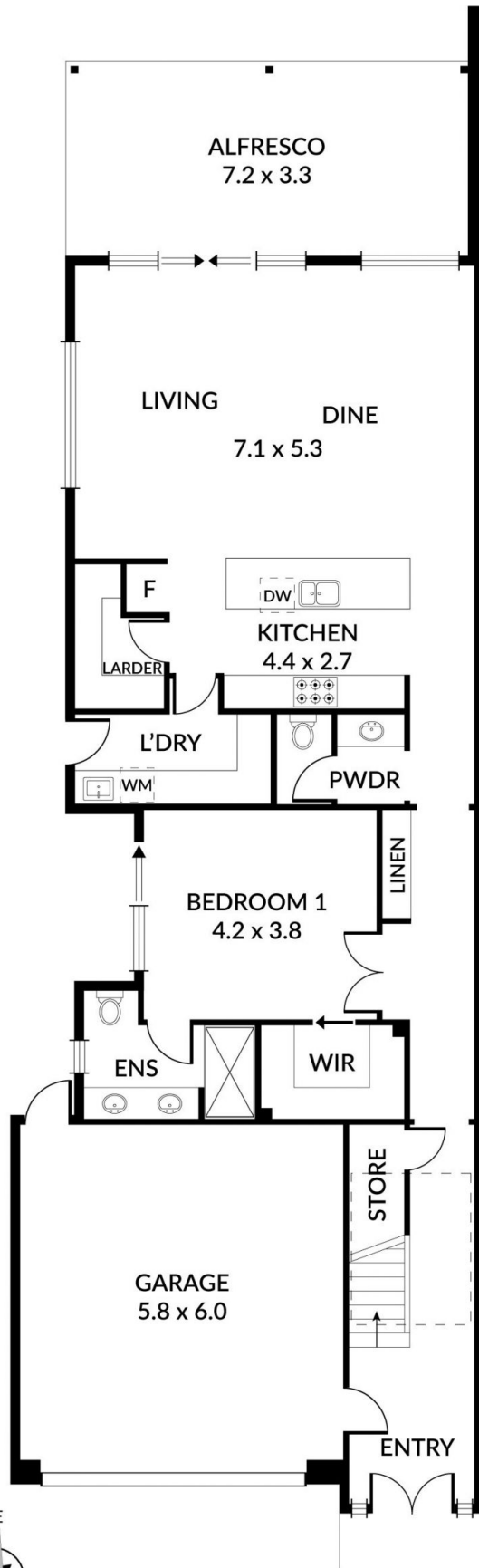
BOTH HOMES HAVE GOOD SIZE BACKYARDS.

The quality is superb! Built by Bert Farina Constructions.

Price : \$ 840,000
Land Size : 390 sqm
View : <https://www.bruse.com.au/sale/sa/eastern-suburbs/rostrrevor/residential/house/5551782>



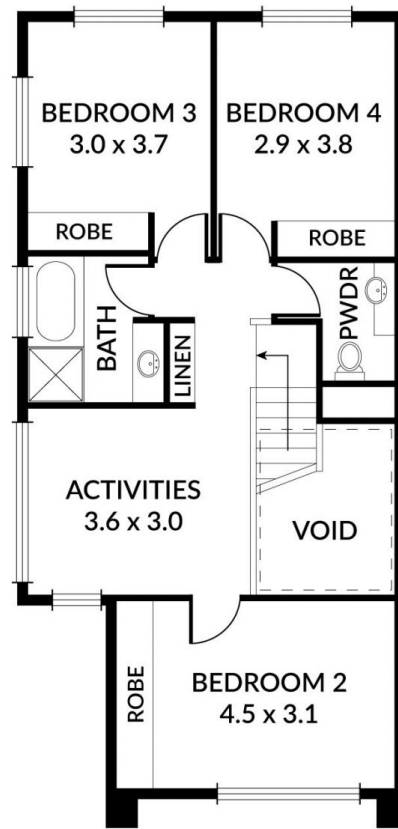
Theon Bruse
08 8431 8181



GROUND FLOOR



0 1 2 3 4 5

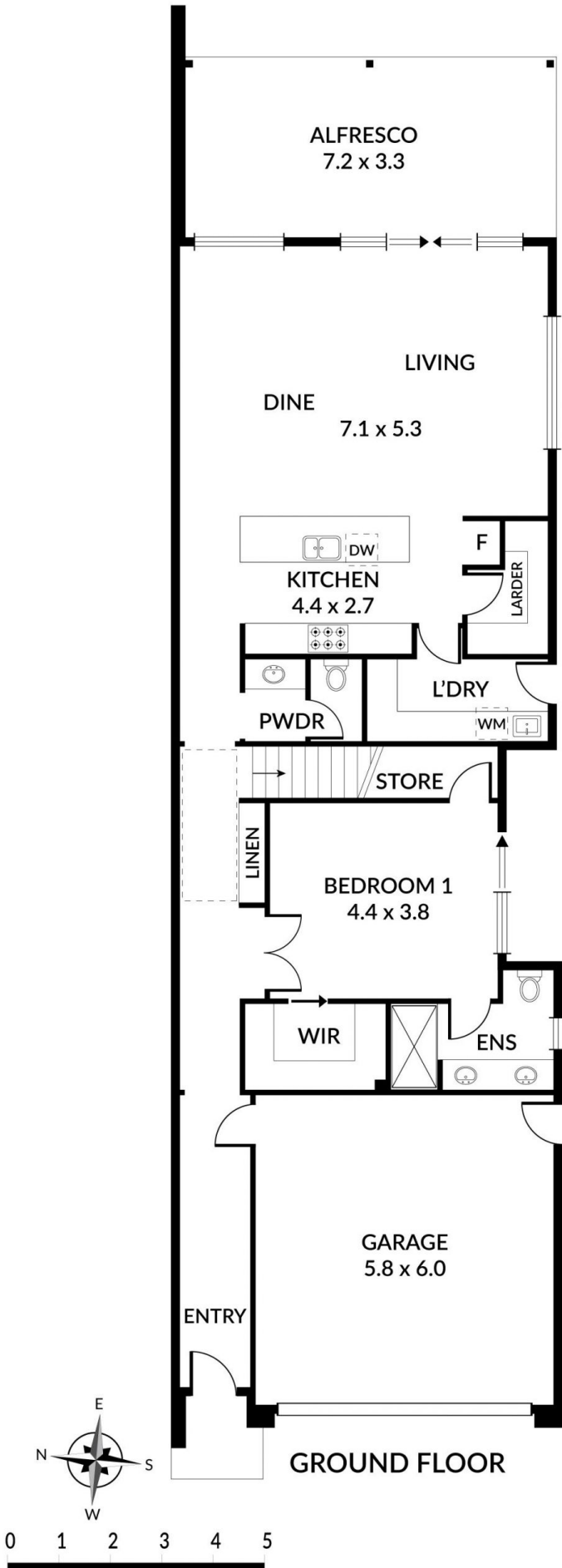


FIRST FLOOR

11B JENKINS AVENUE

MAIN LIVING:	130.50
UPPER FLOOR:	76.50
GARAGE:	39.50
ALFRESCO:	17.50
PORTICO:	3.00
TOTAL:	267.00

Scale in metres. Indicative only. Dimensions are approximate. All information contained herein is gathered from sources we believe to be reliable. However we cannot guarantee its accuracy and interested persons should rely on their own enquiries



11A JENKINS AVENUE

MAIN LIVING:	130.00
UPPER FLOOR:	87.00
GARAGE:	43.00
ALFRESCO:	17.50
PORTICO:	2.00
TOTAL:	279.50

Scale in metres. Indicative only. Dimensions are approximate. All information contained herein is gathered from sources we believe to be reliable. However we cannot guarantee its accuracy and interested persons should rely on their own enquiries