

24 Chatsworth Grove TOORAK GARDENS SA

2 1 1

This brilliant upper level apartment style home unit is extremely large and is positioned in Lloyd Street and overlooking the wonderful gardens and tree-lined street.

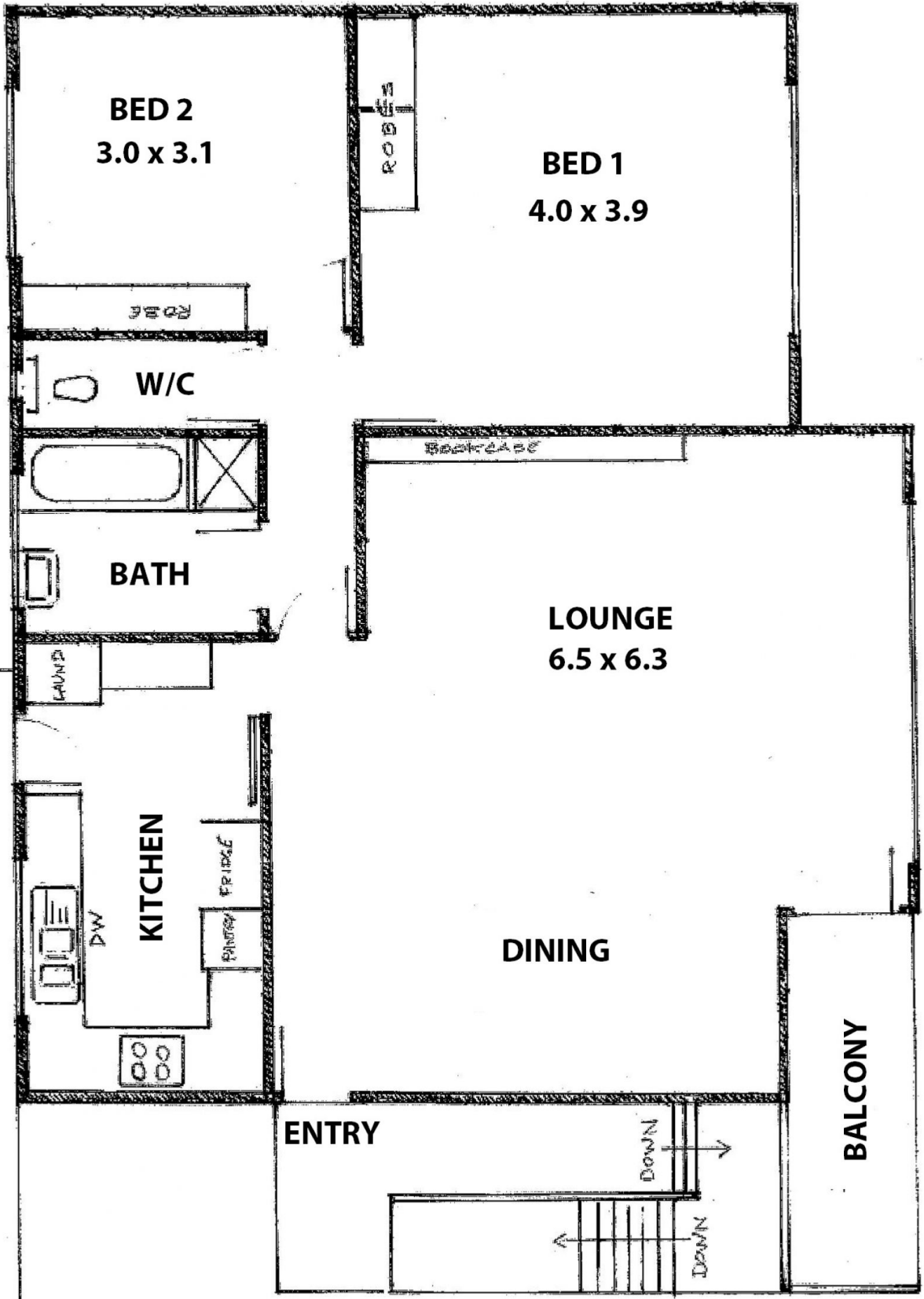
View : <https://www.bruse.com.au/sale/sa/eastern-suburbs/toorak-gardens/residential/unit/5551783>

THE LIVING AREA AND BEDROOMS OF THIS VERY DESIRABLE HOME UNIT ARE EXTREMELY LARGE. THE UNIT HAS A PRIVATE ENTRY FROM THE GROUND FLOOR TO TWO UNITS ON THE UPPER LEVEL. NUMBER 6 IS AN END UNIT AND OFFERS THE OPPORTUNITY FOR BUYERS TO BUY SOMETHING THAT IS RATHER UNIQUE AS ITS SIZE IS REALLY EXTREME.



Bevan Bruse
08 8431 8181

One of the benefits of living in wonderful Toorak Gardens is you are close to good schooling, good shopping, good transport and really just a hop, step and two jumps to the city centre.



BED 2
3.0 x 3.1

BED 1
4.0 x 3.9

W/C

BATH

LOUNGE
6.5 x 6.3

KITCHEN

DINING

ENTRY 2

REAR BALCONY

ENTRY

BALCONY

ROBE

ROBE

BOOKCASE

LAUNDRY

DW

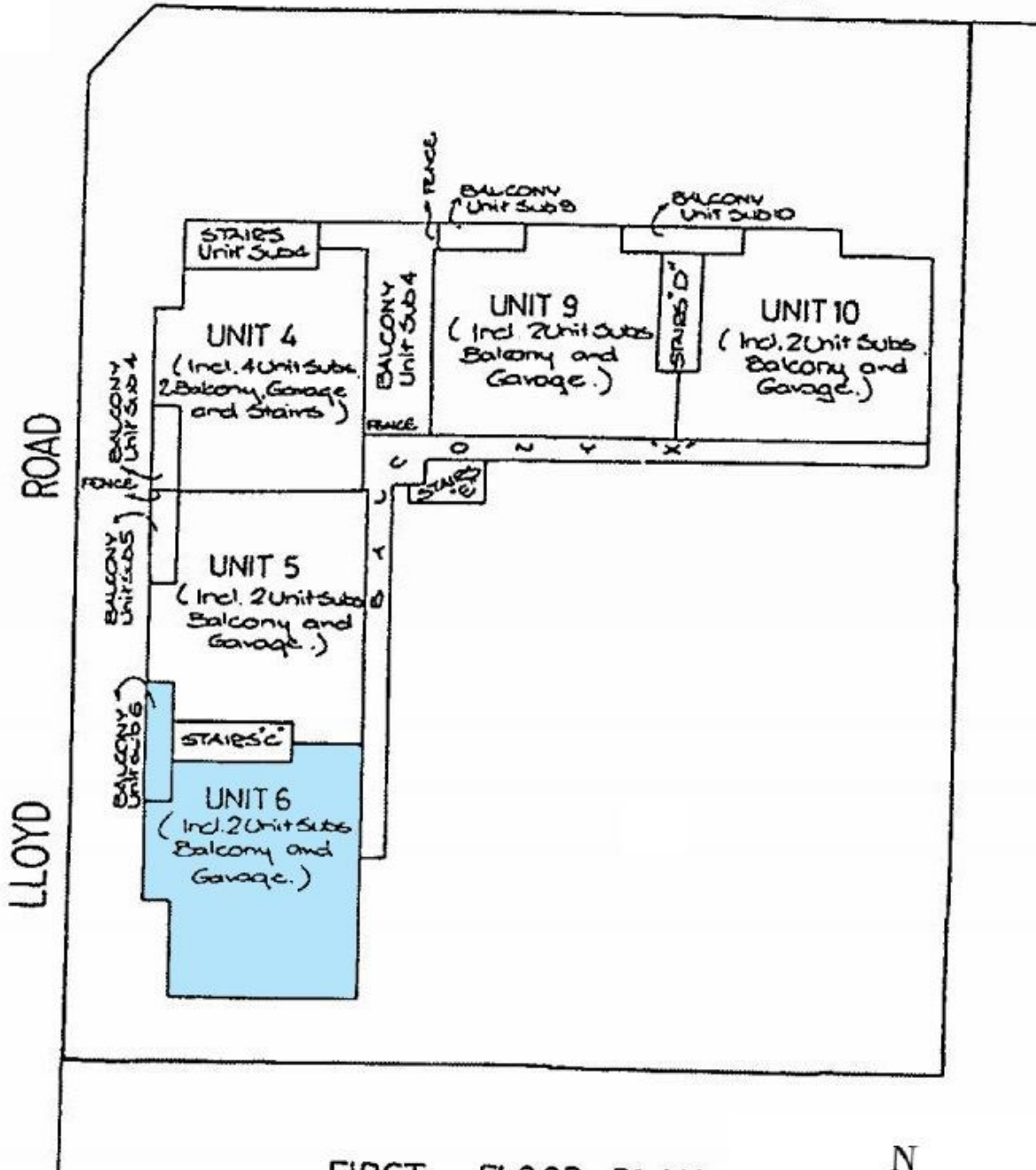
FRIDGE

DOWN

DOWN

CHATSWORTH

GROVE



FIRST FLOOR PLAN

