

**76 Dashwood Road Beaumont SA**

3 1 2

WE ARE OPEN FOR BUSINESS.  
PLEASE CALL US FOR A VIEWING APPOINTMENT FOR THIS HOME. DUE TO GOVERNMENT REGULATION WE ARE CONDUCTING PRIVATE VIEWINGS FOR ONE BUYER GROUP AT A TIME.

**Price** : \$ 1,000,000  
**Land Size** : 1066 sqm  
**View** : <https://www.bruse.com.au/sale/sa/eastern-suburbs/beaumont/residential/house/5551785>

Sunset vistas ... what an awesome location.  
Corner of Bayview Crescent & Dashwood Road.

Inspirational views over the city and beyond.

ELEVATED CORNER ALLOTMENT OF 1066M2. RARE EARTH INDEED!

ENJOY THE SPACIOUS CONTEMPORARY HOME AS IT IS.

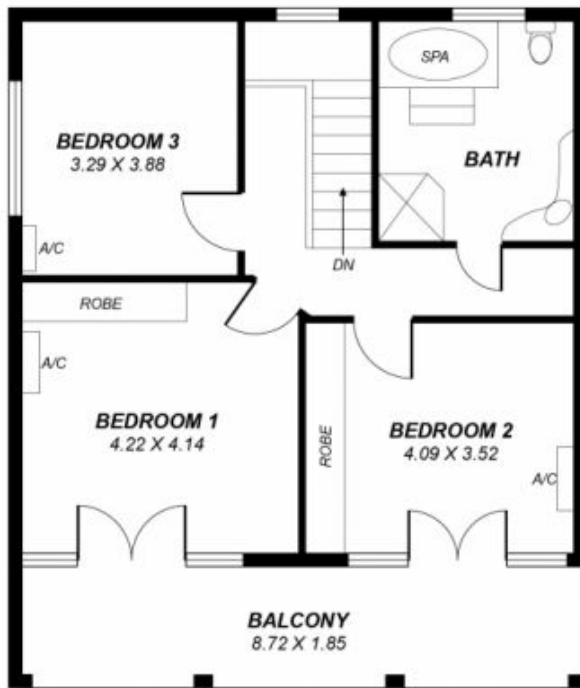
Formal sitting & dining room.



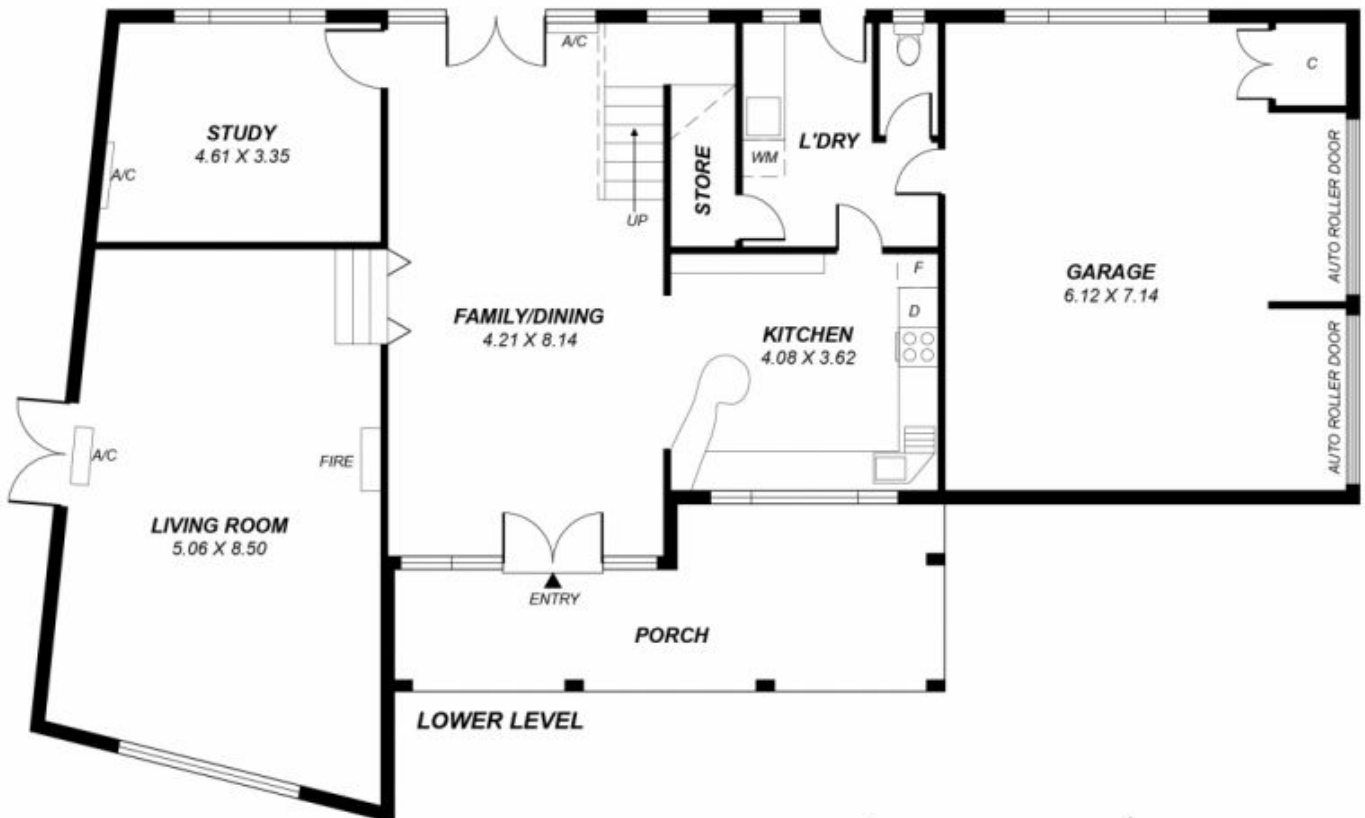
**Theon Bruse**  
08 8431 8181



**Bevan Bruse**  
08 8431 8181



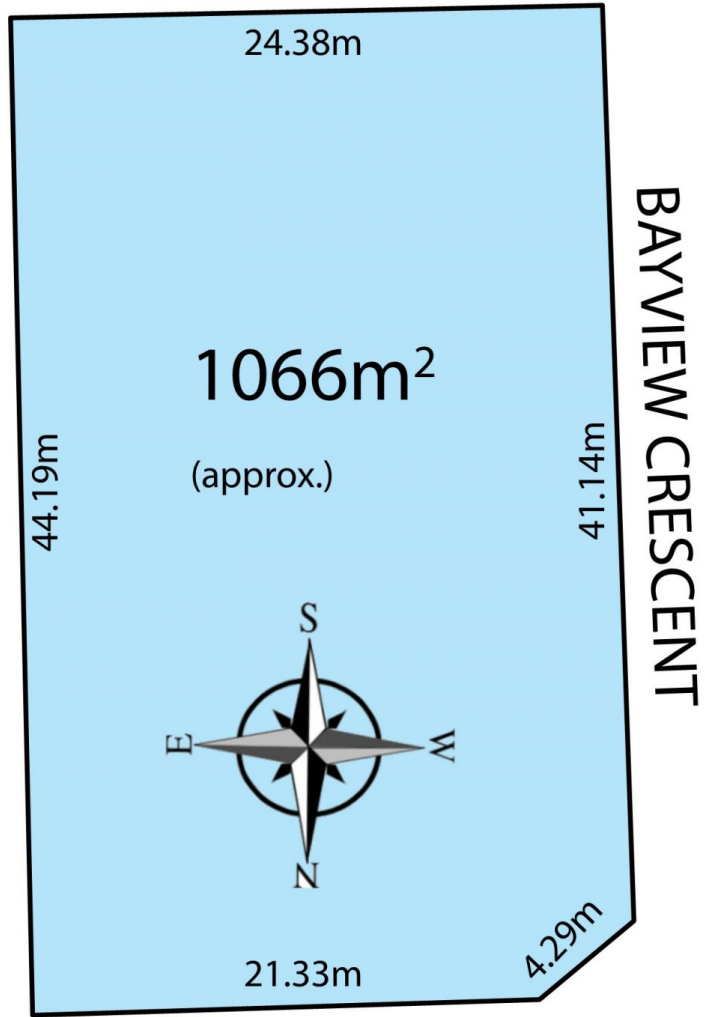
**UPPER LEVEL**



**LOWER LEVEL**

*This drawing is for illustration purposes only.  
All measurements are approximate and details intended  
to be relied upon should be independently verified.*

Area	m <sup>2</sup>
Lower Living	75.06
Upper Living	126.03
Garage	47.65
Balcony	16.30
Porch	19.68
<b>Total</b>	<b>284.72</b>



DASHWOOD ROAD